



Published on Wednesday, August 31, 2011, 8:15 A.M. ET

August 2011 ADP National Employment Report®

Employment in the U.S. nonfarm private business sector rose 91,000 from July to August on a seasonally adjusted basis, according to the latest [ADP National Employment Report](#)® released today. The estimated advance in employment from June to July was revised down modestly to 109,000, from the initially reported 114,000.

Today's *ADP National Employment Report* suggests that the trend in employment moderated somewhat in August at a pace below what would be consistent with a stable unemployment rate.

Employment in the service-providing sector rose by 80,000 in August, marking 20 consecutive months of employment gains. Employment in the goods-producing sector rose by 11,000 in August, up from a loss of 2,000 jobs last month. Manufacturing employment slipped 4,000 in August.

Employment on small payrolls (up to 49 workers) rose 58,000 in August, almost equal to that of last month. Employment on medium payrolls (50 to 499 workers) rose 30,000, while employment on large payrolls (500 or more workers) created only 3,000 jobs.*

Employment in the construction industry rose 7,000 in August, following three consecutive monthly declines, bringing the total decrease in construction employment since its peak in January 2007 to 2,128,000. Employment in the financial services sector remained essentially unchanged in August. The total decrease in financial services employment for the same period remains 687,000.

For information on the construction sector and use of the *ADP Report*, please visit the methodology section of the *ADP National Employment Report* website at <http://ADPemploymentreport.com/methodology.aspx>.

* All size data included in the *ADP National Employment Report* is based on size of payroll. In some cases, small and medium-size payrolls belong to businesses employing more workers than indicated by the size grouping.

DERIVED FROM ADP PAYROLL DATA

Table 1. Employees on nonfarm private payrolls by selected industry sector and size*
(In thousands)

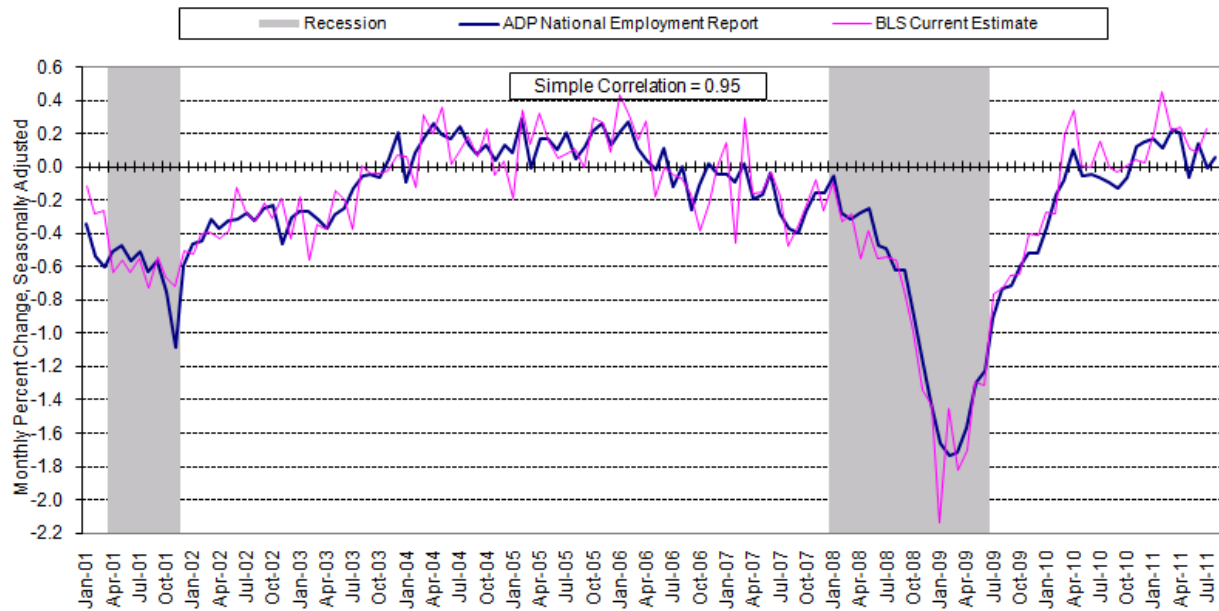
Industry / Size of Payroll	Seasonally Adjusted						Change from: Jul.2011 - Aug.2011p
	Mar. 2011	Apr. 2011	May 2011	Jun. 2011	Jul. 2011p	Aug. 2011p	
Total nonfarm private.....	108,291	108,470	108,505	108,649	108,758	108,849	91
Small (1-49).....	49,018	49,102	49,129	49,208	49,267	49,325	58
Medium (50-499).....	41,818	41,902	41,931	41,989	42,030	42,060	30
Large (> 499).....	17,455	17,466	17,445	17,452	17,461	17,464	3
Goods-producing.....	17,778	17,815	17,804	17,829	17,827	17,838	11
Small (1-49).....	6,620	6,633	6,633	6,644	6,646	6,655	9
Medium (50-499).....	7,725	7,750	7,757	7,767	7,764	7,767	3
Large (> 499).....	3,433	3,432	3,414	3,418	3,417	3,416	-1
Service-providing.....	90,513	90,655	90,701	90,820	90,931	91,011	80
Small (1-49).....	42,398	42,469	42,496	42,564	42,621	42,670	49
Medium (50-499).....	34,093	34,152	34,174	34,222	34,266	34,293	27
Large (> 499).....	14,022	14,034	14,031	14,034	14,044	14,048	4
Addendum:							
Manufacturing.....	11,642	11,662	11,652	11,674	11,672	11,668	-4

p = preliminary; subject to revision

* All size data included in the ADP National Employment Report is based on size of payroll. In some cases, small and medium-size payrolls belong to businesses employing more workers than indicated by the size grouping.

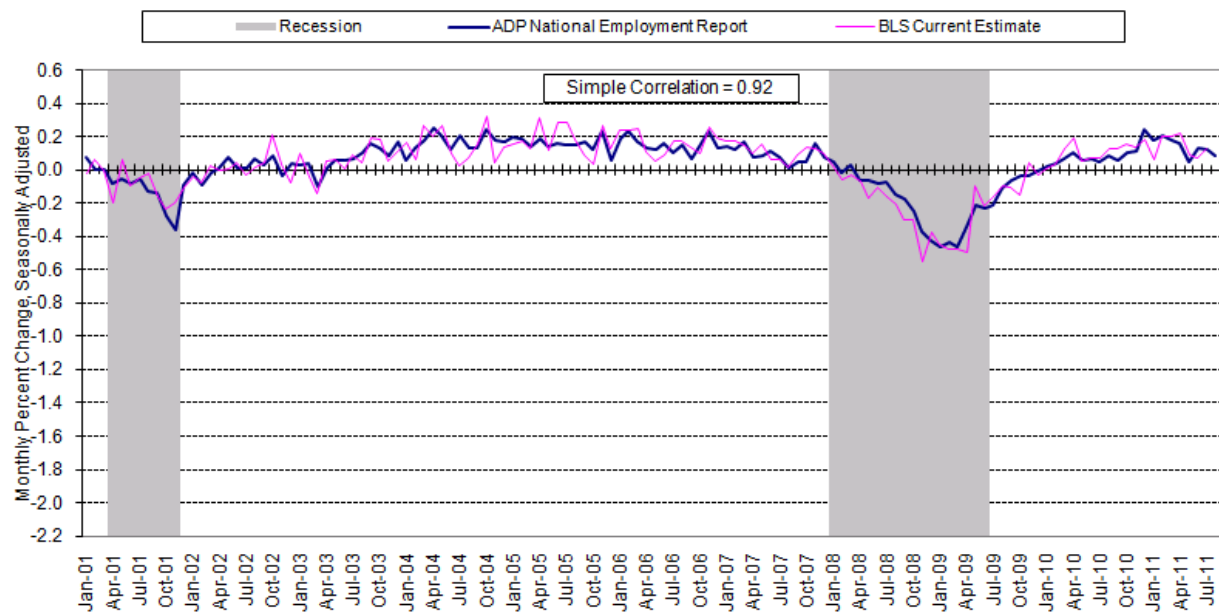
The matched sample used to develop the *ADP National Employment Report* was derived from ADP® data which, during the twelve-month period through June 2010, averaged over 340,000 U.S. business clients and represented over 21 million U.S. employees. This approximately represents the size of the matched sample used this month.

Chart 2. Growth of Private Nonfarm Employment, Goods-Producing Industries



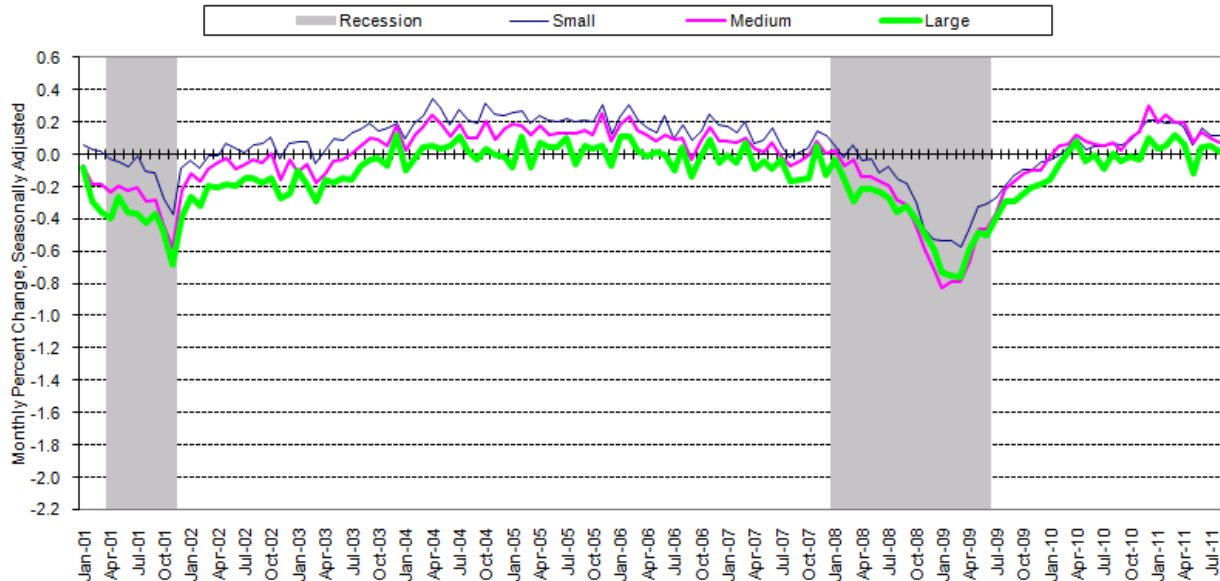
Source: Automatic Data Processing, Inc., Macroeconomic Advisers, LLC., Bureau of Labor Statistics

Chart 3. Growth of Private Nonfarm Employment, Service-Providing Industries



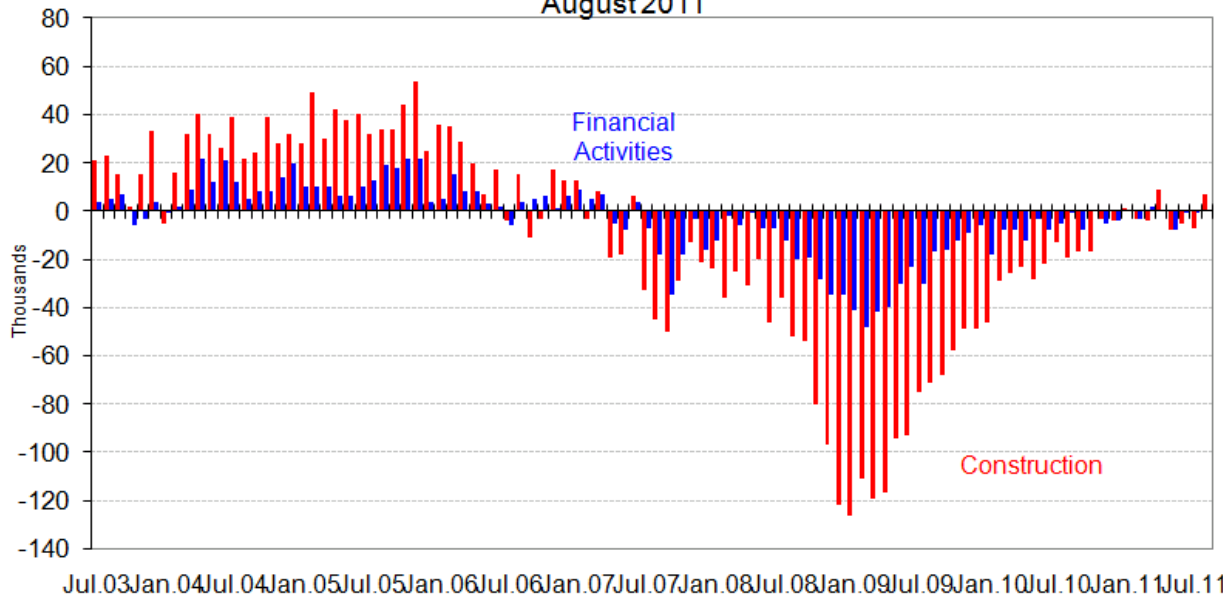
Source: Automatic Data Processing, Inc., Macroeconomic Advisers, LLC., Bureau of Labor Statistics

Chart 4. Growth of Private Nonfarm Employment, by Size of Payroll*



* All size data included in the ADP National Employment Report is based on size of payroll. In some cases, small and medium-size payrolls belong to businesses employing more workers than indicated by the size grouping.
 Source: Automatic Data Processing, Inc., Macroeconomic Advisers, LLC.

**Monthly Changes of Employment in Construction and Financial Activities
 August 2011**



Source: Automatic Data Processing, Inc., Macroeconomic Advisers, LLC

About the *ADP National Employment Report*[®]

The *ADP National Employment Report*[®], sponsored by ADP[®], was developed and is maintained by Macroeconomic Advisers, LLC. It is a measure of employment derived from an anonymous subset of roughly 500,000 U.S. business clients. During the twelve-month period through June 2010, this subset averaged over 340,000 U.S. business clients and over 21 million U.S. employees working in all private industrial sectors. The *ADP Small Business Report*[®] is a monthly estimate of private nonfarm employment among companies in the United States with 1-49 employees and is a subset of the *ADP National Employment Report*. The data for both reports is collected for pay periods that can be interpolated to include the week of the 12th of each month, and processed with statistical methodologies similar to those used by the U.S. Bureau of Labor Statistics to compute employment from its monthly survey of establishments. Due to this processing, this subset is modified to make it indicative of national employment levels; therefore, the resulting employment changes computed for the *ADP National Employment Report* are not representative of changes in ADP's total base of U.S. business clients.

For a description of the underlying data and the statistical properties of the series, please see “*ADP National Employment Report: Development Methodology*” at <http://ADPEmploymentreport.com/methodology.aspx>.

The September 2011 *ADP National Employment Report* will be released October 5, 2011, at 8:15 AM ET. For a full schedule of future releases, please visit: www.ADPEmploymentreport.com.

Media contacts: ADP Public Relations: 973-974-7612

Macroeconomic Advisers: 314-721-4747

Technical information: 314-721-4747

www.ADPEmploymentreport.com

The ADP logo, ADP, ADP National Employment Report, and ADP Small Business Report are registered trademarks of ADP, Inc.