



Published on Thursday, January 5, 2012, 8:15 AM ET

December 2011 ADP National Employment Report®

ADP today reported that employment in the U.S. nonfarm private business sector increased by 325,000 from November to December on a seasonally adjusted basis. The estimated advance in employment from October to November was revised down slightly to 204,000 from the initially reported 206,000.

The increase in December was the largest monthly gain since last December 2010 and nearly twice the average monthly gain since May when employment decelerated sharply.

Employment in the private, service-providing sector rose 273,000 in December, which is up from an increase of 176,000 in November. Employment in the private, goods-producing sector increased 52,000 in December, while manufacturing employment increased 22,000.

Employment on large payrolls—those with 500 or more workers—increased 37,000, and employment on medium payrolls—those with 50 to 499 workers—rose 140,000 in December. Employment on small payrolls—those with up to 49 workers—rose 148,000 that same period, up from the 109,000 jobs created among small businesses last month. Of the 148,000 jobs created by small businesses, 18,000 jobs were created by the goods-producing sector and 130,000 jobs were created by the service-producing sector.

Employment in the construction industry increased 26,000 this month, which is up from an increase of 17,000 in November. Employment in the financial services sector declined 1,000 in December.

For information on the construction sector and use of the *ADP Report*, please visit the methodology section of the *ADP National Employment Report* website at <http://ADPemploymentreport.com/methodology.aspx>.

** All size data included in the ADP National Employment Report is based on size of payroll. In some cases, small and medium-size payrolls belong to businesses employing more workers than indicated by the size grouping.*

DERIVED FROM ADP PAYROLL DATA

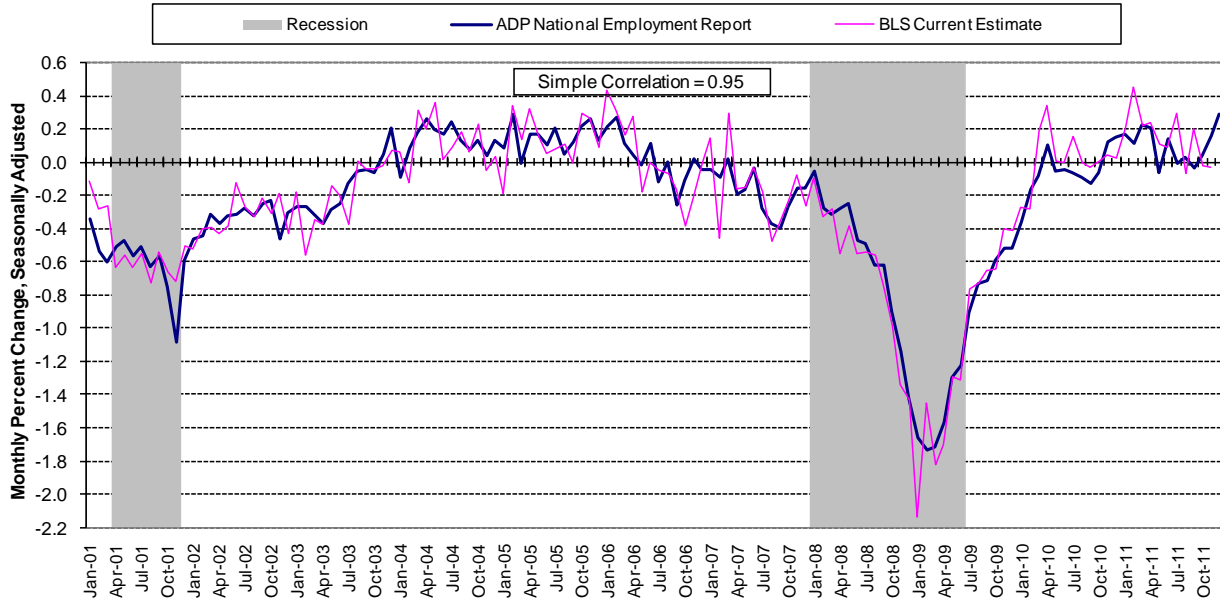
Table 1. Employees on nonfarm private payrolls by selected industry sector and size*
(In thousands)

Industry / Size of Payroll	Seasonally Adjusted						Change from: Nov.2011 - Dec.2011p
	Jul. 2011	Aug. 2011	Sep. 2011	Oct. 2011	Nov. 2011p	Dec. 2011p	
Total nonfarm private.....	108,756	108,841	108,971	109,117	109,321	109,646	325
Small (1-49).....	49,264	49,320	49,391	49,461	49,570	49,718	148
Medium (50-499).....	42,032	42,060	42,111	42,179	42,263	42,403	140
Large (> 499).....	17,460	17,461	17,469	17,477	17,488	17,525	37
Goods-producing.....	17,828	17,833	17,827	17,834	17,862	17,914	52
Small (1-49).....	6,645	6,651	6,652	6,654	6,670	6,688	18
Medium (50-499).....	7,766	7,769	7,772	7,784	7,800	7,832	32
Large (> 499).....	3,417	3,413	3,403	3,396	3,392	3,394	2
Service-providing.....	90,928	91,008	91,144	91,283	91,459	91,732	273
Small (1-49).....	42,619	42,669	42,739	42,807	42,900	43,030	130
Medium (50-499).....	34,266	34,291	34,339	34,395	34,463	34,571	108
Large (> 499).....	14,043	14,048	14,066	14,081	14,096	14,131	35
Addendum:							
Manufacturing.....	11,675	11,667	11,660	11,657	11,663	11,685	22

p = preliminary; subject to revision
 * All size data included in the ADP National Employment Report is based on size of payroll. In some cases, small and medium-size payrolls belong to businesses employing more workers than indicated by the size grouping.

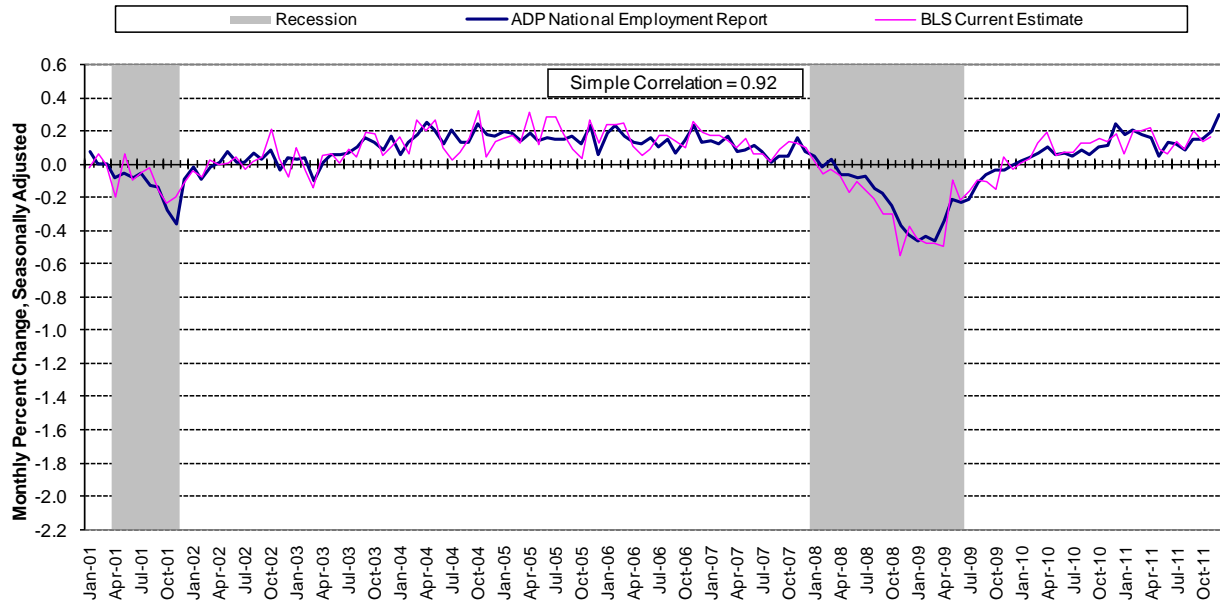
The matched sample used to develop the *ADP National Employment Report* was derived from ADP data, which, during 2010, averaged about 337,000 U.S. business clients and represented over 21 million U.S. employees. This approximately represents the size of the matched sample used this month.

Chart 1. Growth of Private Nonfarm Employment, Goods-Producing Industries



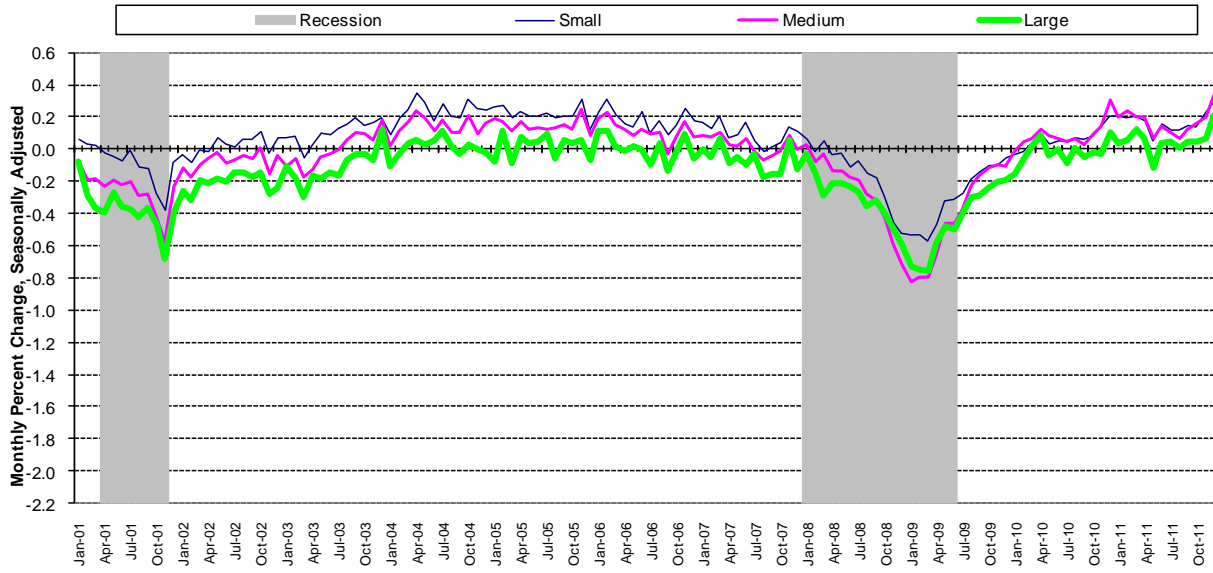
Source: Automatic Data Processing, Inc., Macroeconomic Advisers, LLC., Bureau of Labor Statistics

Chart 2. Growth of Private Nonfarm Employment, Service-Providing Industries



Source: Automatic Data Processing, Inc., Macroeconomic Advisers, LLC., Bureau of Labor Statistics

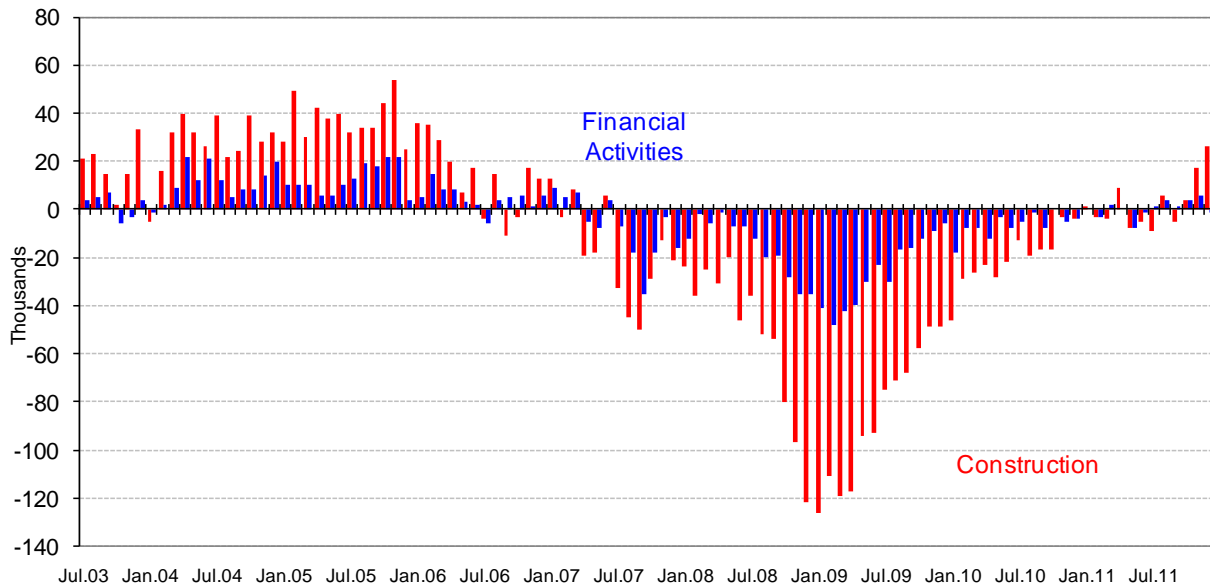
Chart 3. Growth of Private Nonfarm Employment, by Size of Payroll*



Source: Automatic Data Processing, Inc., Macroeconomic Advisers, LLC.

* All size data included in the ADP National Employment Report is based on size of payroll. In some cases, small and medium-size payrolls belong to businesses employing more workers than indicated by the size grouping.

Chart 4. Monthly Changes of Employment in Construction and Financial Activities



Source: Automatic Data Processing, Inc., Macroeconomic Advisers, LLC

About the *ADP National Employment Report*[®]

The *ADP National Employment Report*[®], sponsored by ADP[®], was developed and is maintained by Macroeconomic Advisers, LLC. It is a measure of employment derived from an anonymous subset of roughly 500,000 U.S. business clients. During 2010, this subset averaged about 337,000 U.S. business clients and represented over 21 million U.S. employees working in all private industrial sectors. The *ADP Small Business Report*[®] is a monthly estimate of private nonfarm employment among companies in the United States with 1-49 employees and is a subset of the *ADP National Employment Report*. The data for both reports is collected for pay periods that can be interpolated to include the week of the 12th of each month, and processed with statistical methodologies similar to those used by the U.S. Bureau of Labor Statistics to compute employment from its monthly survey of establishments. Due to this processing, this subset is modified to make it indicative of national employment levels; therefore, the resulting employment changes computed for the *ADP National Employment Report* are not representative of changes in ADP's total base of U.S. business clients.

For a description of the underlying data and the statistical properties of the series, please see “*ADP National Employment Report: Development Methodology*” at <http://ADPEmploymentreport.com/methodology.aspx>.

The January 2012 *ADP National Employment Report* will be released February 1, 2012, at 8:15 AM ET. For a full schedule of future releases, please visit: www.ADPEmploymentreport.com.

Media contacts: ADP Public Relations: 973-974-7612
Macroeconomic Advisers: 314-721-4747

Technical information: 314-721-4747
www.ADPEmploymentreport.com

The ADP logo, ADP, ADP National Employment Report, and ADP Small Business Report are registered trademarks of ADP, Inc.