



Published on Thursday, July 7, 2011, 8:15 A.M. ET

June 2011 ADP National Employment Report®

Employment in the U.S. nonfarm private business sector rose 157,000 from May to June on a seasonally adjusted basis, according to the latest [ADP National Employment Report®](#) released today. The estimated advance in employment from April to May was revised down, but only slightly, to 36,000 from the initially reported 38,000.

Today's ADP National Employment Report estimates employment in the service-providing sector rose by 130,000 in June, nearly three times faster than in May, marking 18 consecutive months of employment gains. Employment in the goods-producing sector rose 27,000 in June, more than reversing the decline of 10,000 in May. Manufacturing employment rose 24,000 in June, which has seen growth in seven of the past eight months.

These figures are above the consensus forecast for today's report and for Friday's jobs number from the BLS. Payroll employment growth at this pace usually implies a steady unemployment rate, perhaps even a modest decline. June's figures suggest that the economic recovery, which slipped in the spring, might have found new traction in early summer.

Employment among large businesses, defined as those with 500 or more workers, increased by 10,000, while employment among medium-size businesses, defined as those with between 50 and 499 workers, increased by 59,000. Employment for small businesses, defined as those with fewer than 50 workers, rose 88,000 in June.*

Employment in the construction industry dropped 4,000 in June, but has been essentially flat since last December. The total decrease in construction employment since its peak in January 2007 is 2,124,000. Employment in the financial services sector decreased 3,000 in June, bringing the total employment decrease for that same period to 686,000.

For information on the construction sector and use of the *ADP Report*, please visit the methodology section of the *ADP National Employment Report* website at <http://ADPEmploymentreport.com/methodology.aspx>.

* All size data included in the *ADP National Employment Report* is based on size of payroll. In some cases, small and medium-size payrolls belong to businesses employing more workers than indicated by the size grouping.

DERIVED FROM ADP PAYROLL DATA

Table 1. Employees on nonfarm private payrolls by selected industry sector and size*
(In thousands)

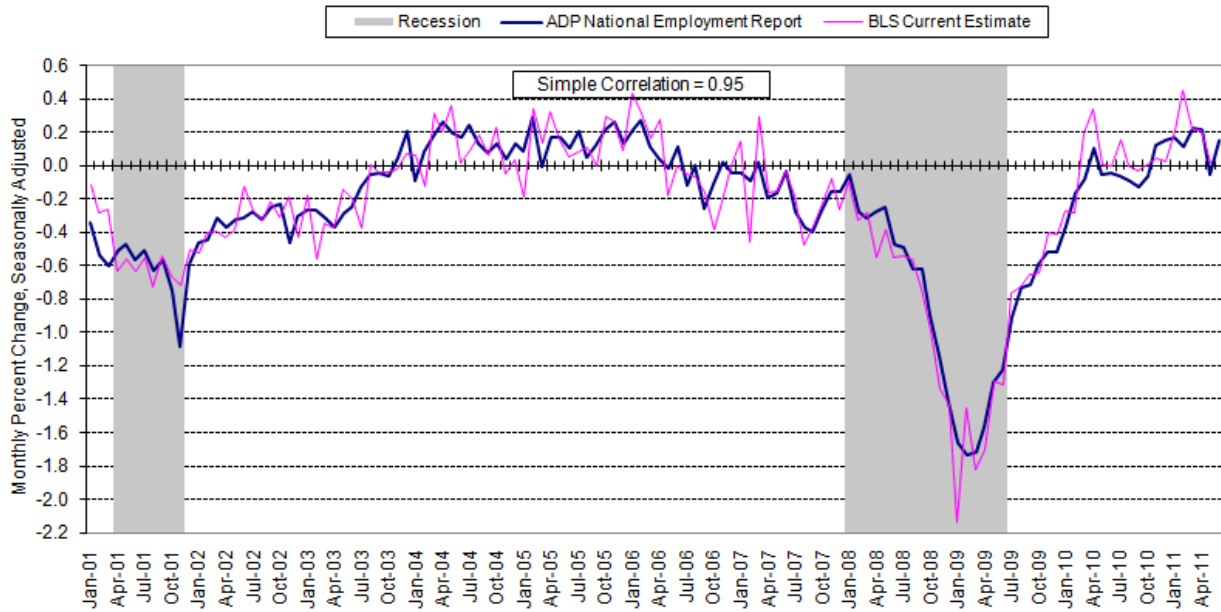
Industry / Size of Payroll	Seasonally Adjusted						
	Jan. 2011	Feb. 2011	Mar. 2011	Apr. 2011	May 2011p	Jun. 2011p	Change from: May 2011 - Jun.2011p
	Total nonfarm private.....	107,883	108,088	108,296	108,484	108,520	108,677
Small (1-49).....	48,824	48,920	49,021	49,109	49,136	49,224	88
Medium (50-499).....	41,634	41,734	41,819	41,908	41,938	41,997	59
Large (> 499).....	17,425	17,434	17,456	17,467	17,446	17,456	10
Goods-producing.....	17,718	17,738	17,778	17,817	17,807	17,834	27
Small (1-49).....	6,604	6,609	6,622	6,635	6,635	6,647	12
Medium (50-499).....	7,683	7,703	7,723	7,751	7,759	7,769	10
Large (> 499).....	3,431	3,426	3,433	3,431	3,413	3,418	5
Service-providing.....	90,165	90,350	90,518	90,667	90,713	90,843	130
Small (1-49).....	42,220	42,311	42,399	42,474	42,501	42,577	76
Medium (50-499).....	33,951	34,031	34,096	34,157	34,179	34,228	49
Large (> 499).....	13,994	14,008	14,023	14,036	14,033	14,038	5
Addendum:							
Manufacturing.....	11,587	11,605	11,641	11,663	11,653	11,677	24

p = preliminary; subject to revision

* All size data included in the ADP National Employment Report is based on size of payroll. In some cases, small and medium-size payrolls belong to businesses employing more workers than indicated by the size grouping.

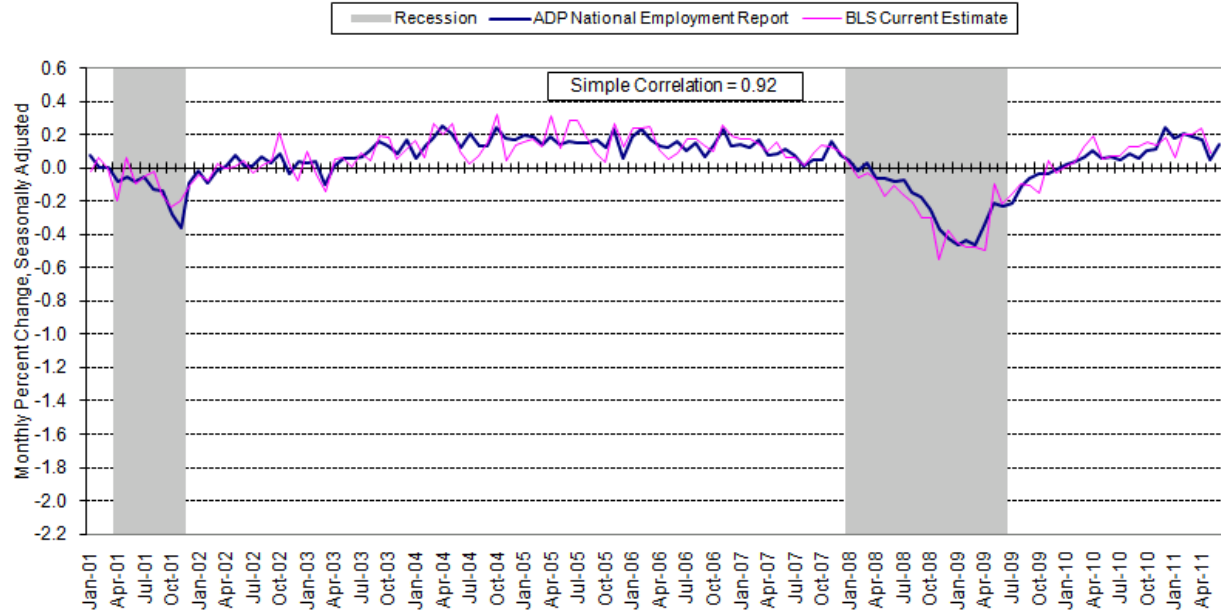
The matched sample used to develop the *ADP National Employment Report* was derived from ADP® data which, during the twelve-month period through June 2010, averaged over 340,000 U.S. business clients and represented over 21 million U.S. employees. This approximately represents the size of the matched sample used this month.

Chart 2. Growth of Private Nonfarm Employment, Goods-Producing Industries



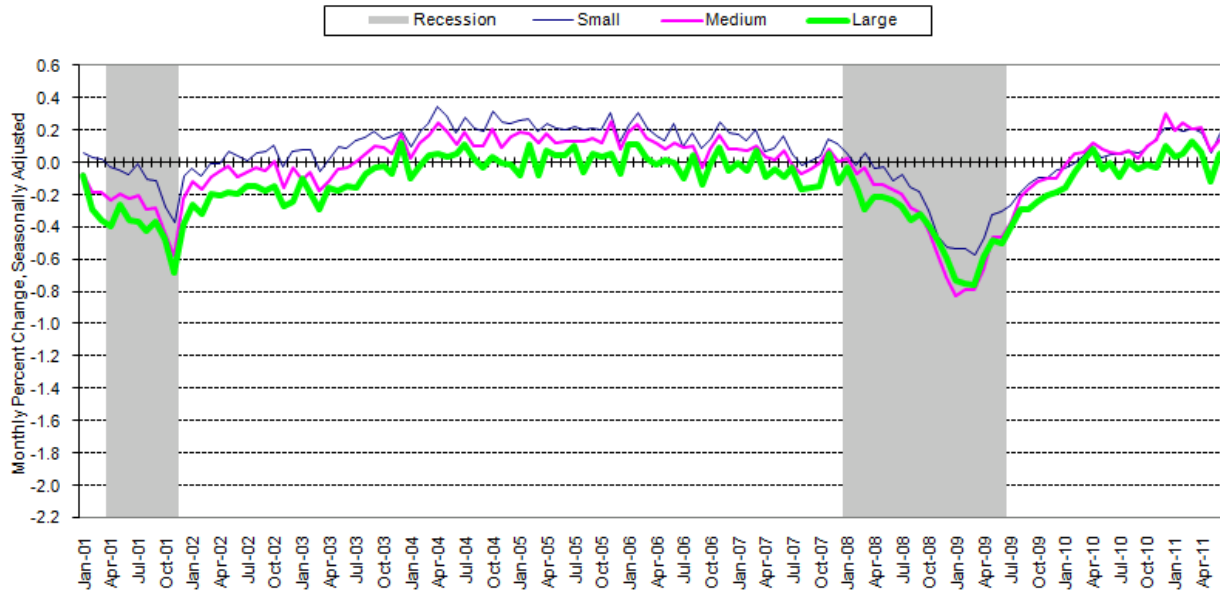
Source: Automatic Data Processing, Inc., Macroeconomic Advisers, LLC., Bureau of Labor Statistics

Chart 3. Growth of Private Nonfarm Employment, Service-Providing Industries



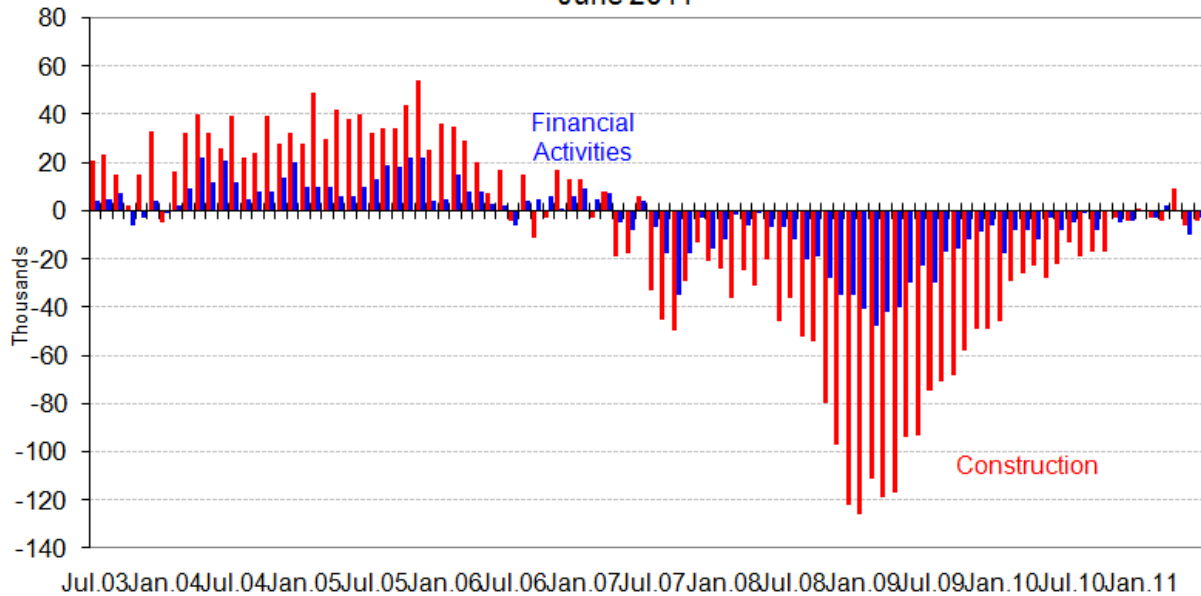
Source: Automatic Data Processing, Inc., Macroeconomic Advisers, LLC., Bureau of Labor Statistics

Chart 4. Growth of Private Nonfarm Employment, by Size of Payroll*



* All size data included in the ADP National Employment Report is based on size of payroll. In some cases, small and medium-size payrolls belong to businesses employing more workers than indicated by the size grouping. Source: Automatic Data Processing, Inc., Macroeconomic Advisers, LLC.

**Monthly Changes of Employment in Construction and Financial Activities
June 2011**



Source: Automatic Data Processing, Inc., Macroeconomic Advisers, LLC

About the ADP National Employment Report®

The *ADP National Employment Report*®, sponsored by ADP®, was developed and is maintained by Macroeconomic Advisers, LLC. It is a measure of employment derived from an anonymous subset of roughly 500,000 U.S. business clients. During the twelve-month period through June 2010, this subset averaged over 340,000 U.S. business clients and over 21 million U.S. employees working in all private industrial sectors. The *ADP Small Business Report*® is a monthly estimate of private nonfarm employment among companies in the United States with 1-49 employees and is a subset of the *ADP National Employment Report*. The data for both reports is collected for pay periods that can be interpolated to include the week of the 12th of each month, and processed with statistical methodologies similar to those used by the U.S. Bureau of

Labor Statistics to compute employment from its monthly survey of establishments. Due to this processing, this subset is modified to make it indicative of national employment levels; therefore, the resulting employment changes computed for the *ADP National Employment Report* are not representative of changes in ADP's total base of U.S. business clients.

For a description of the underlying data and the statistical properties of the series, please see "*ADP National Employment Report: Development Methodology*" at <http://ADPEmploymentreport.com/methodology.aspx>.

The July 2011 *ADP National Employment Report* will be released August 3, 2011 at 8:15 AM ET. For a full schedule of future releases, please visit: www.ADPEmploymentreport.com.

Media contacts: ADP Public Relations: 973-974-7612
Macroeconomic Advisers: 314-721-4747

Technical information: 314-721-4747
www.ADPEmploymentreport.com

The ADP Logo, ADP, ADP National Employment Report, and ADP Small Business Report are registered trademarks of ADP, Inc.