



Published on Wednesday, November 30, 2011, 8:15 AM ET

## November 2011 ADP National Employment Report®

ADP today reported that employment in the U.S. nonfarm private business sector increased by 206,000 from October to November on a seasonally adjusted basis. The estimated advance in employment from September to October was revised up to 130,000 from the initially reported 110,000.

The increase in November was the largest monthly gain since last December and nearly twice the average monthly gain since May when employment decelerated sharply.

Employment in the private, service-providing sector rose 178,000 in November, which is up from an increase of 130,000 in October. Employment in the private, goods-producing sector increased 28,000 in November, while manufacturing employment increased 7,000.

Employment on large payrolls—those with 500 or more workers—increased 12,000, and employment on medium payrolls—those with 50 to 499 workers—rose 84,000 in November. Employment on small payrolls—those with up to 49 workers—rose 110,000 that same period, up from the 67,000 jobs created among small businesses last month. Of the 110,000 jobs created by small businesses, 15,000 jobs were created by the goods-producing sector and 95,000 jobs were created by the service-producing sector.

Employment in the construction industry increased 16,000 this month, the most notable gain in employment in this sector since November 2006. Employment in the financial services sector rose 7,000 in November.

For information on the construction sector and use of the *ADP Report*, please visit the methodology section of the *ADP National Employment Report* website at <http://ADPemploymentreport.com/methodology.aspx>.

*\* All size data included in the ADP National Employment Report is based on size of payroll. In some cases, small and medium-size payrolls belong to businesses employing more workers than indicated by the size grouping.*

**DERIVED FROM ADP PAYROLL DATA**

**Table 1. Employees on nonfarm private payrolls by selected industry sector and size\***  
(In thousands)

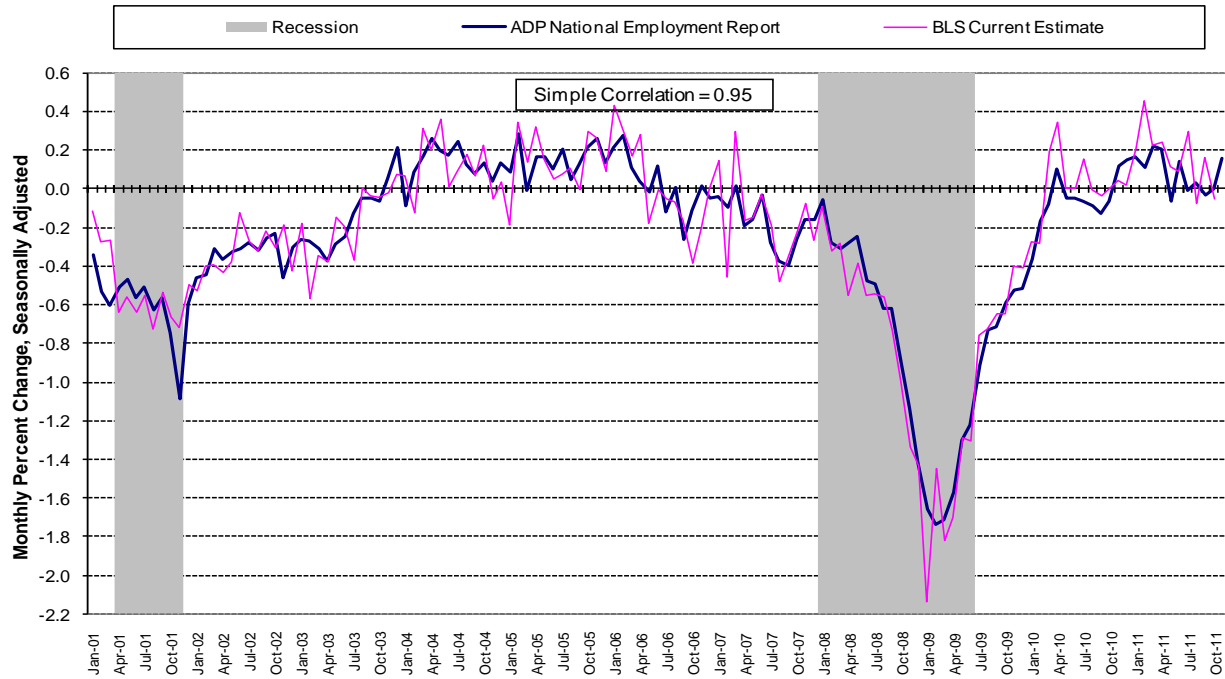
Industry / Size of Payroll	Seasonally Adjusted						Change from: Oct.2011 - Nov.2011p
	Jun. 2011	Jul. 2011	Aug. 2011	Sep. 2011	Oct. 2011p	Nov. 2011p	
<b>Total nonfarm private</b> .....	108,649	108,756	108,841	108,971	109,101	109,307	206
Small (1-49).....	49,208	49,264	49,320	49,391	49,458	49,568	110
Medium (50-499).....	41,989	42,032	42,060	42,111	42,171	42,255	84
Large (> 499).....	17,452	17,460	17,461	17,469	17,472	17,484	12
<b>Goods-producing</b> .....	17,829	17,828	17,833	17,827	17,827	17,855	28
Small (1-49).....	6,644	6,645	6,651	6,652	6,653	6,668	15
Medium (50-499).....	7,767	7,766	7,769	7,772	7,780	7,797	17
Large (> 499).....	3,418	3,417	3,413	3,403	3,394	3,390	-4
<b>Service-providing</b> .....	90,820	90,928	91,008	91,144	91,274	91,452	178
Small (1-49).....	42,564	42,619	42,669	42,739	42,805	42,900	95
Medium (50-499).....	34,222	34,266	34,291	34,339	34,391	34,458	67
Large (> 499).....	14,034	14,043	14,048	14,066	14,078	14,094	16
<b>Addendum:</b>							
Manufacturing.....	11,674	11,675	11,667	11,660	11,655	11,662	7

p = preliminary; subject to revision

\* All size data included in the ADP National Employment Report is based on size of payroll. In some cases, small and medium-size payrolls belong to businesses employing more workers than indicated by the size grouping.

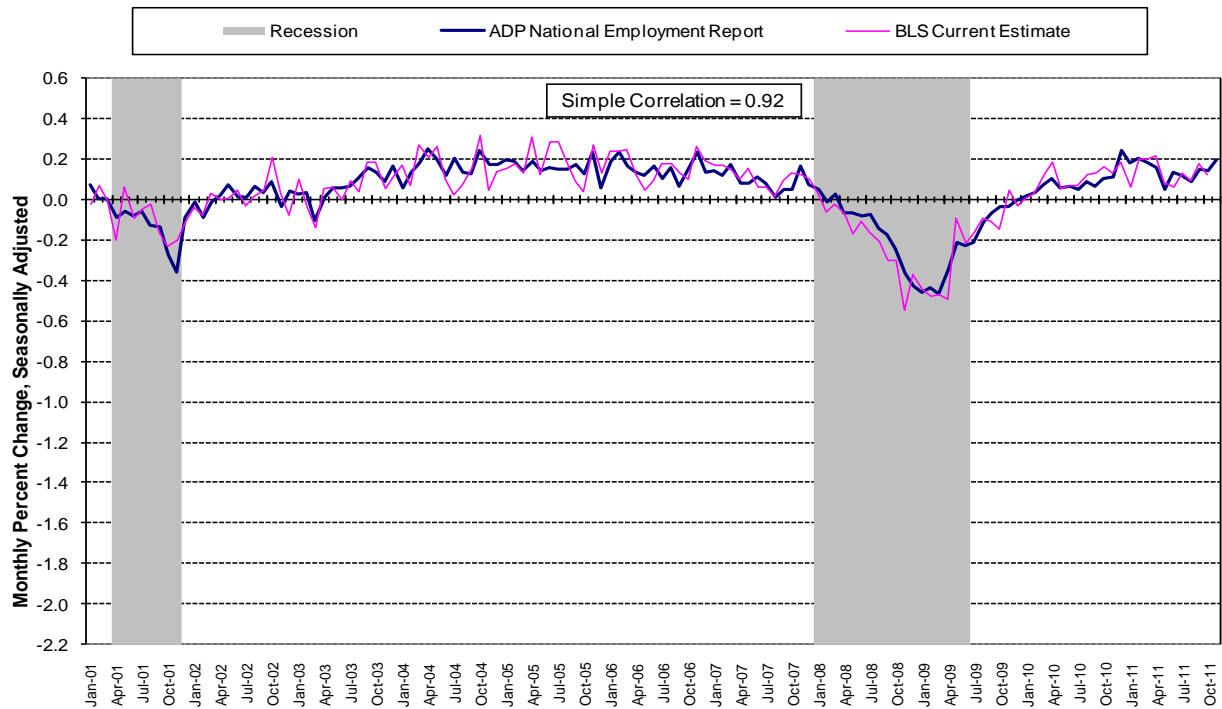
The matched sample used to develop the *ADP National Employment Report* was derived from ADP data, which, during 2010, averaged about 337,000 U.S. business clients and represented over 21 million U.S. employees. This approximately represents the size of the matched sample used this month.

**Chart 1. Growth of Private Nonfarm Employment, Goods-Producing Industries**



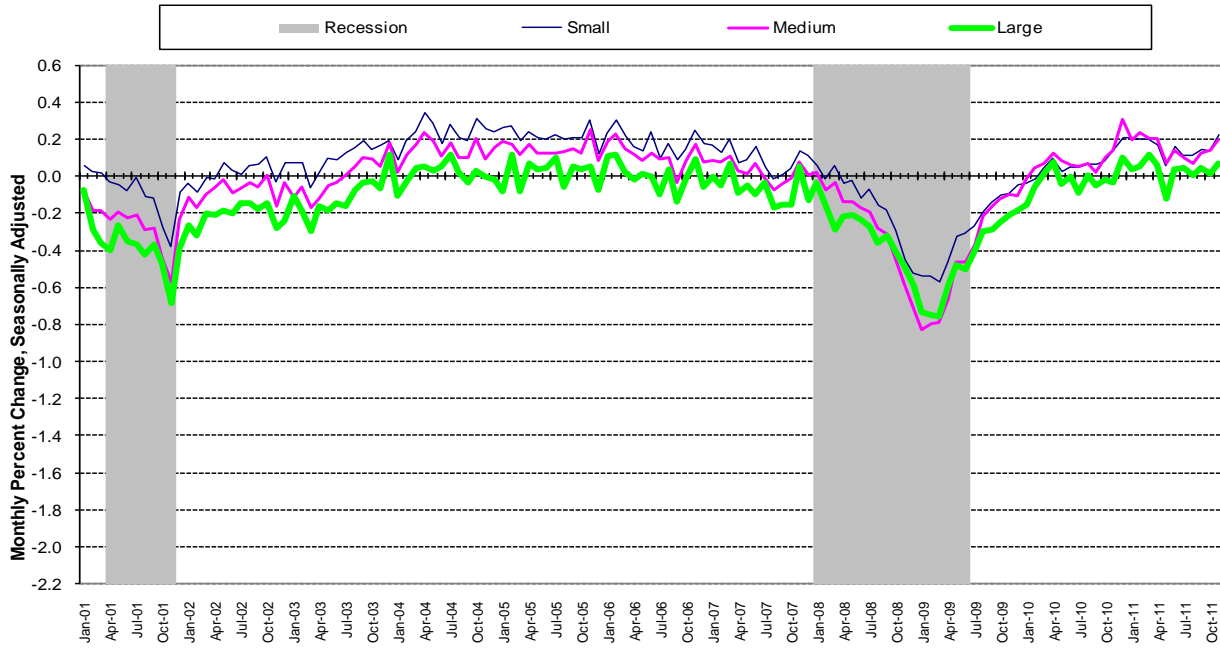
Source: Automatic Data Processing, Inc., Macroeconomic Advisers, LLC., Bureau of Labor Statistics

**Chart 2. Growth of Private Nonfarm Employment, Service-Providing Industries**



Source: Automatic Data Processing, Inc., Macroeconomic Advisers, LLC., Bureau of Labor Statistics

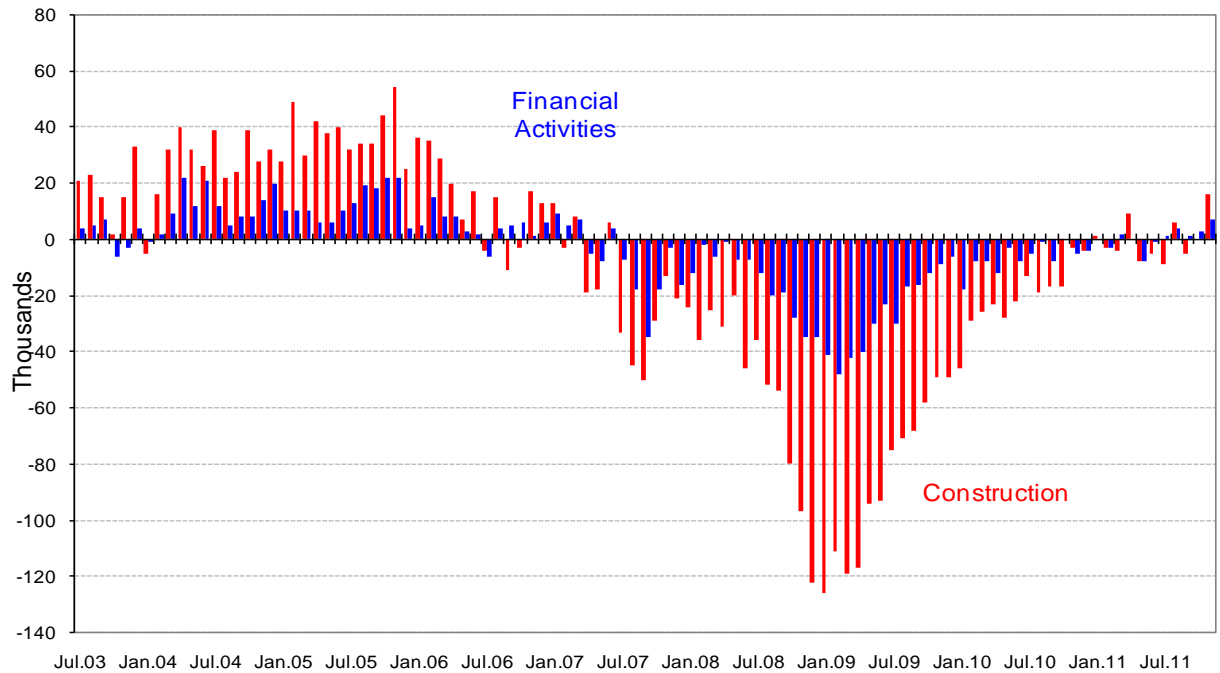
**Chart 3. Growth of Private Nonfarm Employment, by Size of Payroll\***



Source: Automatic Data Processing, Inc., Macroeconomic Advisers, LLC.

\* All size data included in the ADP National Employment Report is based on size of payroll. In some cases, small and medium-size payrolls belong to businesses employing more workers than indicated by the size grouping.

**Chart 4. Monthly Changes of Employment in Construction and Financial Activities**



Source: Automatic Data Processing, Inc., Macroeconomic Advisers,

**About the *ADP National Employment Report*<sup>®</sup>**

The *ADP National Employment Report*<sup>®</sup>, sponsored by ADP<sup>®</sup>, was developed and is maintained by Macroeconomic Advisers, LLC. It is a measure of employment derived from an anonymous subset of roughly 500,000 U.S. business clients. During 2010, this subset averaged about 337,000 U.S. business clients and represented over 21 million U.S. employees working in all private industrial sectors. The *ADP Small Business Report*<sup>®</sup> is a monthly estimate of private nonfarm employment among companies in the United States with 1-49 employees and is a subset of the *ADP National Employment Report*. The data for both reports is collected for pay periods that can be interpolated to include the week of the 12th of each month, and processed with statistical methodologies similar to those used by the U.S. Bureau of Labor Statistics to compute employment from its monthly survey of establishments. Due to this processing, this subset is modified to make it indicative of national employment levels; therefore, the resulting employment changes computed for the *ADP National Employment Report* are not representative of changes in ADP's total base of U.S. business clients.

For a description of the underlying data and the statistical properties of the series, please see “*ADP National Employment Report: Development Methodology*” at <http://ADPEmploymentreport.com/methodology.aspx>.

The December 2011 *ADP National Employment Report* will be released January 5, 2012, at 8:15 AM ET. For a full schedule of future releases, please visit: [www.ADPEmploymentreport.com](http://www.ADPEmploymentreport.com).

Media contacts: ADP Public Relations: 973-974-7612  
Macroeconomic Advisers: 314-721-4747

Technical information: 314-721-4747  
[www.ADPEmploymentreport.com](http://www.ADPEmploymentreport.com)

*The ADP logo, ADP, ADP National Employment Report, and ADP Small Business Report are registered trademarks of ADP, Inc.*