



Wednesday, May 30, 2007, 8:15 A.M. EDT

Private nonfarm employment grew 97,000 from April to May of 2007 on a seasonally adjusted basis, according to the *ADP National Employment Report*TM.

This month's *ADP National Employment Report* suggests monthly gains of employment in the private nonfarm business sector averaged 85,000 over the last three months, as estimated by the *ADP National Employment Report*.

Continuing recent trends, employment grew 120,000 in the service-providing sectors of the economy, while employment fell 23,000 in the goods-producing sectors, which marks the sixth consecutive monthly decline. This includes a decline of 10,000 in the manufacturing sector.

Also continuing recent trends, small and medium-sized businesses accounted for most of the rise in employment in May, with gains of 58,000 and 31,000 respectively. May's growth was further aided by an employment increase of 8,000 at large businesses, the first monthly gain since November 2006.

For information on the construction and use of the *ADP Report*, please visit the methodology section of the *ADP National Employment Report* website at <http://ADPEmploymentreport.com/methodology.aspx>.

Due to the Independence Day holiday, the June 2007 *ADP National Employment Report* will be released on Thursday, July 5, 2007 at 8:15 a.m. EDT.



National Employment Report

DERIVED FROM ADP PAYROLL DATA

Table 1. Employees on nonfarm private payrolls by selected industry sector and size
(In thousands)

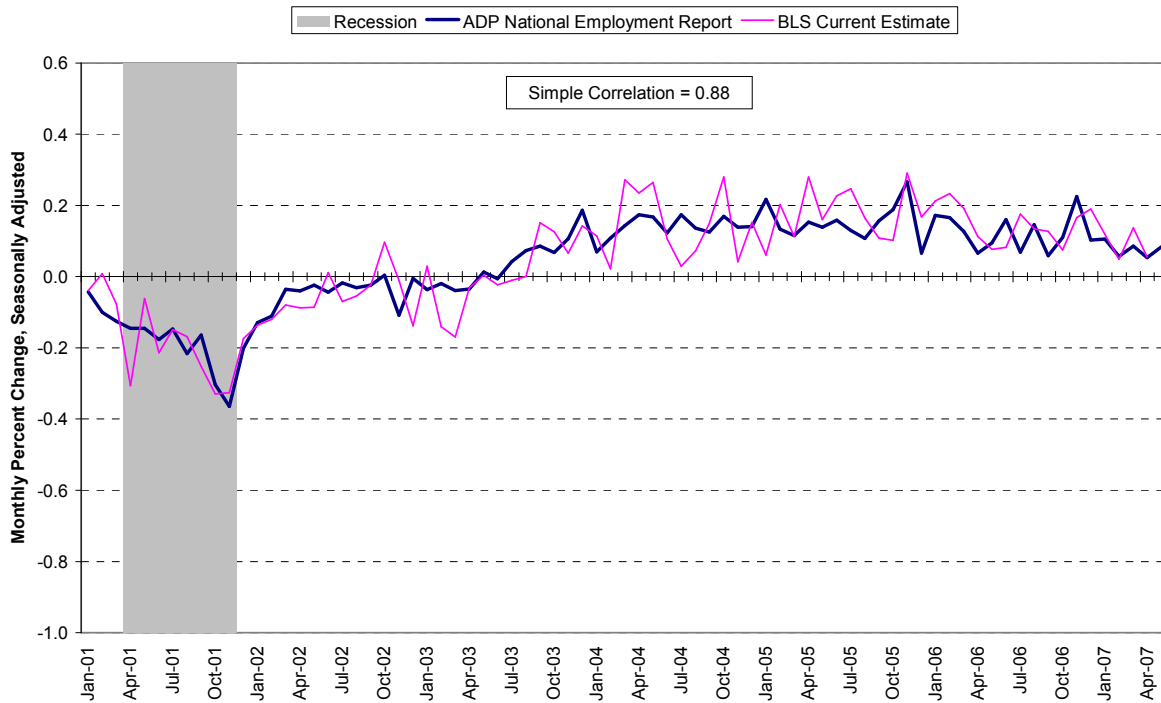
Industry / Size of Payroll	Seasonally Adjusted						Change from: Apr. 2007 - May 2007p
	Dec. 2006	Jan. 2007	Feb. 2007	Mar. 2007	Apr. 2007	May 2007p	
Total nonfarm private	114,933	115,054	115,119	115,217	115,278	115,375	97
Small (1-49).....	50,299	50,373	50,425	50,500	50,541	50,599	58
Medium (50-499).....	45,191	45,243	45,276	45,314	45,341	45,372	31
Large (> 499).....	19,443	19,438	19,418	19,403	19,396	19,404	8
Goods-producing	22,473	22,457	22,416	22,390	22,347	22,324	-23
Small (1-49).....	8,115	8,121	8,117	8,120	8,108	8,105	-3
Medium (50-499).....	9,926	9,917	9,901	9,883	9,865	9,849	-16
Large (> 499).....	4,432	4,419	4,398	4,387	4,374	4,370	-4
Service-providing	92,460	92,597	92,703	92,827	92,931	93,051	120
Small (1-49).....	42,184	42,252	42,308	42,380	42,433	42,494	61
Medium (50-499).....	35,265	35,326	35,375	35,431	35,476	35,523	47
Large (> 499).....	15,011	15,019	15,020	15,016	15,022	15,034	12
Addendum:							
Manufacturing.....	14,095	14,072	14,044	14,028	14,009	13,999	-10

p = preliminary

The matched sample used to develop the *ADP National Employment Report* was derived from ADP data which, during the last six months of 2006, averaged 364,000 payrolls representing 22 million U.S. employees. This approximately represents the size of the matched sample used this month.

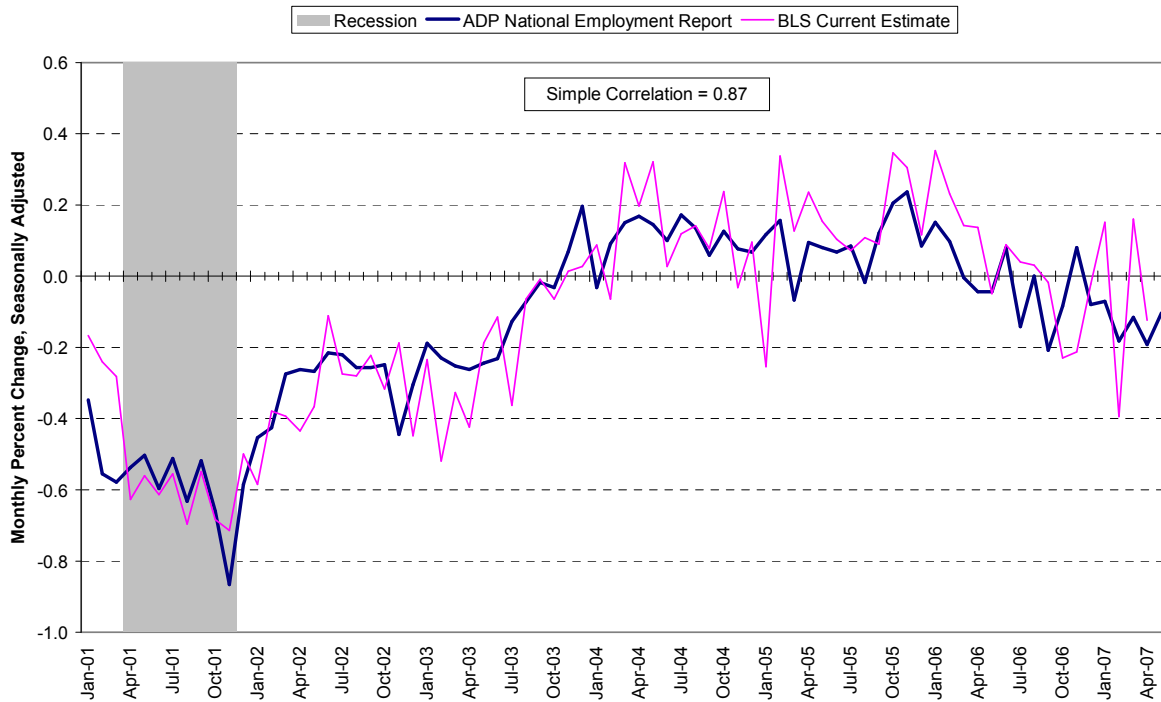


Chart 1. Growth of Private Nonfarm Employment, All Industries



Source: Automatic Data Processing, Inc., Macroeconomic Advisers, LLC., Bureau of Labor Statistics

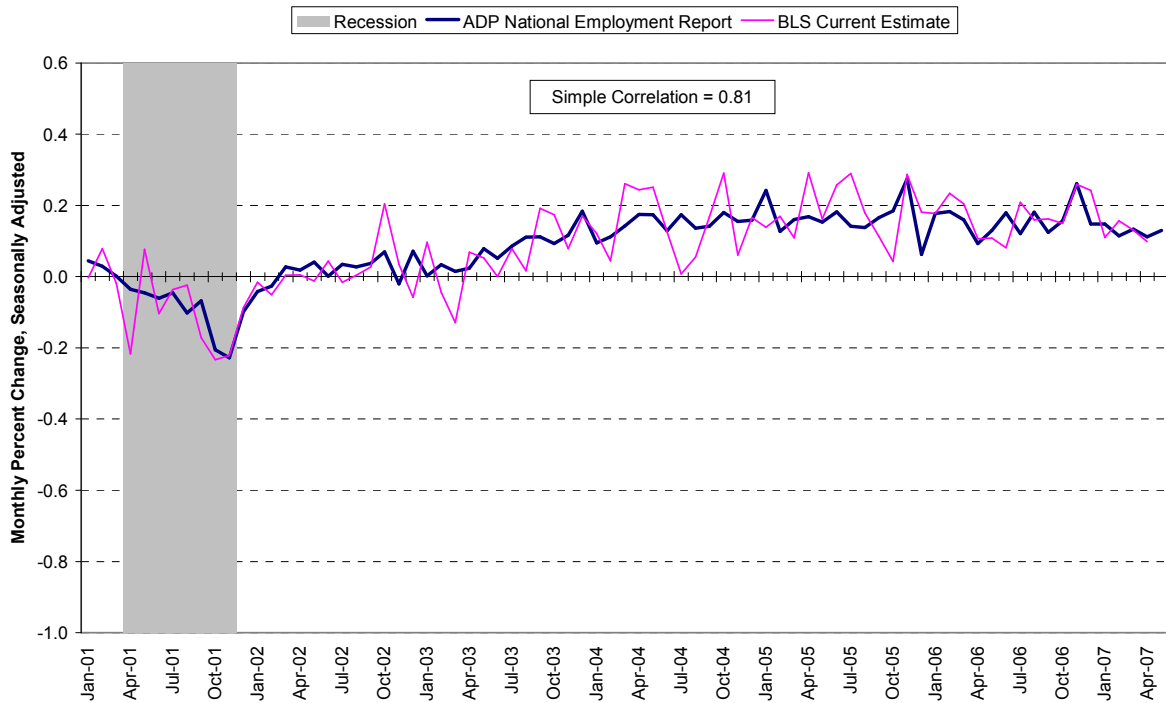
Chart 2. Growth of Private Nonfarm Employment, Goods-Producing Industries



Source: Automatic Data Processing, Inc., Macroeconomic Advisers, LLC., Bureau of Labor Statistics

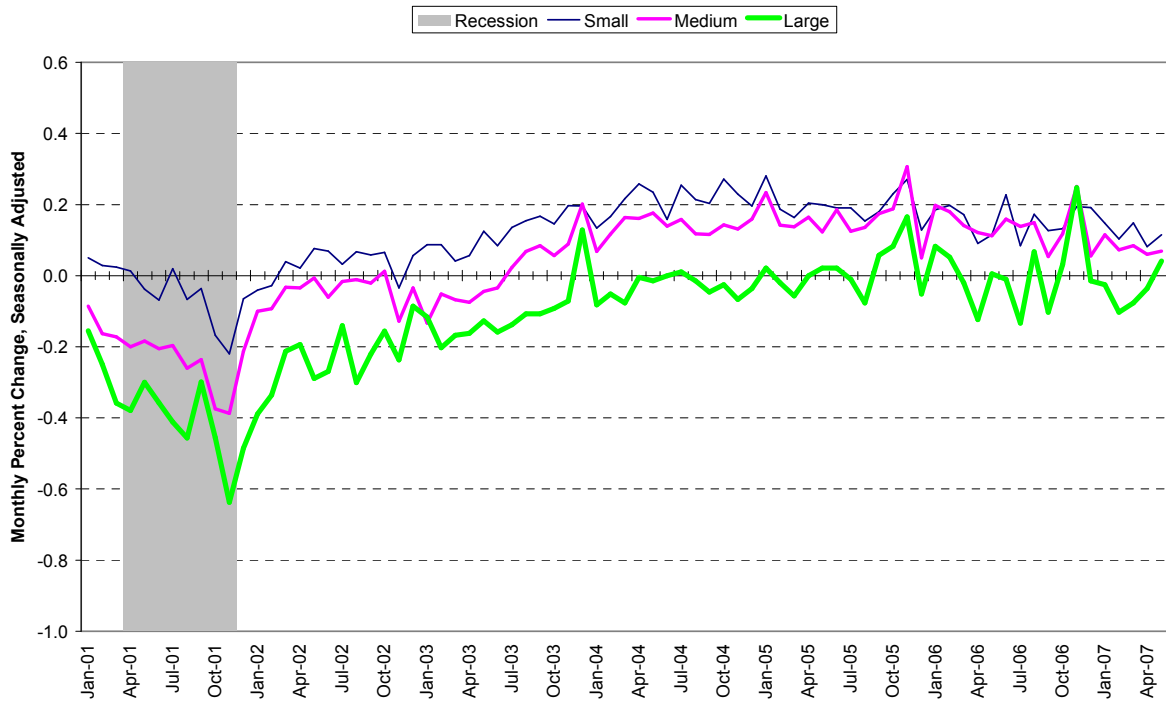


Chart 3. Growth of Private Nonfarm Employment, Service-Providing Industries



Source: Automatic Data Processing, Inc., Macroeconomic Advisers, LLC., Bureau of Labor Statistics

Chart 4. Growth of Private Nonfarm Employment, by Size of Payroll



Source: Automatic Data Processing, Inc., Macroeconomic Advisers, LLC.



About the *ADP National Employment Report*SM

The *ADP National Employment Report*, sponsored by ADP[®], was developed and is maintained by Macroeconomic Advisers, LLC. It is a measure of employment derived from an anonymous subset of roughly 500,000 U.S. business clients. During the last six months of 2006, this subset represented approximately 364,000 U.S. business clients and approximately 22 million U.S. employees working in all private industrial sectors. The data is collected for pay periods that can be interpolated to include the week of the 12th of each month, and processed with statistical methodologies similar to those used by the U.S. Bureau of Labor Statistics to compute employment from its monthly survey of establishments. Due to this processing, this subset is modified to make it indicative of national employment levels; therefore, the resulting employment changes computed for the *ADP National Employment Report* are not representative of changes in ADP's total base of U.S. business clients.

Empirical analysis performed by Macroeconomic Advisers suggests that the *ADP National Employment Report* can be used to develop a forecast of “true” employment that is superior to those resulting from consensus estimates, survey data, or other models of employment that do not incorporate the results of the *ADP Report*.

For a description of the underlying data and the statistical properties of the series, please see “*ADP National Employment Report: Development Methodology*” at <http://ADPEmploymentreport.com/methodology.aspx>.

For a full schedule of future releases, please visit: www.ADPEmploymentreport.com

Media contacts: ADP Public Relations: 973-974-7612
Macroeconomic Advisers: 314-721-4747

Technical information: 314-721-4747
www.ADPEmploymentreport.com

The ADP National Employment Report is a trademark and service mark of ADP of North America, Inc.