



Revisions to the *ADP National Employment Report*TM

The February 2007 *ADP National Employment Report* released on Wednesday March 7, 2007 is the first regularly released *ADP Report* to incorporate key methodological revisions, including: (1) a larger sample of payrolls; (2) improved procedures for seasonal adjustment; (3) better detection of outliers; and (4) additional detail on private nonfarm employment by select industry and by size of payroll. Additional details on the revisions are available at www.ADPemploymentreport.com.

Wednesday, March 7, 2007, 8:15 am EST

Private nonfarm employment grew a modest 57,000 from January to February of 2007 on a seasonally adjusted basis, according to the *ADP National Employment Report*.

This month's *ADP National Employment Report* suggests employment in February grew somewhat less than the recent three month average increase in employment of 99,000, as estimated by the *ADP National Employment Report*.

Continuing recent trends, employment in the service-providing sector of the economy advanced 100,000, while employment in the goods-producing sector, which includes the construction industry, declined by 43,000. Employment in manufacturing industries fell by 29,000.

Other new detail in The *ADP National Employment Report* shows that employment at small and medium size businesses employing less than 500 workers grew 86,000, while employment at larger businesses declined 29,000. Over the last six months, small and medium size businesses accounted for most of the growth in private nonfarm employment.

For information on the construction and use of the *ADP Report*, please visit the methodology section of the *ADP National Employment Report* website at <http://ADPemploymentreport.com/methodology.aspx>.



DERIVED FROM ADP PAYROLL DATA

Table 1. Employees on nonfarm private payrolls by selected industry sector and size
(In thousands)

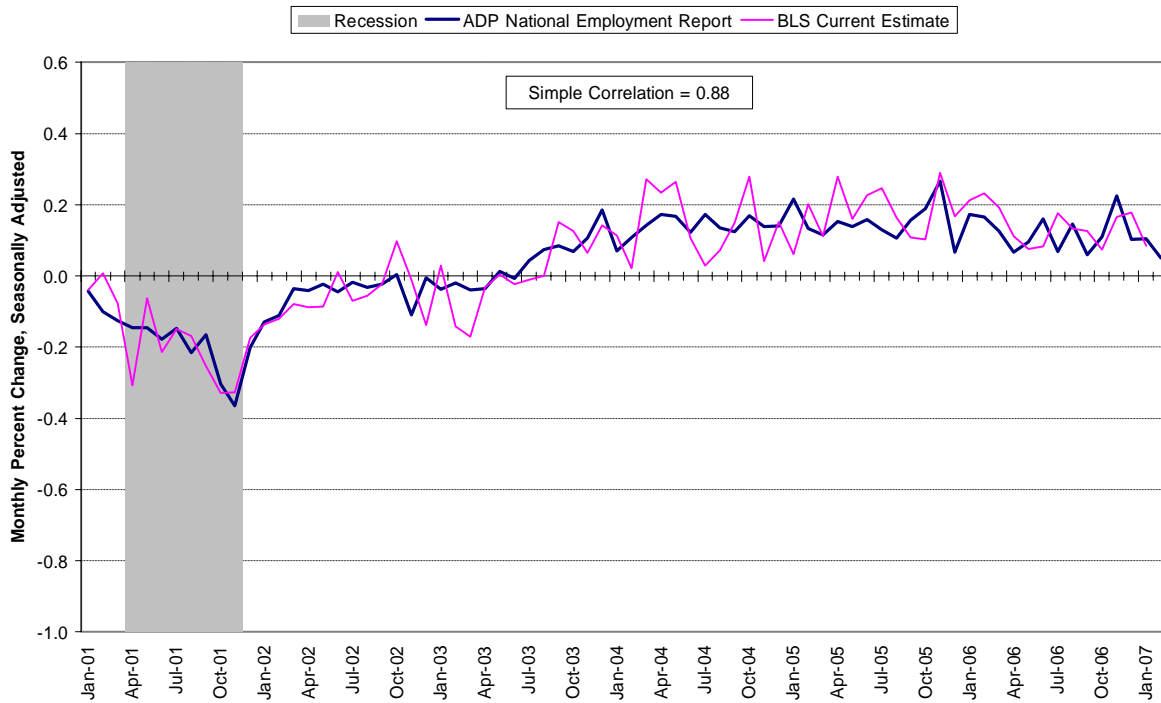
Size of Payroll	Seasonally Adjusted						Change from: Jan. 2007 - Feb. 2007p
	Sep. 2006	Oct. 2006	Nov. 2006	Dec. 2006	Jan. 2007	Feb. 2007p	
Total nonfarm private.....	114,432	114,557	114,815	114,933	115,054	115,111	57
Small(1-49).....	50,040	50,106	50,203	50,299	50,373	50,426	53
Medium(50-499).....	45,000	45,053	45,166	45,191	45,243	45,276	33
Large (> 499).....	19,392	19,398	19,446	19,443	19,438	19,409	-29
Goods-producing.....	22,492	22,473	22,491	22,473	22,457	22,414	-43
Small(1-49).....	8,085	8,087	8,102	8,115	8,121	8,118	-3
Medium(50-499).....	9,941	9,933	9,943	9,926	9,917	9,900	-17
Large (> 499).....	4,466	4,453	4,446	4,432	4,419	4,396	-23
Service-providing.....	91,940	92,084	92,324	92,460	92,597	92,697	100
Small(1-49).....	41,955	42,019	42,101	42,184	42,252	42,308	56
Medium(50-499).....	35,059	35,120	35,223	35,265	35,326	35,376	50
Large (> 499).....	14,926	14,945	15,000	15,011	15,019	15,013	-6
Addendum:							
Manufacturing.....	14,133	14,118	14,117	14,095	14,072	14,043	-29

p = preliminary

The matched sample used to develop the *ADP National Employment Report* was derived from ADP data, and during the last six months of 2006, averaged 364,000 payrolls representing 22 million U.S. employees. This approximately represents the size of the matched sample used this month.

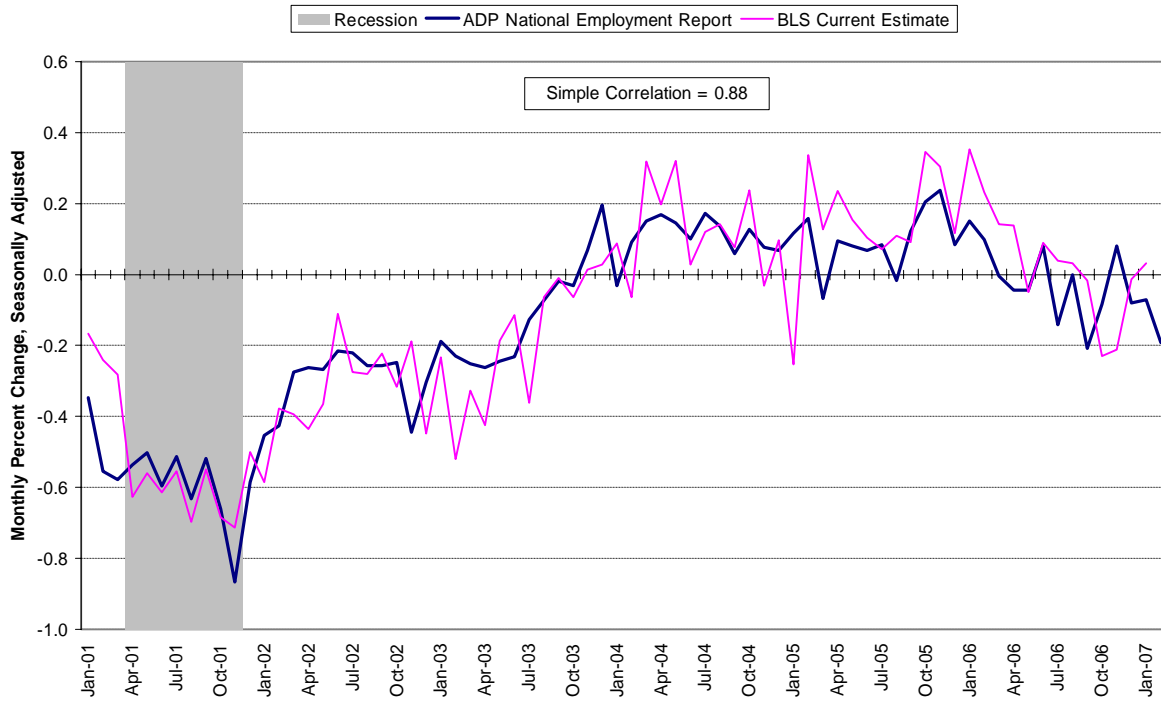


Chart 1. Growth of Private Nonfarm Employment, All Industries



Source: Automatic Data Processing, Inc., Macroeconomic Advisers, LLC., Bureau of Labor Statistics

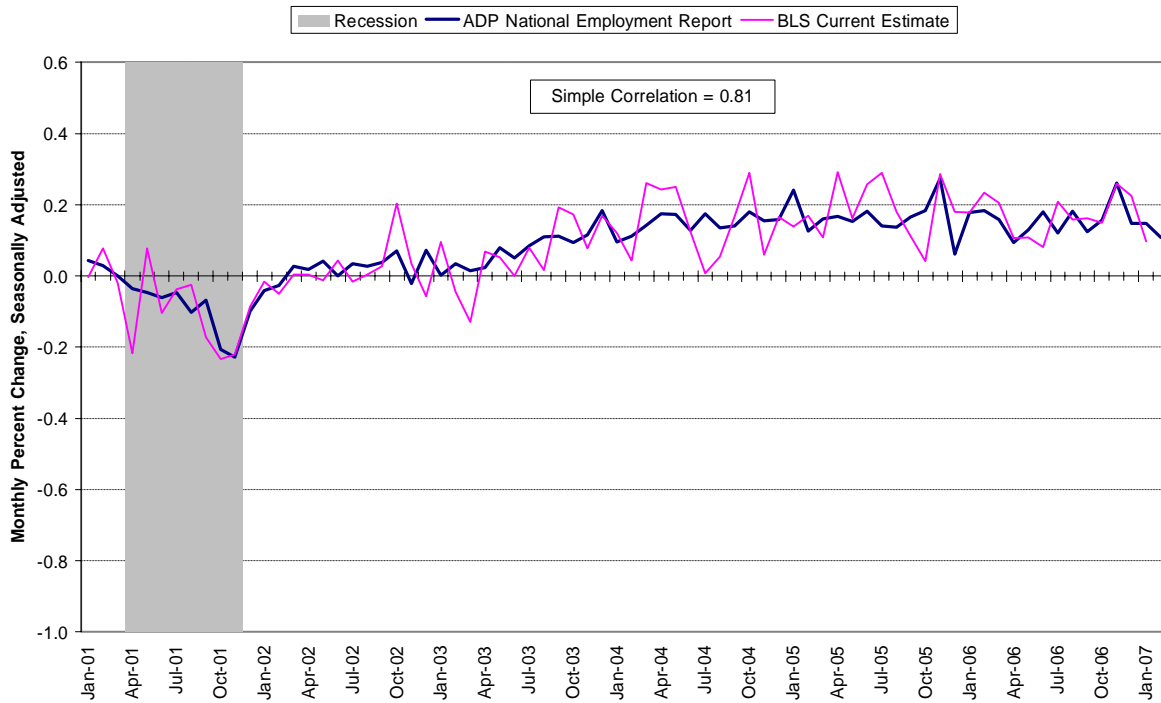
Chart 2. Growth of Private Nonfarm Employment, Goods-Producing Industries



Source: Automatic Data Processing, Inc., Macroeconomic Advisers, LLC., Bureau of Labor Statistics

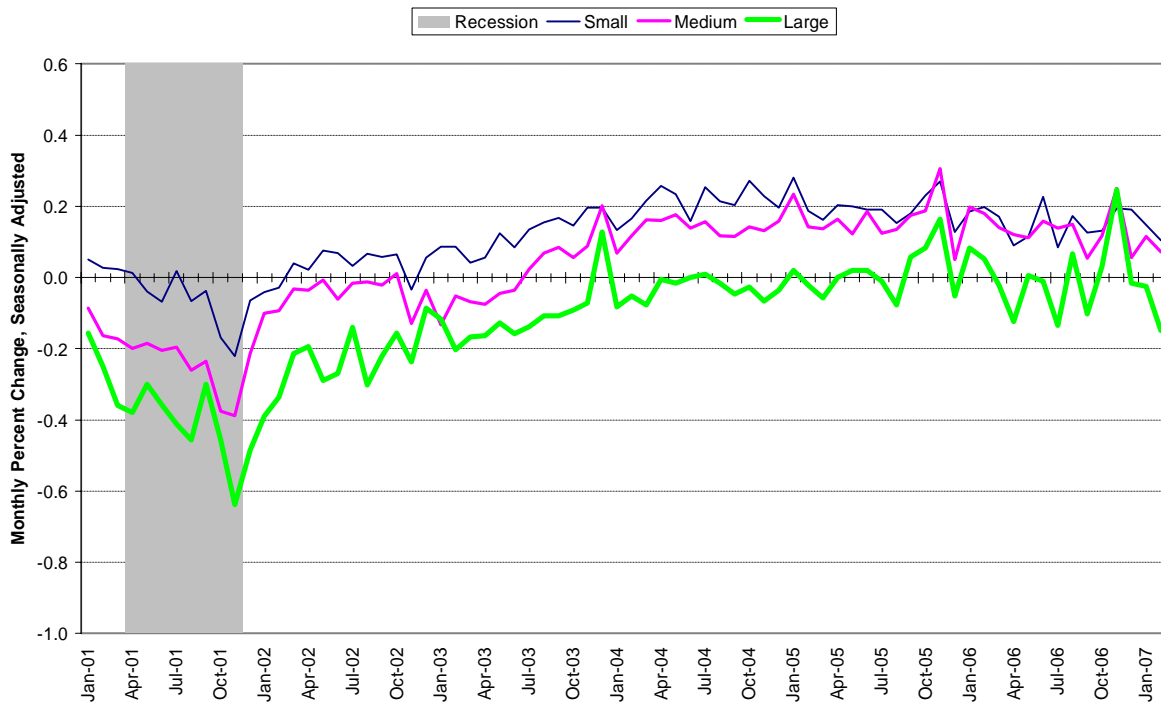


Chart 3. Growth of Private Nonfarm Employment, Service-Providing Industries



Source: Automatic Data Processing, Inc., Macroeconomic Advisers, LLC., Bureau of Labor Statistics

Chart 4. Growth of Private Nonfarm Employment, by Size of Payroll



Source: Automatic Data Processing, Inc., Macroeconomic Advisers, LLC.



About the *ADP National Employment Report*SM

The *ADP National Employment Report*, sponsored by ADP[®], was developed and is maintained by Macroeconomic Advisers, LLC. It is a measure of employment derived from an anonymous subset of 500,000 U.S. business clients. During the last six months of 2006, this subset represented approximately 364,000 U.S. business clients and approximately 22 million U.S. employees working in all private industrial sectors. The data is collected for pay periods that can be interpolated to include the week of the 12th of each month, and processed with statistical methodologies similar to those used by the U.S. Bureau of Labor Statistics to compute employment from its monthly survey of establishments. Due to this processing, this subset is modified to make it indicative of national employment levels; therefore, the resulting employment changes computed for the *ADP National Employment Report* are not representative of changes in ADP's total base of U.S. business clients.

Empirical analysis performed by Macroeconomic Advisers suggests that the *ADP National Employment Report* can be used to develop a forecast of “true” employment that is superior to those resulting from consensus estimates, survey data, or other models of employment that do not incorporate the results of the *ADP Report*.

For a description of the underlying data and the statistical properties of the series, please see “*ADP National Employment Report: Development Methodology*” at <http://ADPEmploymentreport.com/methodology.aspx>.

For a full schedule of future releases, please visit: www.ADPEmploymentreport.com

Media contacts: ADP Public Relations: 973-974-7612
Macroeconomic Advisers: 314-721-4747

Technical information: 314-721-4747
www.ADPEmploymentreport.com

The ADP National Employment Report is a trademark and service mark of ADP of North America, Inc.