



Published on Wednesday, March 30, 2011, 8:15 A.M. ET

March 2011 ADP National Employment Report®

Private-sector employment increased by 201,000 from February to March on a seasonally adjusted basis, according to the latest [ADP National Employment Report](#)® released today. The estimated change of employment from January 2011 to February 2011 was revised down to 208,000 from the previously reported increase of 217,000.

This month's *ADP National Employment Report* removes any remaining doubt that private nonfarm payroll employment accelerated heading into 2011. The increase of 201,000 is in line with the consensus expectation both for today's report and for Friday's jobs report from the Bureau of Labor Statistics.

The average monthly increase in employment over the last four months – December through March – has been 211,000, consistent with a gradual if uneven decline in the unemployment rate. This is almost three times the average monthly gain of 74,000 over the preceding four months of August through November.

According to the *ADP Report*, employment in the service-providing sector rose by 164,000 in March, marking fifteen consecutive months of employment gains. Employment in the goods-producing sector rose 37,000, the fifth consecutive monthly gain. Manufacturing employment rose 37,000, the sixth consecutive monthly gain.

Employment among large businesses, defined as those with 500 or more workers, increased by 17,000 while employment among medium-size businesses, defined as those with between 50 and 499 workers, increased by 82,000. Employment for small businesses, defined as those with fewer than 50 workers, rose 102,000 in March.

In March, construction employment dropped 5,000. The total decline in construction employment since its peak in January 2007 is 2,126,000. Employment in the financial services sector increased 4,000 in March.

For information on the construction sector and use of the *ADP Report*, please visit the methodology section of the *ADP National Employment Report* website at <http://ADPEmploymentreport.com/methodology.aspx>.

**All size data included in the ADP National Employment Report is based on size of payroll. In some cases, small and medium-size payrolls belong to businesses employing more workers than indicated by the size grouping.*

DERIVED FROM ADP PAYROLL DATA

Table 1. Employees on nonfarm private payrolls by selected industry sector and size*

(In thousands)

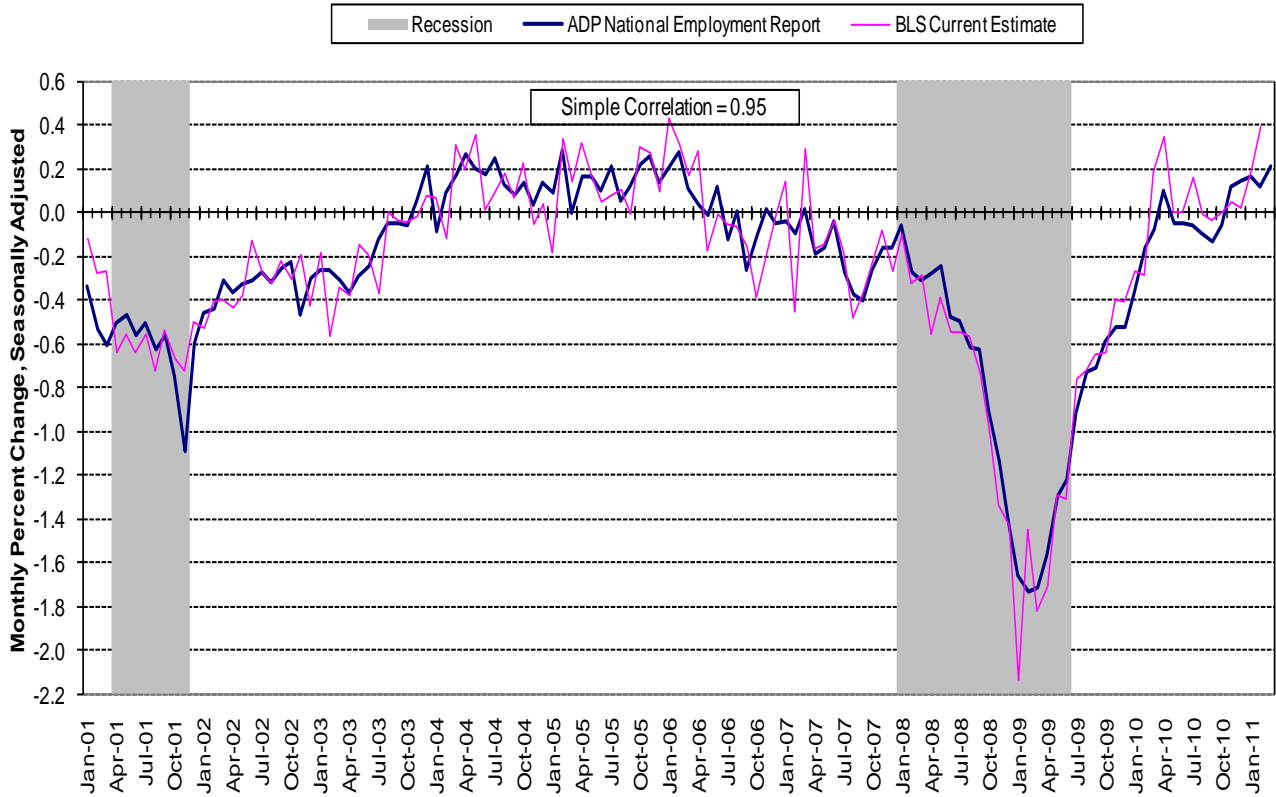
Industry / Size of Payroll	Seasonally Adjusted						Change from: Feb.2011 - Mar.2011p
	Oct. 2010	Nov. 2010	Dec. 2010	Jan. 2011	Feb. 2011p	Mar. 2011p	
Total nonfarm private	107,325	107,447	107,693	107,883	108,091	108,292	201
Small (1-49).....	48,550	48,621	48,722	48,824	48,920	49,022	102
Medium (50-499).....	41,368	41,425	41,552	41,634	41,735	41,817	82
Large (> 499).....	17,407	17,401	17,419	17,425	17,436	17,453	17
Goods-producing	17,641	17,662	17,688	17,718	17,739	17,776	37
Small (1-49).....	6,589	6,596	6,594	6,604	6,609	6,622	13
Medium (50-499).....	7,626	7,643	7,666	7,683	7,702	7,723	21
Large (> 499).....	3,426	3,423	3,428	3,431	3,428	3,431	3
Service-providing	89,684	89,785	90,005	90,165	90,352	90,516	164
Small (1-49).....	41,961	42,025	42,128	42,220	42,311	42,400	89
Medium (50-499).....	33,742	33,782	33,886	33,951	34,033	34,094	61
Large (> 499).....	13,981	13,978	13,991	13,994	14,008	14,022	14
Addendum:							
Manufacturing.....	11,513	11,532	11,561	11,587	11,607	11,644	37

p = preliminary

**All size data included in the ADP National Employment Report is based on size of payroll. In some cases, small and medium-size payrolls belong to businesses employing more workers than indicated by the size grouping.*

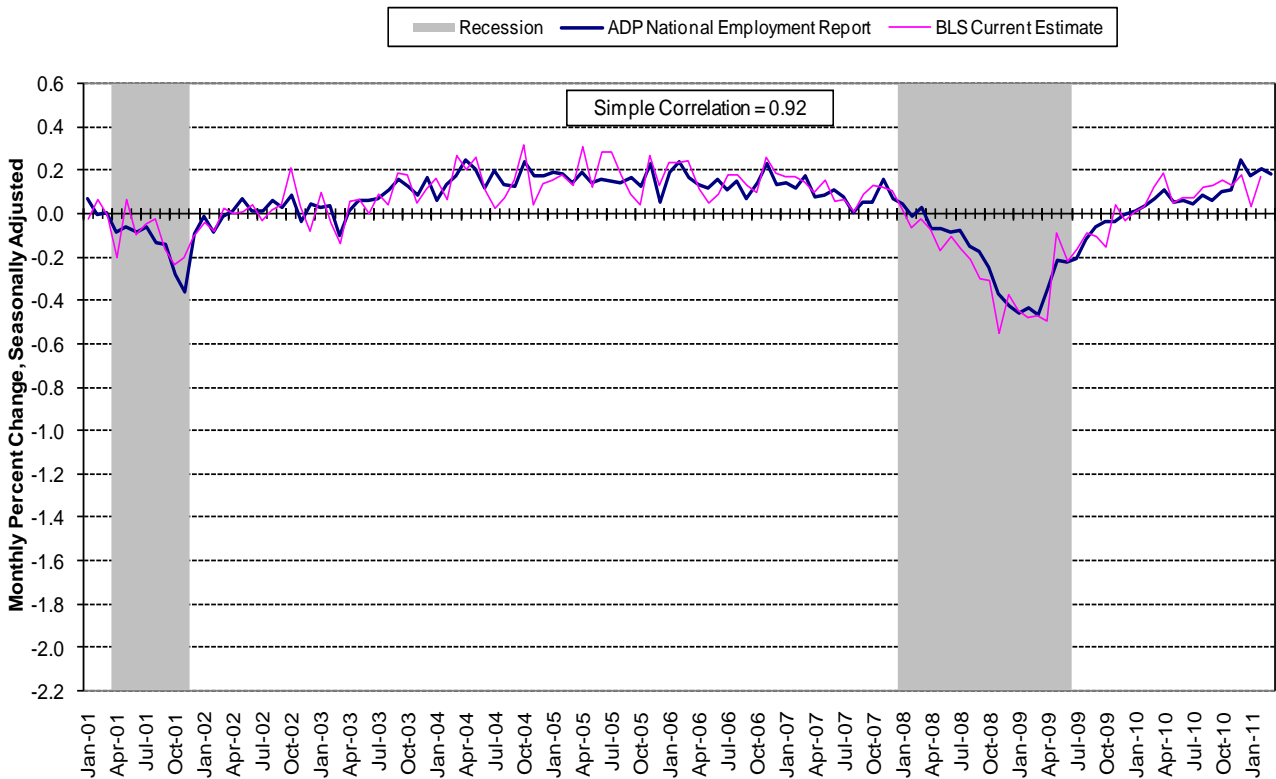
The matched sample used to develop the *ADP National Employment Report* was derived from ADP® data which, during the twelve-month period through June 2010, averaged over 340,000 U.S. business clients and represented over 21 million U.S. employees. This approximately represents the size of the matched sample used this month.

Chart 2. Growth of Private Nonfarm Employment, Goods-Producing Industries



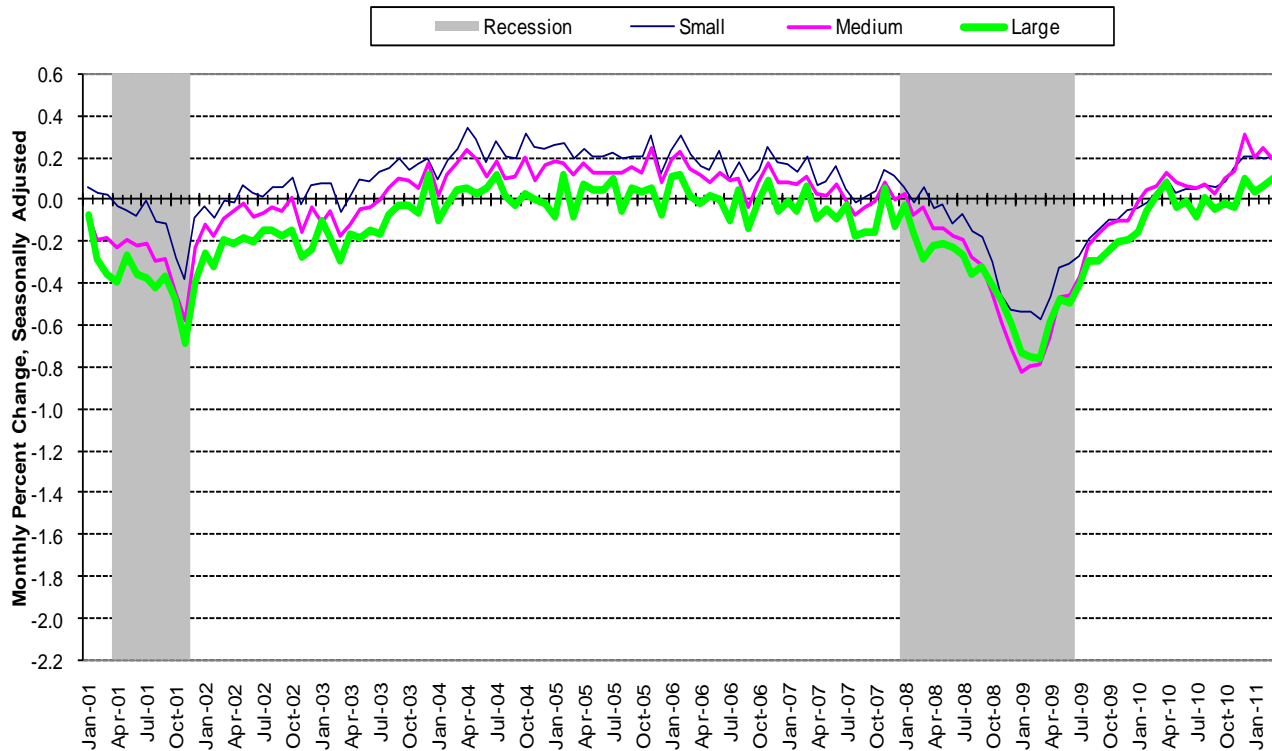
Source: Automatic Data Processing, Inc., Macroeconomic Advisers, LLC., Bureau of Labor Statistics

Chart 3. Growth of Private Nonfarm Employment, Service-Providing Industries



Source: Automatic Data Processing, Inc., Macroeconomic Advisers, LLC., Bureau of Labor Statistics

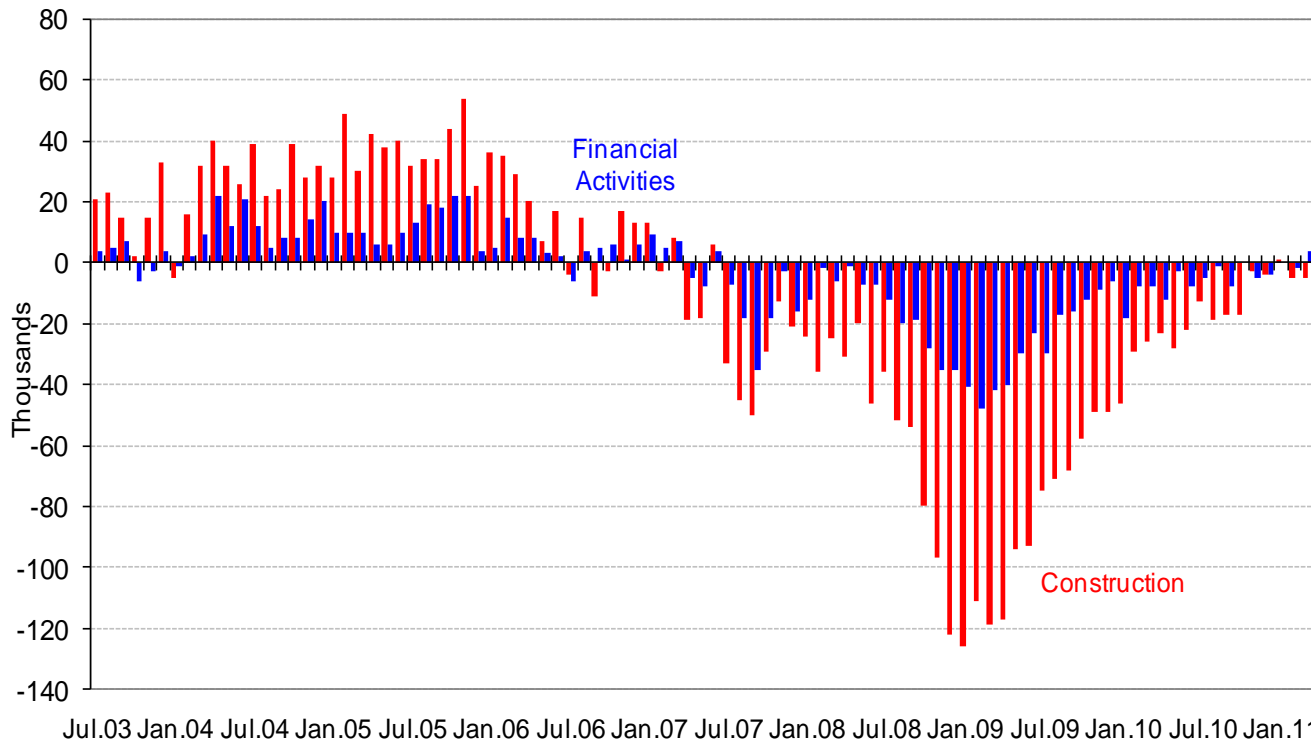
Chart 4. Growth of Private Nonfarm Employment, by Size of Payroll*



Source: Automatic Data Processing, Inc., Macroeconomic Advisers, LLC.

* All size data included in the ADP National Employment Report is based on size of payroll. In some cases, small and medium-size payrolls belong to businesses

Monthly Changes of Employment in Construction and Financial Activities



Source: Automatic Data Processing, Inc., Macroeconomic Advisers, LLC

About the *ADP National Employment Report*[®]

The *ADP National Employment Report*[®], sponsored by ADP[®], was developed and is maintained by Macroeconomic Advisers, LLC. It is a measure of employment derived from an anonymous subset of roughly 500,000 U.S. business clients. During the twelve-month period through June 2010, this subset averaged over 340,000 U.S. business clients and over 21 million U.S. employees working in all private industrial sectors. The *ADP Small Business Report*[®] is a monthly estimate of private nonfarm employment among companies in the United States with 1-49 employees and is a subset of the *ADP National Employment Report*. The data for both reports is collected for pay periods that can be interpolated to include the week of the 12th of each month, and processed with statistical methodologies similar to those used by the U.S. Bureau of Labor Statistics to compute employment from its monthly survey of establishments. Due to this processing, this subset is modified to make it indicative of national employment levels; therefore, the resulting employment changes computed for the *ADP National Employment Report* are not representative of changes in ADP's total base of U.S. business clients.

For a description of the underlying data and the statistical properties of the series, please see “*ADP National Employment Report: Development Methodology*” at <http://ADPEmploymentreport.com/methodology.aspx>.

The April 2011 *ADP National Employment Report* will be released May 4, 2011 at 8:15 AM ET. For a full schedule of future releases, please visit: www.ADPEmploymentreport.com.

Media contacts: ADP Public Relations: 973-974-7612

Macroeconomic Advisers: 314-721-4747

Technical information: 314-721-4747

www.ADPEmploymentreport.com

The ADP Logo, ADP, ADP National Employment Report, and ADP Small Business Report are registered trademarks of ADP, Inc.