



**Wednesday, November 5, 2008, 8:15 A.M. ET**

Nonfarm private employment decreased 157,000 from September to October 2008 on a seasonally adjusted basis, according to the *ADP National Employment Report*<sup>®</sup>. The estimated change in employment from August to September was revised down from a decrease of 8,000 to a decrease of 26,000.

October's *ADP National Employment Report* offers evidence of a labor market that continues to weaken. Note that this month, the *ADP Report* does not reflect the strike of some 27,000 machinists in the aerospace industry during September and October.

This month's employment loss was driven by the goods-producing sector which declined 126,000 during October, its twenty-third consecutive monthly decline. The manufacturing sector marked its twenty-sixth consecutive monthly decline, losing 85,000 jobs. These losses were compounded by an employment decline in the service-providing sector of the economy which fell by 31,000, the first loss in the service-providing sector recorded by the *ADP Report* since November of 2002.

Large businesses, defined as those with 500 or more workers, saw employment decline 41,000, while medium-size companies with between 50 and 499 workers declined 91,000. Employment among small-size businesses, defined as those with fewer than 50 workers, declined 25,000. This is the first outright decline in small business employment reported by the *ADP Report* since November of 2002, and the largest percentage decline since the economy was emerging from recession in early 2002.

In October, construction employment dropped 45,000. This was its twenty-third consecutive monthly decline, and brings the total decline in construction jobs since the peak in August of 2006 to 455,000.

For information on the construction and use of the *ADP Report*, please visit the methodology section of the *ADP National Employment Report* website at <http://www.adpemploymentreport.com/methodology.aspx>.

**DERIVED FROM ADP PAYROLL DATA**

**Table 1. Employees on nonfarm private payrolls by selected industry sector and size**  
(In thousands)

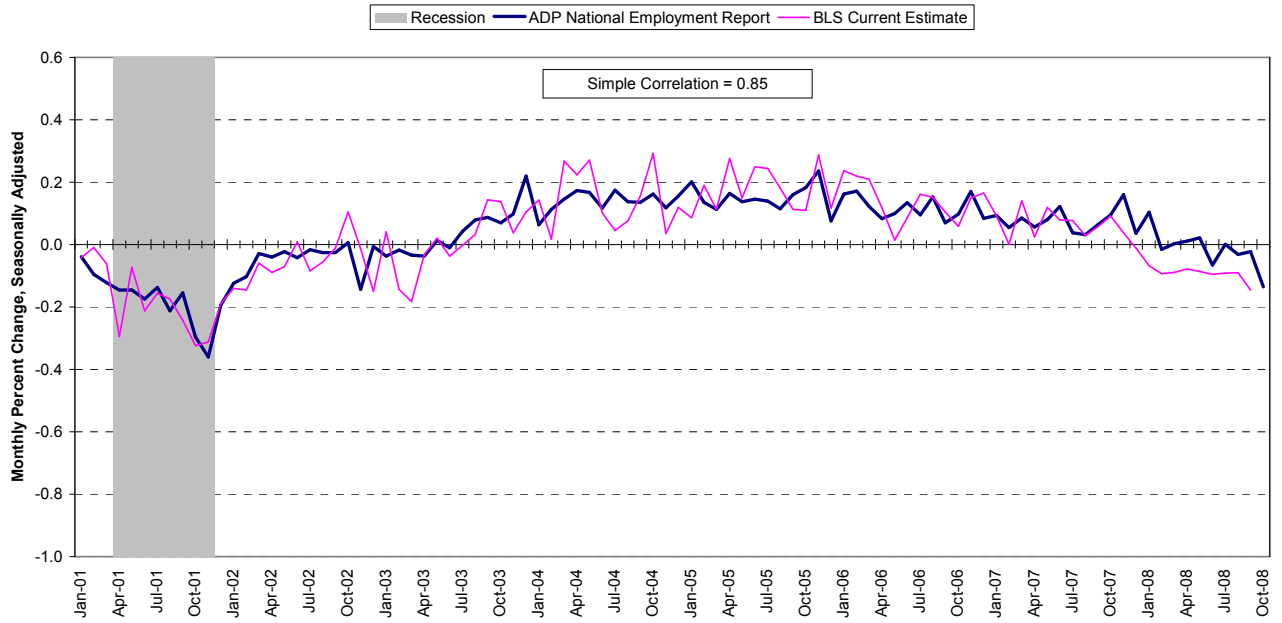
Industry / Size of Payroll	Seasonally Adjusted						Change from: Sep. 2008 - Oct. 2008p
	May. 2008	Jun. 2008	Jul. 2008	Aug. 2008	Sep. 2008	Oct. 2008p	
<b>Total nonfarm private</b> .....	116,094	116,017	116,018	115,981	115,955	115,798	-157
Small (1-49).....	51,249	51,256	51,302	51,319	51,337	51,312	-25
Medium (50-499).....	45,585	45,552	45,542	45,512	45,476	45,385	-91
Large (> 499).....	19,260	19,209	19,174	19,150	19,142	19,101	-41
<b>Goods-producing</b> .....	21,825	21,748	21,679	21,598	21,518	21,392	-126
Small (1-49).....	7,975	7,949	7,942	7,923	7,903	7,867	-36
Medium (50-499).....	9,613	9,586	9,556	9,521	9,478	9,413	-65
Large (> 499).....	4,237	4,213	4,181	4,154	4,137	4,112	-25
<b>Service-providing</b> .....	94,269	94,269	94,339	94,383	94,437	94,406	-31
Small (1-49).....	43,274	43,307	43,360	43,396	43,434	43,445	11
Medium (50-499).....	35,972	35,966	35,986	35,991	35,998	35,972	-26
Large (> 499).....	15,023	14,996	14,993	14,996	15,005	14,989	-16
<b>Addendum:</b>							
Manufacturing.....	13,636	13,591	13,540	13,484	13,431	13,346	-85

p = preliminary

The matched sample used to develop the *ADP National Employment Report* was derived from ADP data which, during the first six months of 2008, averaged approximately 399,000 payrolls representing nearly 24 million U.S. employees. This approximately represents the size of the matched sample used this month.

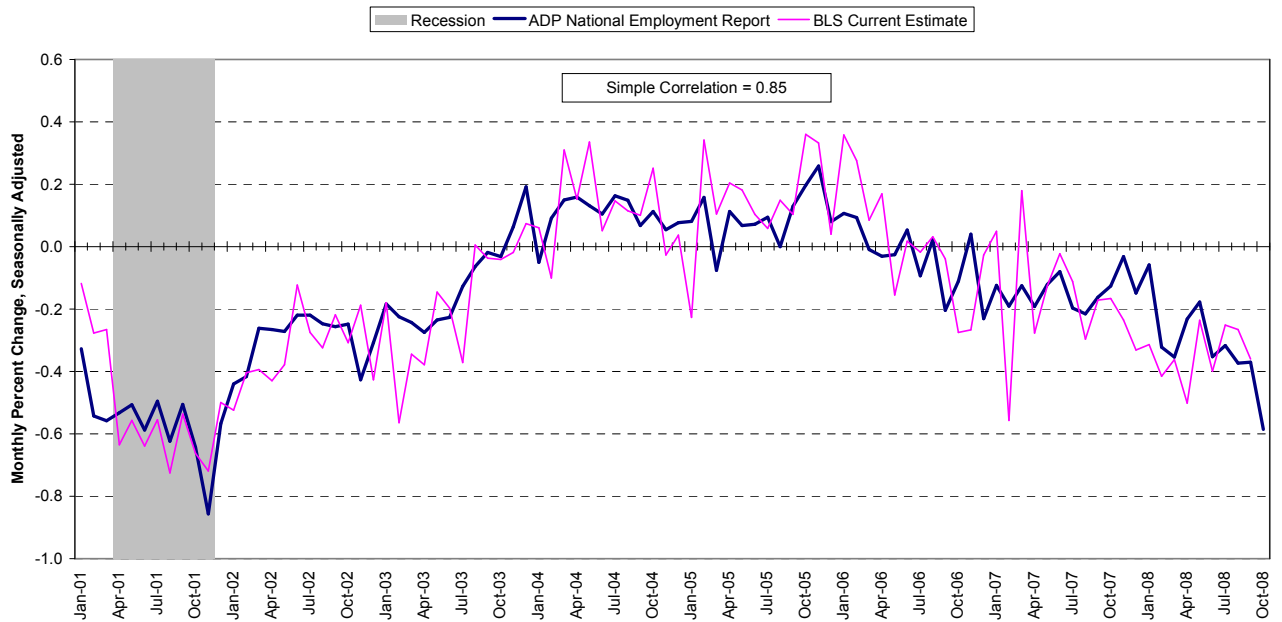
For information on the construction and use of the *ADP Report*, please visit the methodology section of the *ADP National Employment Report* website at <http://www.adpemploymentreport.com/methodology.aspx>

**Chart 1. Growth of Nonfarm Private Employment, All Industries**



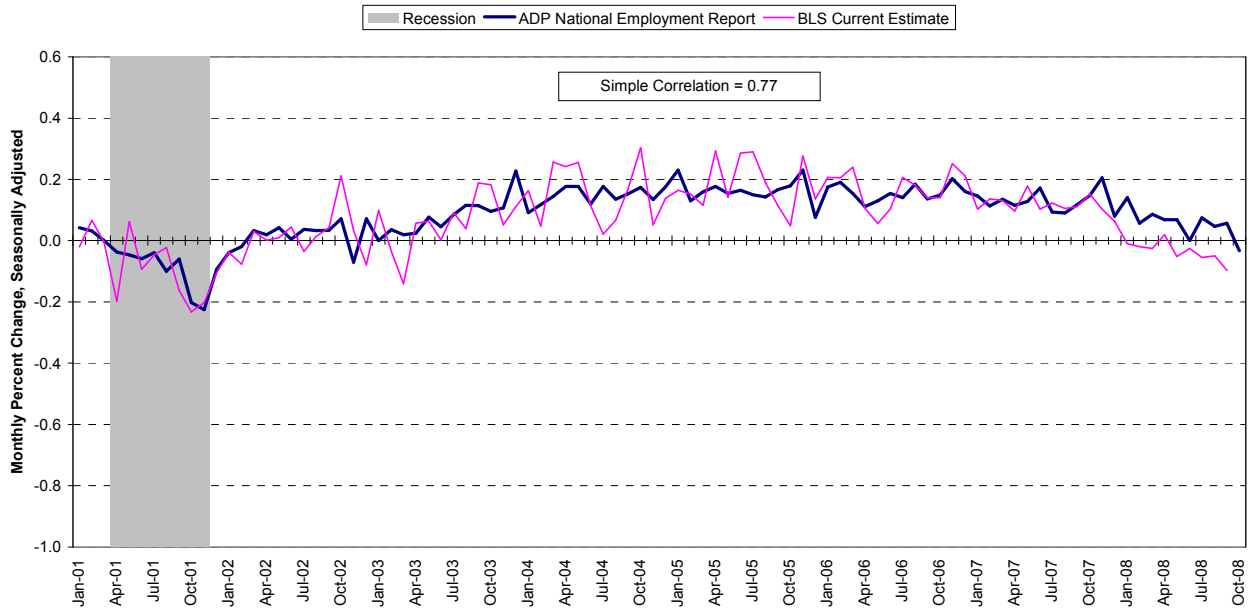
Source: Automatic Data Processing, Inc., Macroeconomic Advisers, LLC., Bureau of Labor Statistics

**Chart 2. Growth of Nonfarm Private Employment, Goods-Producing Industries**



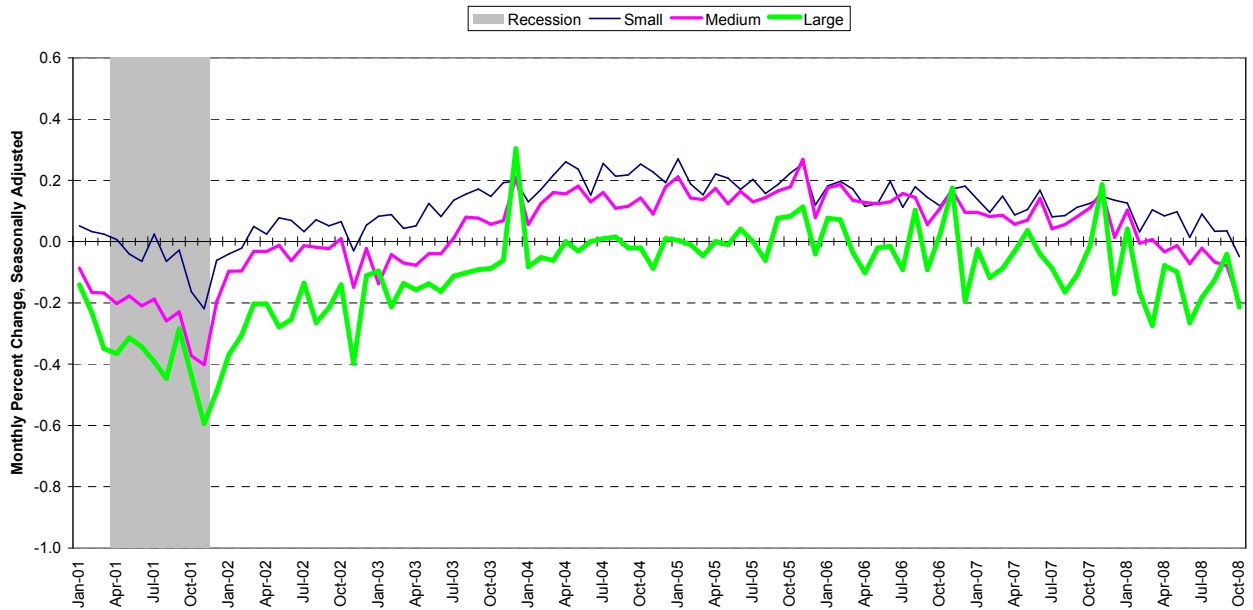
Source: Automatic Data Processing, Inc., Macroeconomic Advisers, LLC., Bureau of Labor Statistics

**Chart 3. Growth of Nonfarm Private Employment, Service-Providing Industries**



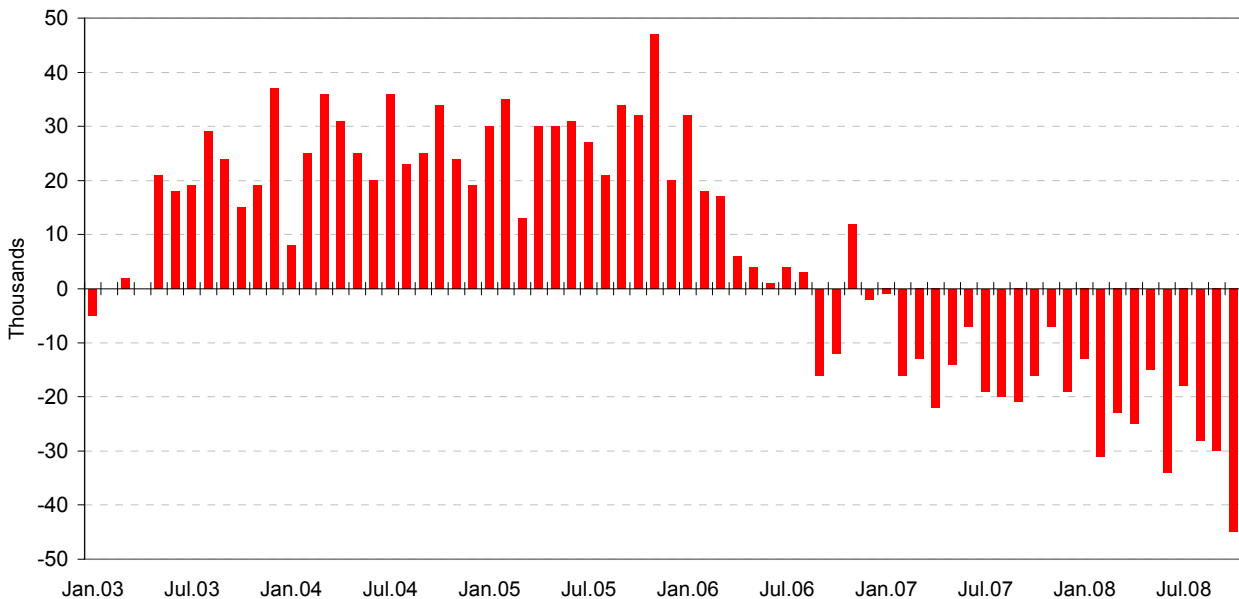
Source: Automatic Data Processing, Inc., Macroeconomic Advisers, LLC., Bureau of Labor Statistics

**Chart 4. Growth of Nonfarm Private Employment, by Size of Payroll**



Source: Automatic Data Processing, Inc., Macroeconomic Advisers, LLC.

**Chart 5. Monthly Changes of Employment in Construction**



Source: Automatic Data Processing, Inc., Macroeconomic Advisers, LLC

### **About the *ADP National Employment Report*<sup>®</sup>**

The *ADP National Employment Report*, sponsored by ADP<sup>®</sup>, was developed and is maintained by Macroeconomic Advisers, LLC. It is a measure of employment derived from an anonymous subset of roughly 500,000 U.S. business clients. During the first six months of 2008, this subset represented approximately 399,000 U.S. business clients representing nearly 24 million U.S. employees working in all private industrial sectors. The data is collected for pay periods that can be interpolated to include the week of the 12<sup>th</sup> of each month, and processed with statistical methodologies similar to those used by the U.S. Bureau of Labor Statistics to compute employment from its monthly survey of establishments. Due to this processing, this subset is modified to make it indicative of national employment levels; therefore, the resulting employment changes computed for the *ADP National Employment Report* are not representative of changes in ADP's total base of U.S. business clients.

Empirical analysis performed by Macroeconomic Advisers suggests that the *ADP National Employment Report* can be used to develop a forecast of "true" employment that is superior to those resulting from consensus estimates, survey data, or other models of employment that do not incorporate the results of the *ADP Report*.

For a description of the underlying data and the statistical properties of the series, please see "*ADP National Employment Report: Development Methodology*" at <http://www.adpemploymentreport.com/methodology.aspx>.

For a full schedule of future releases, please visit: [www.adpemploymentreport.com](http://www.adpemploymentreport.com)

Media contacts: ADP Public Relations: 973-974-7612  
Macroeconomic Advisers: 314-721-4747

Technical information: 314-721-4747  
[www.adpemploymentreport.com](http://www.adpemploymentreport.com)

*The ADP National Employment Report is a registered trademark of ADP of North America, Inc.*