



Wednesday, October 1, 2008, 8:15 A.M. ET

Nonfarm private employment decreased 8,000 from August to September 2008 on a seasonally adjusted basis, according to the *ADP National Employment Report*[®]. The estimated change in employment from July to August was revised down from a decrease of 33,000 to a decrease of 37,000.

September's *ADP National Employment Report* continues to offer evidence of a weak labor market. Note that this month, the *ADP Report* does not reflect two special factors that might have further depressed employment in September. These are the strike of some 27,000 machinists against Boeing, and job losses related to hurricanes that struck the Gulf Coast.

This month's employment loss was driven by the goods-producing sector which declined 72,000 during September, its twenty-second consecutive monthly decline. The manufacturing sector marked its twenty-fifth consecutive monthly decline, losing 48,000 jobs. These losses were somewhat offset by employment gains in the service-providing sector of the economy which advanced by 64,000.

Large businesses, defined as those with 500 or more workers, saw employment decline 6,000, while medium-size companies with between 50 and 499 workers declined 30,000. Employment among small-size businesses, defined as those with fewer than 50 workers, advanced a moderate 28,000 during the month, after posting an even weaker gain of 17,000 in August.

Two sectors of the economy hit hardest by recent problems in mortgage markets have been residential construction and financial activities related to home sales and mortgage lending. Today's report suggests no lessening of the recent strain on employment in these industries. In September, construction employment dropped 29,000. This was its twenty-second consecutive monthly decline, and brings the total decline in construction jobs since the peak in August of 2006 to 409,000. Employment in financial activities advanced just 4,000 during the month.

For information on the construction and use of the *ADP Report*, please visit the methodology section of the *ADP National Employment Report* website at <http://ADPEmploymentreport.com/methodology.aspx>.

DERIVED FROM ADP PAYROLL DATA

Table 1. Employees on nonfarm private payrolls by selected industry sector and size
(In thousands)

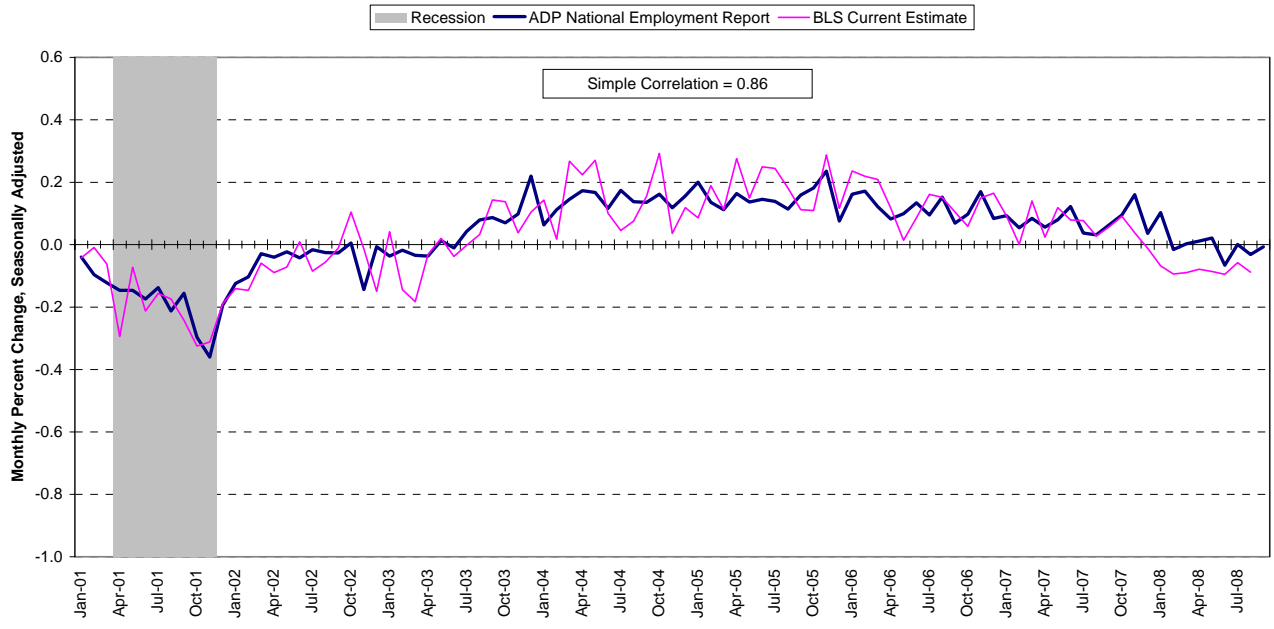
Industry / Size of Payroll	Seasonally Adjusted						Change from: Aug. 2008 - Sep. 2008p
	Apr. 2008	May. 2008	Jun. 2008	Jul. 2008	Aug. 2008	Sep. 2008p	
Total nonfarm private	116,069	116,094	116,017	116,018	115,981	115,973	-8
Small (1-49).....	51,199	51,249	51,256	51,302	51,319	51,347	28
Medium (50-499).....	45,591	45,585	45,552	45,542	45,512	45,482	-30
Large (> 499).....	19,279	19,260	19,209	19,174	19,150	19,144	-6
Goods-producing	21,864	21,825	21,748	21,679	21,598	21,526	-72
Small (1-49).....	7,978	7,975	7,949	7,942	7,923	7,907	-16
Medium (50-499).....	9,635	9,613	9,586	9,556	9,521	9,481	-40
Large (> 499).....	4,251	4,237	4,213	4,181	4,154	4,138	-16
Service-providing	94,205	94,269	94,269	94,339	94,383	94,447	64
Small (1-49).....	43,221	43,274	43,307	43,360	43,396	43,440	44
Medium (50-499).....	35,956	35,972	35,966	35,986	35,991	36,001	10
Large (> 499).....	15,028	15,023	14,996	14,993	14,996	15,006	10
Addendum:							
Manufacturing.....	13,663	13,636	13,591	13,540	13,484	13,436	-48

p = preliminary

The matched sample used to develop the *ADP National Employment Report* was derived from ADP data which, during the first six months of 2008, averaged approximately 399,000 payrolls representing nearly 24 million U.S. employees. This approximately represents the size of the matched sample used this month.

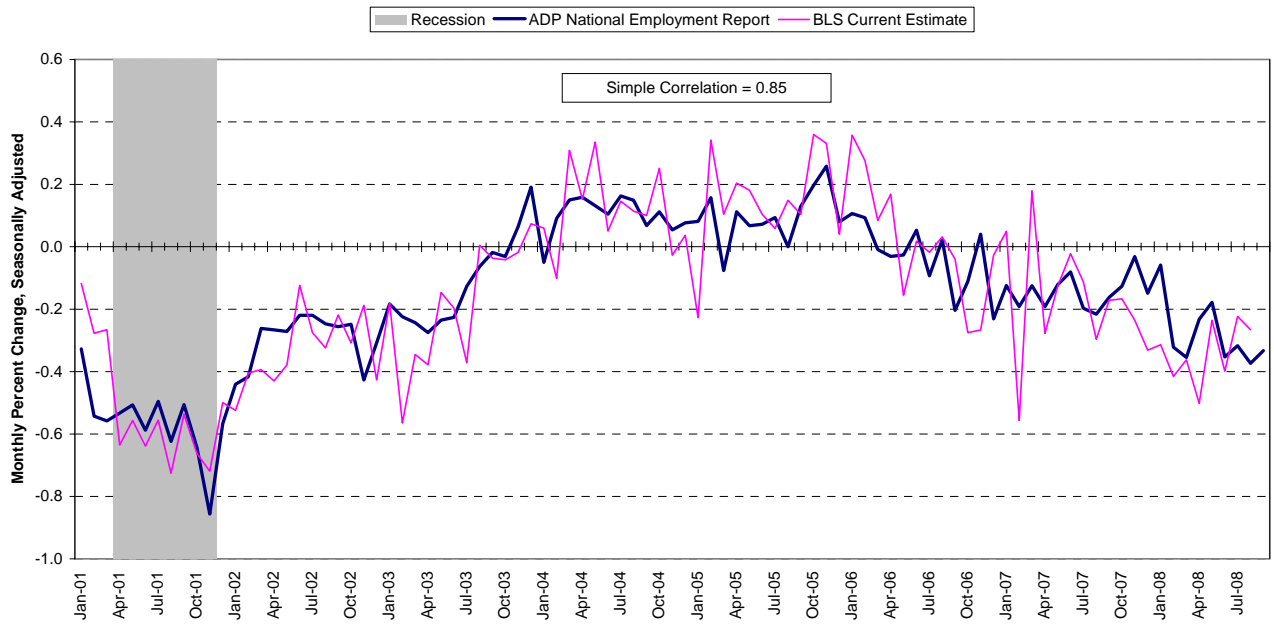
For information on the construction and use of the *ADP Report*, please visit the methodology section of the *ADP National Employment Report* website at <http://ADPEmploymentreport.com/methodology.aspx>

Chart 1. Growth of Nonfarm Private Employment, All Industries



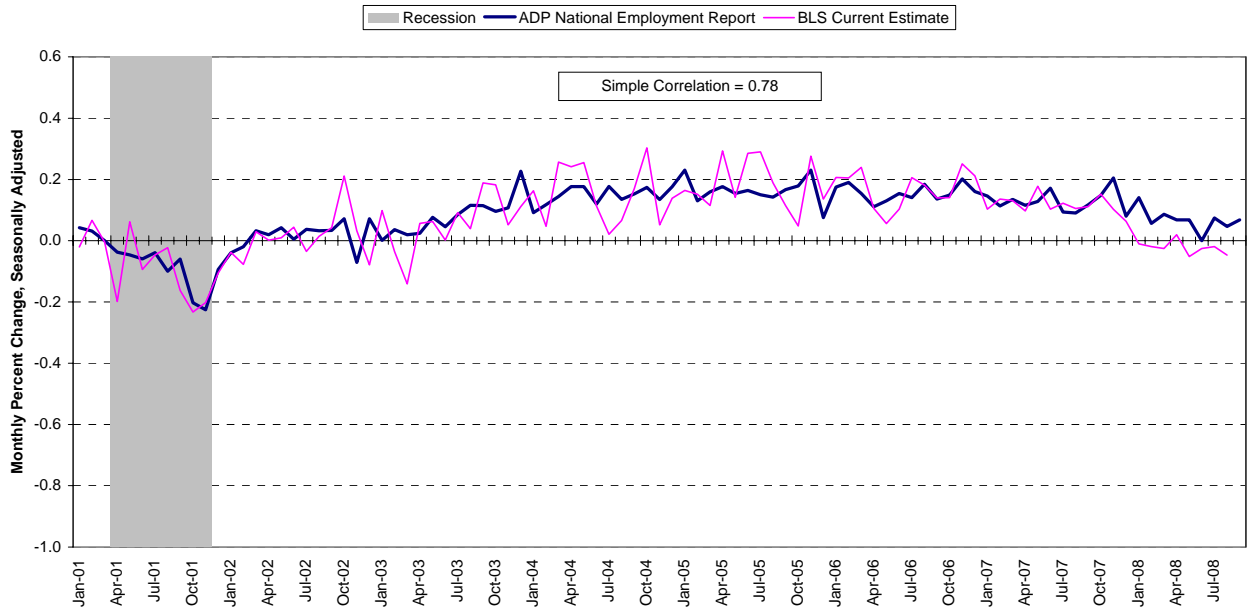
Source: Automatic Data Processing, Inc., Macroeconomic Advisers, LLC., Bureau of Labor Statistics

Chart 2. Growth of Nonfarm Private Employment, Goods-Producing Industries



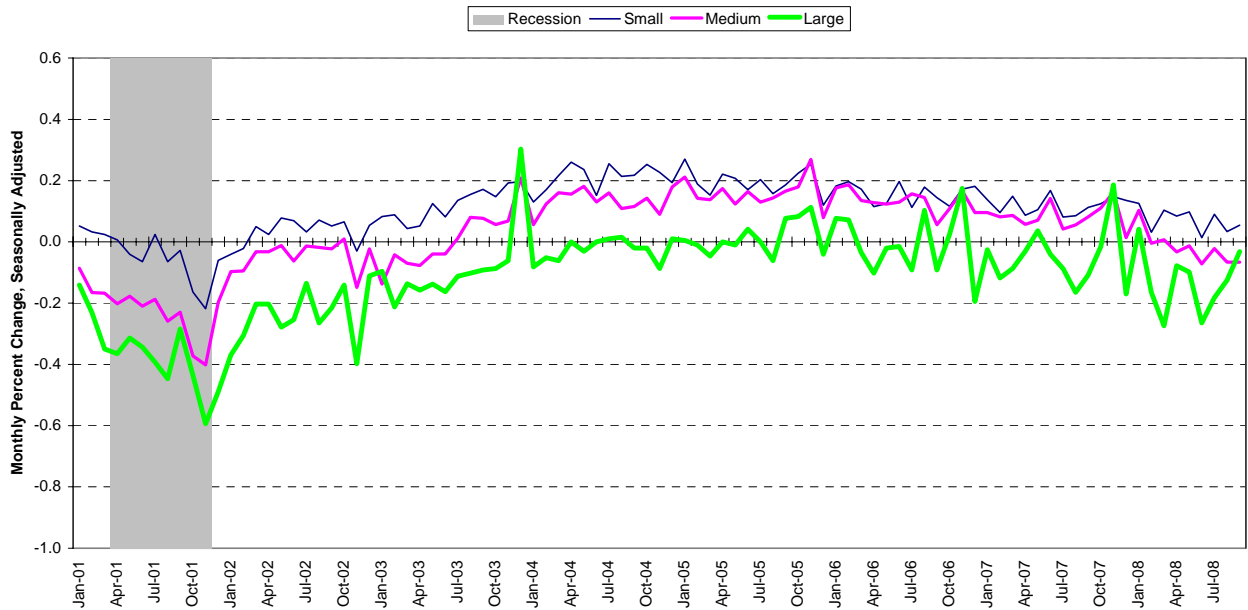
Source: Automatic Data Processing, Inc., Macroeconomic Advisers, LLC., Bureau of Labor Statistics

Chart 3. Growth of Nonfarm Private Employment, Service-Providing Industries



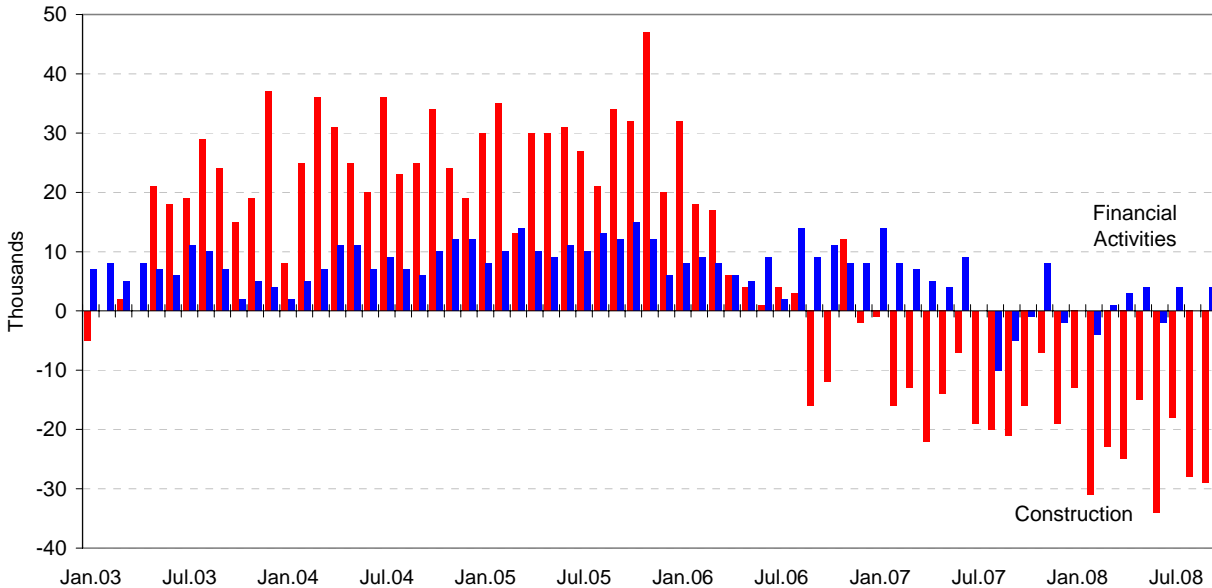
Source: Automatic Data Processing, Inc., Macroeconomic Advisers, LLC., Bureau of Labor Statistics

Chart 4. Growth of Nonfarm Private Employment, by Size of Payroll



Source: Automatic Data Processing, Inc., Macroeconomic Advisers, LLC.

Chart 5. Monthly Changes of Employment in Construction and Financial Activities



Source: Automatic Data Processing, Inc., Macroeconomic Advisers, LLC

About the *ADP National Employment Report*[®]

The *ADP National Employment Report*, sponsored by ADP[®], was developed and is maintained by Macroeconomic Advisers, LLC. It is a measure of employment derived from an anonymous subset of roughly 500,000 U.S. business clients. During the first six months of 2008, this subset represented approximately 399,000 U.S. business clients representing nearly 24 million U.S. employees working in all private industrial sectors. The data is collected for pay periods that can be interpolated to include the week of the 12th of each month, and processed with statistical methodologies similar to those used by the U.S. Bureau of Labor Statistics to compute employment from its monthly survey of establishments. Due to this processing, this subset is modified to make it indicative of national employment levels; therefore, the resulting employment changes computed for the *ADP National Employment Report* are not representative of changes in ADP's total base of U.S. business clients.

Empirical analysis performed by Macroeconomic Advisers suggests that the *ADP National Employment Report* can be used to develop a forecast of "true" employment that is superior to those resulting from consensus estimates, survey data, or other models of employment that do not incorporate the results of the *ADP Report*.

For a description of the underlying data and the statistical properties of the series, please see "*ADP National Employment Report: Development Methodology*" at <http://ADPEmploymentreport.com/methodology.aspx>.

For a full schedule of future releases, please visit: www.ADPEmploymentreport.com

Media contacts: ADP Public Relations: 973-974-7612
Macroeconomic Advisers: 314-721-4747

Technical information: 314-721-4747
www.ADPemploymentreport.com

The ADP National Employment Report is a registered trademark of ADP of North America, Inc.