



Wednesday, April 30, 2008, 8:15 A.M. ET

Nonfarm private employment increased 10,000 from March to April 2008 on a seasonally adjusted basis, according to the *ADP National Employment Report*[™]. The estimated change in employment from February to March was revised down from an increase of 8,000 to an increase of 3,000.

Though April's estimate for a small increase in employment is above consensus forecasts of an outright decline, it nevertheless suggests that a sharp deceleration of employment continues.

Employment in the service-providing sector of the economy grew 64,000, while employment in the goods-producing sector declined 54,000, the seventeenth consecutive monthly decline. Manufacturing employment fell 26,000 in April and marked the twentieth consecutive monthly decline.

Large businesses, defined as those with 500 or more workers, saw employment decline 18,000, while medium-size companies with between 50 and 499 workers declined by 14,000. Conversely, employment among small-size businesses, defined as those with fewer than 50 workers, advanced 42,000 during the month.

Two sectors of the economy hit hardest by recent problems in mortgage markets have been residential construction and financial activities related to home sales and mortgage lending. In April, construction employment fell another 28,000. This is the seventeenth consecutive monthly decline, bringing the total decline in construction jobs since the peak in August 2006 to 288,000. Employment in the financial activities sector advanced just 2,000 for the month.

For information on the construction and use of the *ADP Report*, please visit the methodology section of the *ADP National Employment Report* website at <http://ADPEmploymentreport.com/methodology.aspx>.



National Employment Report

DERIVED FROM ADP PAYROLL DATA

Table 1. Employees on nonfarm private payrolls by selected industry sector and size
(In thousands)

Industry / Size of Payroll	Seasonally Adjusted						Change from: Mar. 2008 - Apr. 2008p
	Nov. 2007	Dec. 2007	Jan. 2008	Feb. 2008	Mar. 2008	Apr. 2008p	
Total nonfarm private	115,910	115,952	116,071	116,053	116,056	116,066	10
Small (1-49).....	50,954	51,023	51,087	51,103	51,156	51,198	42
Medium (50-499).....	45,552	45,558	45,605	45,603	45,606	45,592	-14
Large (> 499).....	19,404	19,371	19,379	19,347	19,294	19,276	-18
Goods-producing	22,110	22,077	22,064	21,993	21,915	21,861	-54
Small (1-49).....	8,024	8,024	8,020	7,999	7,990	7,976	-14
Medium (50-499).....	9,756	9,725	9,716	9,688	9,663	9,634	-29
Large (> 499).....	4,330	4,328	4,328	4,306	4,262	4,251	-11
Service-providing	93,800	93,875	94,007	94,060	94,141	94,205	64
Small (1-49).....	42,930	42,999	43,067	43,104	43,166	43,222	56
Medium (50-499).....	35,796	35,833	35,889	35,915	35,943	35,958	15
Large (> 499).....	15,074	15,043	15,051	15,041	15,032	15,025	-7
Addendum:							
Manufacturing.....	13,808	13,792	13,789	13,748	13,690	13,664	-26

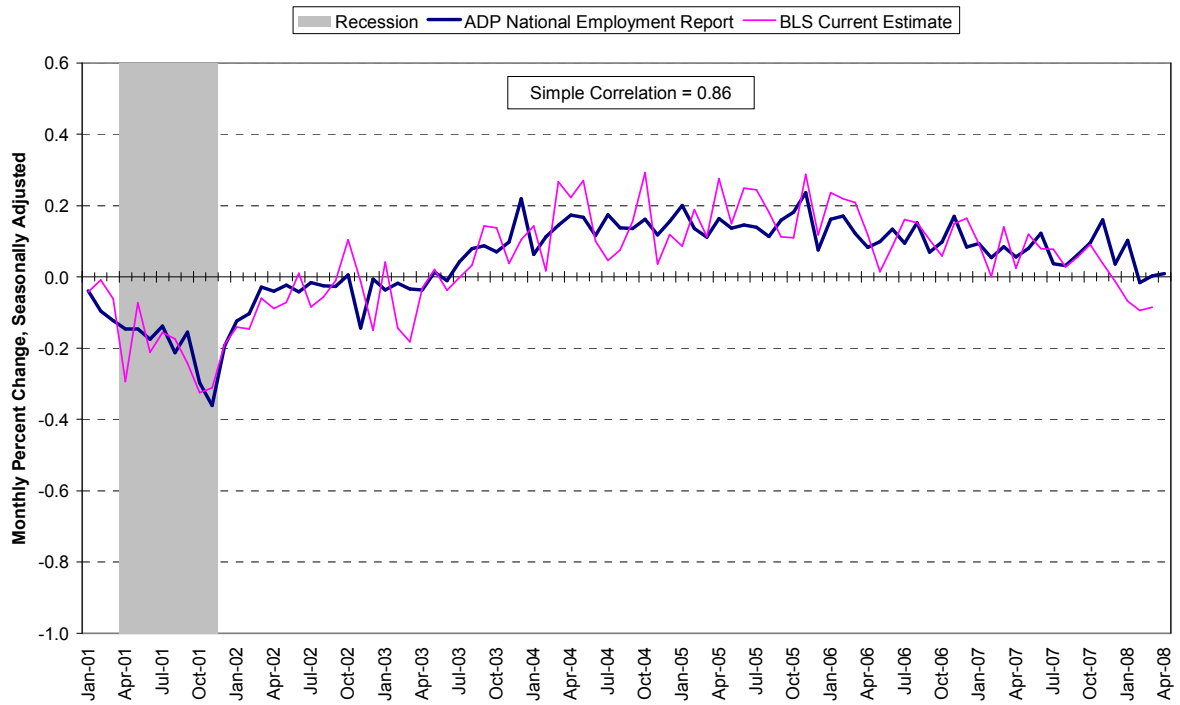
p = preliminary

The matched sample used to develop the *ADP National Employment Report* was derived from ADP data which, during the last six months of 2007, averaged approximately 392,000 payrolls representing nearly 24 million U.S. employees. This approximately represents the size of the matched sample used this month.

For information on the construction and use of the *ADP Report*, please visit the methodology section of the *ADP National Employment Report* website at <http://ADPEmploymentreport.com/methodology.aspx>

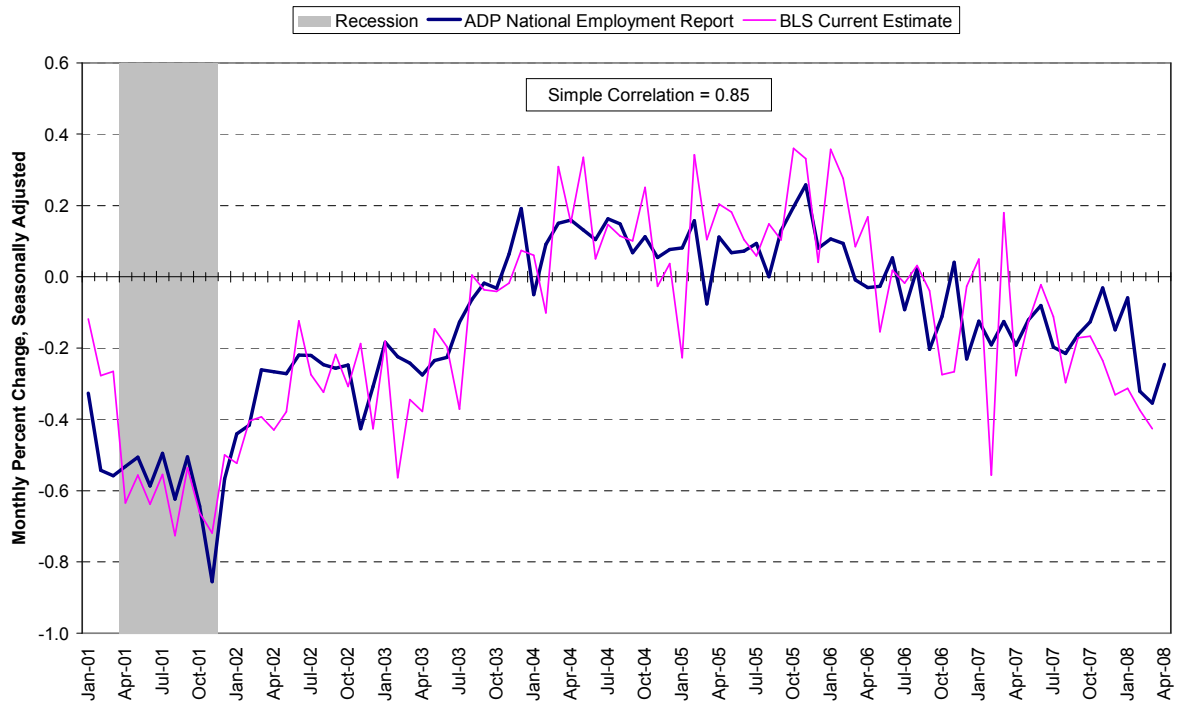


Chart 1. Growth of Nonfarm Private Employment, All Industries



Source: Automatic Data Processing, Inc., Macroeconomic Advisers, LLC., Bureau of Labor Statistics

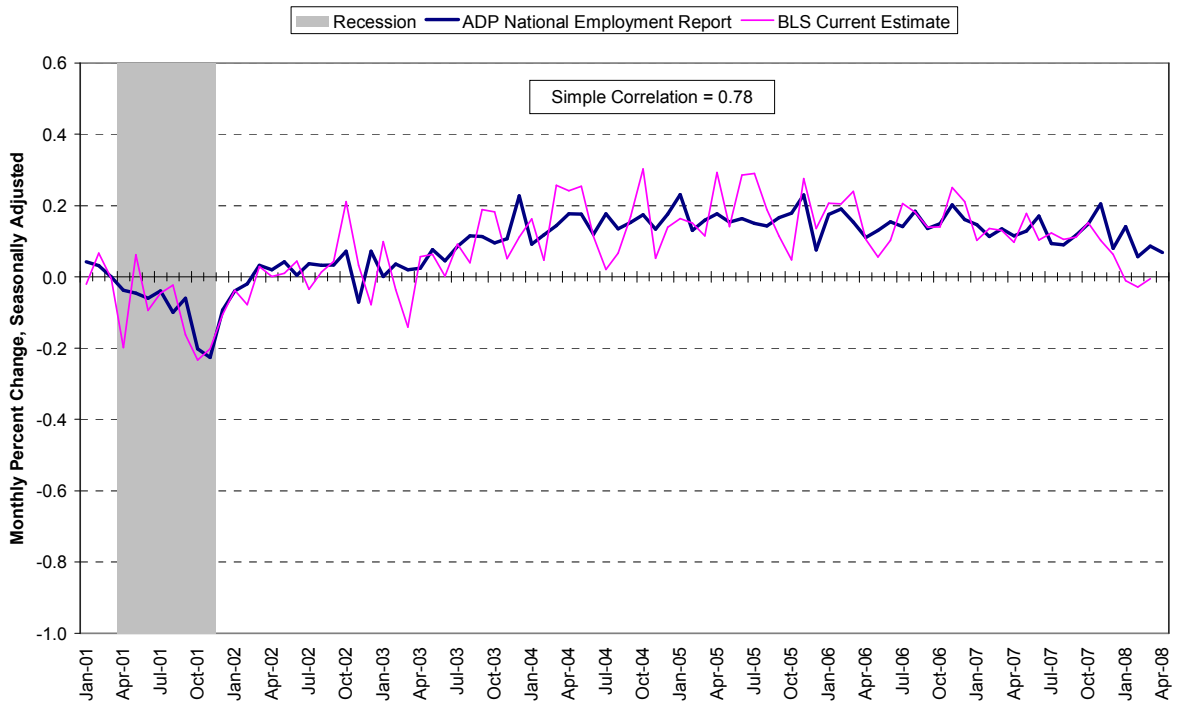
Chart 2. Growth of Nonfarm Private Employment, Goods-Producing Industries



Source: Automatic Data Processing, Inc., Macroeconomic Advisers, LLC., Bureau of Labor Statistics

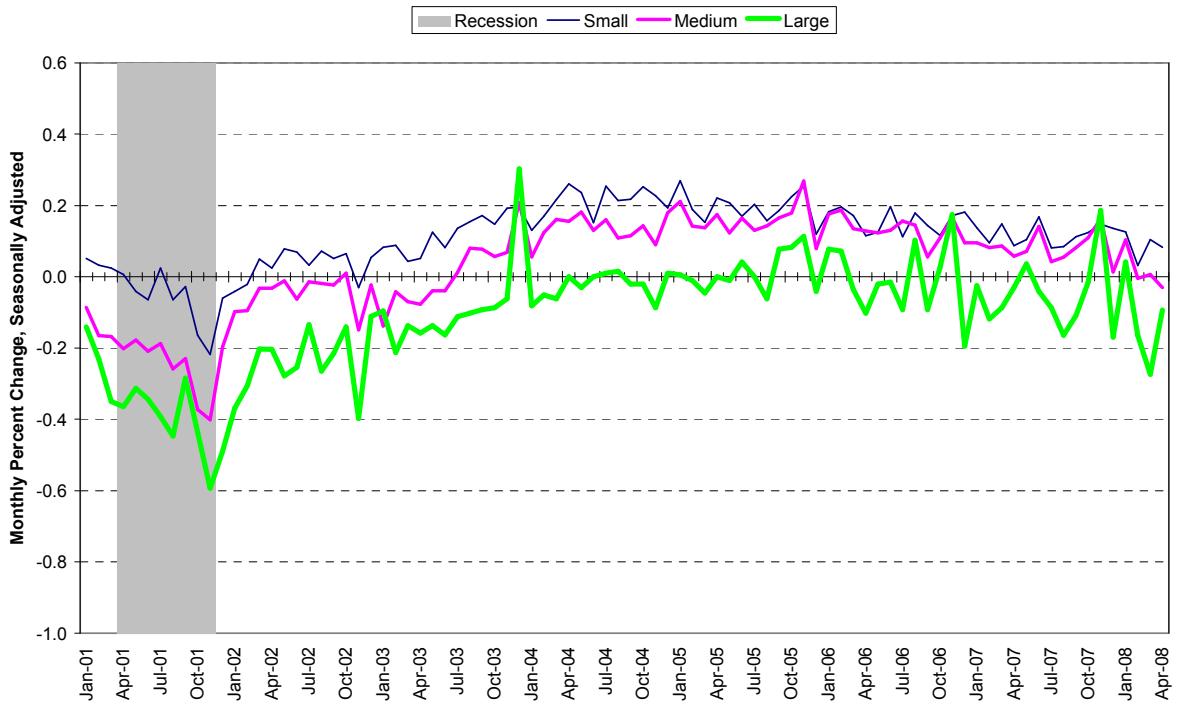


Chart 3. Growth of Nonfarm Private Employment, Service-Providing Industries



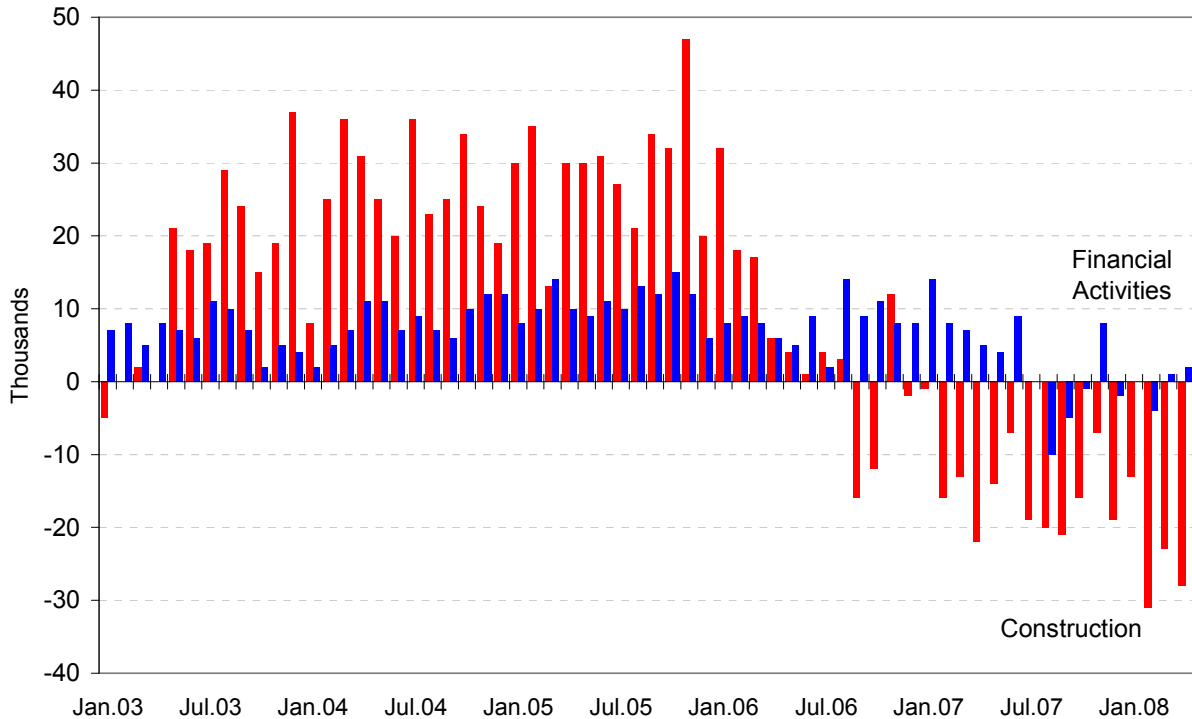
Source: Automatic Data Processing, Inc., Macroeconomic Advisers, LLC., Bureau of Labor Statistics

Chart 4. Growth of Nonfarm Private Employment, by Size of Payroll



Source: Automatic Data Processing, Inc., Macroeconomic Advisers, LLC.

Chart 5. Monthly Changes of Employment in Construction and Financial Activities



Source: Automatic Data Processing, Inc., Macroeconomic Advisers, LLC

About the *ADP National Employment Report*SM

The *ADP National Employment Report*, sponsored by ADP®, was developed and is maintained by Macroeconomic Advisers, LLC. It is a measure of employment derived from an anonymous subset of roughly 500,000 U.S. business clients. During the last six months of 2007, this subset represented approximately 392,000 U.S. business clients representing nearly 24 million U.S. employees working in all private industrial sectors. The data is collected for pay periods that can be interpolated to include the week of the 12th of each month, and processed with statistical methodologies similar to those used by the U.S. Bureau of Labor Statistics to compute employment from its monthly survey of establishments. Due to this processing, this subset is modified to make it indicative of national employment levels; therefore, the resulting employment changes computed for the *ADP National Employment Report* are not representative of changes in ADP's total base of U.S. business clients.

Empirical analysis performed by Macroeconomic Advisers suggests that the *ADP National Employment Report* can be used to develop a forecast of “true” employment that is superior to those resulting from consensus estimates, survey data, or other models of employment that do not incorporate the results of the *ADP Report*.

For a description of the underlying data and the statistical properties of the series, please see “*ADP National Employment Report: Development Methodology*” at <http://ADPEmploymentreport.com/methodology.aspx>.



For a full schedule of future releases, please visit: www.ADPemploymentreport.com

Media contacts: ADP Public Relations: 973-974-7612

Macroeconomic Advisers: 314-721-4747

Technical information: 314-721-4747

www.ADPemploymentreport.com

The ADP National Employment Report is a trademark and service mark of ADP of North America, Inc.