



Published on Wednesday, May 4, 2011, 8:15 A.M. ET

April 2011 ADP National Employment Report®

Employment in the nonfarm private business sector rose 179,000 from March to April on a seasonally adjusted basis, according to the latest [ADP National Employment Report](#)® released today. The estimated change of employment from February 2011 to March 2011 was revised up to 207,000 from the previously reported increase of 201,000.

Today's *ADP National Employment Report* shows that labor market conditions continued to improve in April, but only at a moderate pace. The increase of 179,000 is close to consensus expectations both for today's report and for Friday's jobs report from the U.S. Bureau of Labor Statistics.

While employment accelerated sharply around the turn of the year, the monthly gains have been holding fairly steady around 200,000 since then. Employment growth at this pace is consistent with only modest declines in the unemployment rate.

April's *ADP Report* estimates employment in the service-providing sector rose by 138,000, marking 16 consecutive months of employment gains. Employment in the goods-producing sector rose 41,000, the sixth consecutive monthly gain, while manufacturing employment rose 25,000, the seventh consecutive monthly gain.

Employment among large businesses, defined as those with 500 or more workers, increased by 11,000, while employment among medium-size businesses, defined as those with between 50 and 499 workers, increased by 84,000. Employment for small businesses, defined as those with fewer than 50 workers, rose 84,000 in April.*

In April, employment in the construction industry increased 9,000, only the second monthly increase since June 2007. Since December 2010, however, construction employment has, on balance, risen, suggesting that finally employment in this sector has bottomed out. The total decrease in construction employment since its peak in January 2007 is 2,115,000.

Employment in the financial services sector increased 4,000 in April.

For information on the construction sector and use of the *ADP Report*, please visit the methodology section of the *ADP National Employment Report* website at <http://ADPEmploymentreport.com/methodology.aspx>.

* All size data included in the *ADP National Employment Report* is based on size of payroll. In some cases, small and medium-size payrolls belong to businesses employing more workers than indicated by the size grouping.

DERIVED FROM ADP PAYROLL DATA

Table 1. Employees on nonfarm private payrolls by selected industry sector and size*
(In thousands)

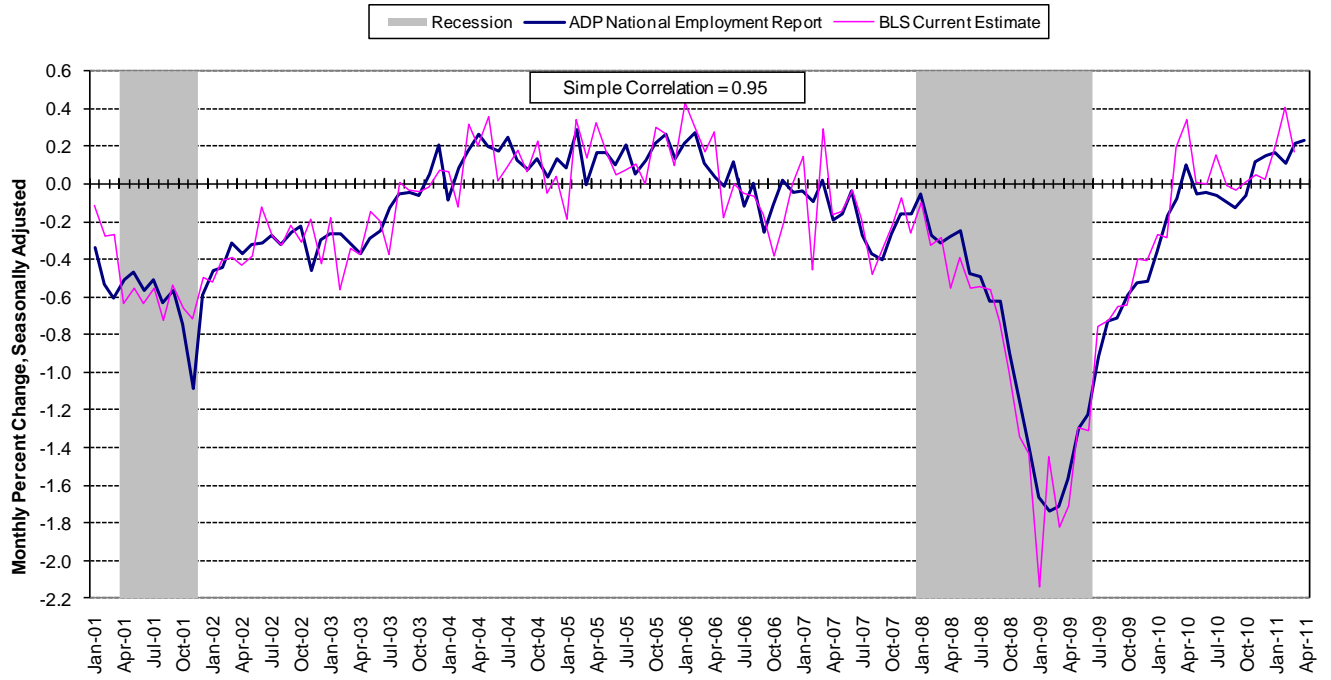
Industry / Size of Payroll	Seasonally Adjusted						Change from: Mar.2011 - Apr.2011p
	Nov. 2010	Dec. 2010	Jan. 2011	Feb. 2011	Mar. 2011p	Apr. 2011p	
Total nonfarm private	107,447	107,693	107,883	108,088	108,295	108,474	179
Small (1-49).....	48,621	48,722	48,824	48,920	49,020	49,104	84
Medium (50-499).....	41,425	41,552	41,634	41,734	41,819	41,903	84
Large (> 499).....	17,401	17,419	17,425	17,434	17,456	17,467	11
Goods-producing	17,662	17,688	17,718	17,738	17,776	17,817	41
Small (1-49).....	6,596	6,594	6,604	6,609	6,620	6,634	14
Medium (50-499).....	7,643	7,666	7,683	7,703	7,724	7,750	26
Large (> 499).....	3,423	3,428	3,431	3,426	3,432	3,433	1
Service-providing	89,785	90,005	90,165	90,350	90,519	90,657	138
Small (1-49).....	42,025	42,128	42,220	42,311	42,400	42,470	70
Medium (50-499).....	33,782	33,886	33,951	34,031	34,095	34,153	58
Large (> 499).....	13,978	13,991	13,994	14,008	14,024	14,034	10
Addendum:							
Manufacturing.....	11,532	11,561	11,587	11,605	11,640	11,665	25

p = preliminary

* All size data included in the ADP National Employment Report is based on size of payroll. In some cases, small and medium-size payrolls belong to businesses employing more workers than indicated by the size grouping.

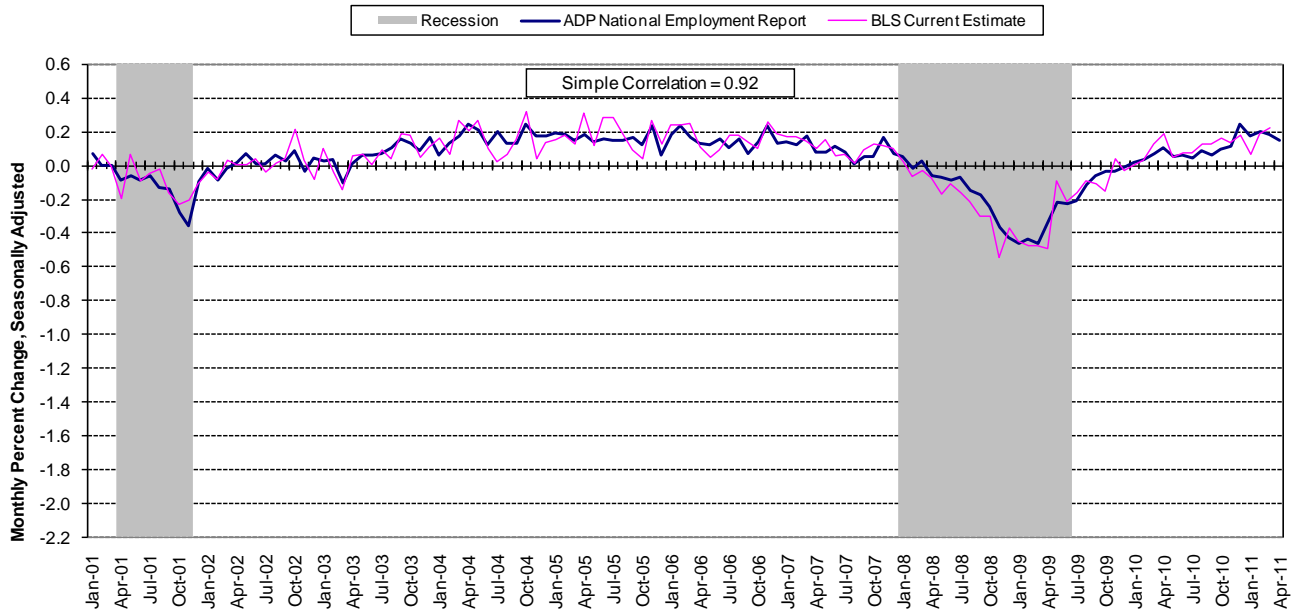
The matched sample used to develop the *ADP National Employment Report* was derived from ADP® data which, during the twelve-month period through June 2010, averaged over 340,000 U.S. business clients and represented over 21 million U.S. employees. This approximately represents the size of the matched sample used this month.

Chart 2. Growth of Private Nonfarm Employment, Goods-Producing Industries



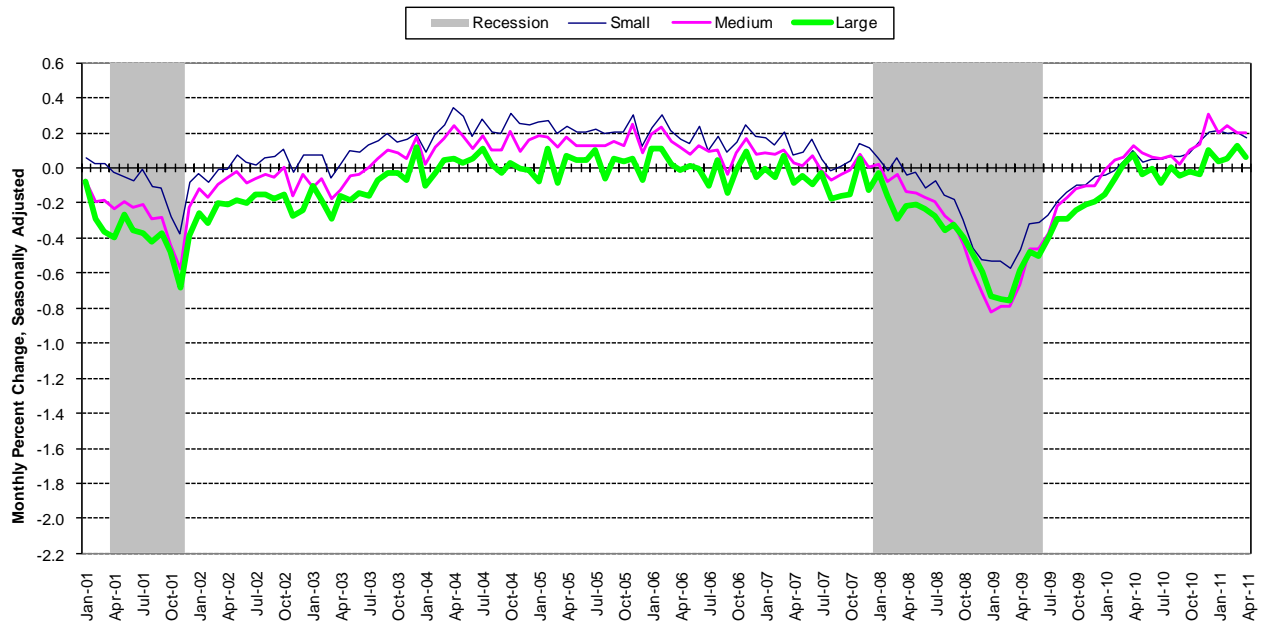
Source: Automatic Data Processing, Inc., Macroeconomic Advisers, LLC., Bureau of Labor Statistics

Chart 3. Growth of Private Nonfarm Employment, Service-Providing Industries



Source: Automatic Data Processing, Inc., Macroeconomic Advisers, LLC., Bureau of Labor Statistics

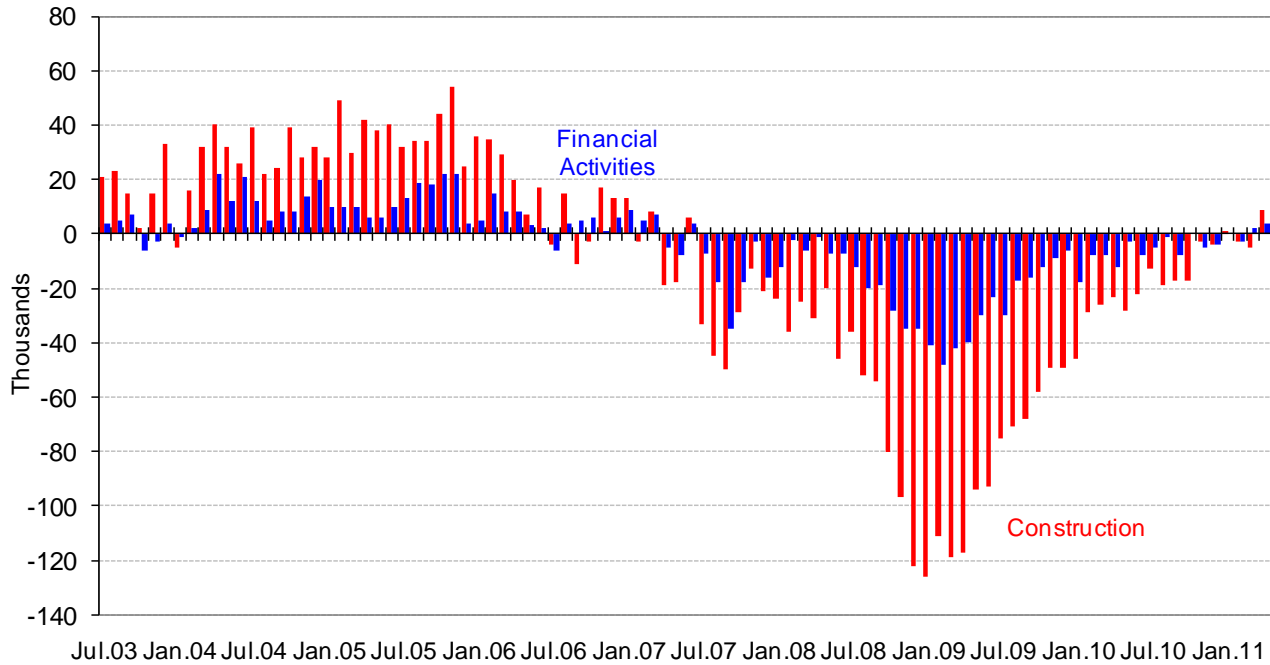
Chart 4. Growth of Private Nonfarm Employment, by Size of Payroll*



Source: Automatic Data Processing, Inc., Macroeconomic Advisers, LLC.

* All size data included in the ADP National Employment Report is based on size of payroll. In some cases, small and medium-size payrolls belong to businesses employing more workers than indicated by the size grouping.

Monthly Changes of Employment in Construction and Financial Activities



Source: Automatic Data Processing, Inc., Macroeconomic Advisers, LLC

About the *ADP National Employment Report*[®]

The *ADP National Employment Report*[®], sponsored by ADP[®], was developed and is maintained by Macroeconomic Advisers, LLC. It is a measure of employment derived from an anonymous subset of roughly 500,000 U.S. business clients. During the twelve-month period through June 2010, this subset averaged over 340,000 U.S. business clients and over 21 million U.S. employees working in all private industrial sectors. The *ADP Small Business Report*[®] is a monthly estimate of private nonfarm employment among companies in the United States with 1-49 employees and is a subset of the *ADP National Employment Report*. The data for both reports is collected for pay periods that can be interpolated to include the week of the 12th of each month, and processed with statistical methodologies similar to those used by the U.S. Bureau of Labor Statistics to compute employment from its monthly survey of establishments. Due to this processing, this subset is modified to make it indicative of national employment levels; therefore, the resulting employment changes computed for the *ADP National Employment Report* are not representative of changes in ADP's total base of U.S. business clients.

For a description of the underlying data and the statistical properties of the series, please see “*ADP National Employment Report: Development Methodology*” at <http://ADPEmploymentreport.com/methodology.aspx>.

The May 2011 *ADP National Employment Report* will be released June 1, 2011 at 8:15 AM ET. For a full schedule of future releases, please visit: www.ADPemploymentreport.com.

Media contacts: ADP Public Relations: 973-974-7612

Macroeconomic Advisers: 314-721-4747

Technical information: 314-721-4747

www.ADPemploymentreport.com

The ADP Logo, ADP, ADP National Employment Report, and ADP Small Business Report are registered trademarks of ADP, Inc.