



Wednesday, February 4, 2009, 8:15 A.M. ET

Nonfarm private employment decreased 522,000 from December 2008 to January 2009 on a seasonally adjusted basis, according to the *ADP National Employment Report*[®]. The estimated change of employment from November to December 2008 was revised up by 34,000, from a decline of 693,000 to a decline of 659,000.

January's *ADP Report* estimates nonfarm private employment in the service-providing sector fell by 279,000. Employment in the goods-producing sector declined 243,000, the twenty-fourth consecutive monthly decline. Employment in the manufacturing sector declined 160,000, its twenty-eighth decline over the last twenty-nine months.

Large businesses, defined as those with 500 or more workers, saw employment decline 92,000, while medium-size businesses with between 50 and 499 workers declined 255,000. Employment among small-size businesses, defined as those with fewer than 50 workers, declined 175,000. Sharply falling employment at medium- and small-size businesses clearly indicates that the recession continues to spread well beyond manufacturing and housing-related activities.

In January, construction employment dropped 83,000. This was its twenty-second consecutive monthly decline, and brings the total decline in construction jobs since the peak in January 2007 to 923,000.

For information on the construction and use of the *ADP Report*, please visit the methodology section of the *ADP National Employment Report* website at <http://ADPEmploymentreport.com/methodology.aspx>.

DERIVED FROM ADP PAYROLL DATA

Table 1. Employees on nonfarm private payrolls by selected industry sector and size
(In thousands)

Industry / Size of Payroll	Seasonally Adjusted						Change from: Dec. 2008 - Jan. 2009p
	Aug. 2008	Sep. 2008	Oct. 2008	Nov. 2008	Dec. 2008p	Jan. 2009p	
Total nonfarm private	114,881	114,657	114,329	113,883	113,224	112,702	-522
Small (1-49).....	50,673	50,592	50,471	50,294	50,033	49,858	-175
Medium (50-499).....	45,087	44,982	44,832	44,634	44,324	44,069	-255
Large (> 499).....	19,121	19,083	19,026	18,955	18,867	18,775	-92
Goods-producing	21,374	21,279	21,145	20,968	20,724	20,481	-243
Small (1-49).....	7,759	7,727	7,678	7,615	7,530	7,456	-74
Medium (50-499).....	9,458	9,413	9,351	9,268	9,147	9,027	-120
Large (> 499).....	4,157	4,139	4,116	4,085	4,047	3,998	-49
Service-providing	93,507	93,378	93,184	92,915	92,500	92,221	-279
Small (1-49).....	42,914	42,865	42,793	42,679	42,503	42,402	-101
Medium (50-499).....	35,629	35,569	35,481	35,366	35,177	35,042	-135
Large (> 499).....	14,964	14,944	14,910	14,870	14,820	14,777	-43
Addendum:							
Manufacturing.....	13,405	13,352	13,275	13,167	13,033	12,873	-160

p = preliminary

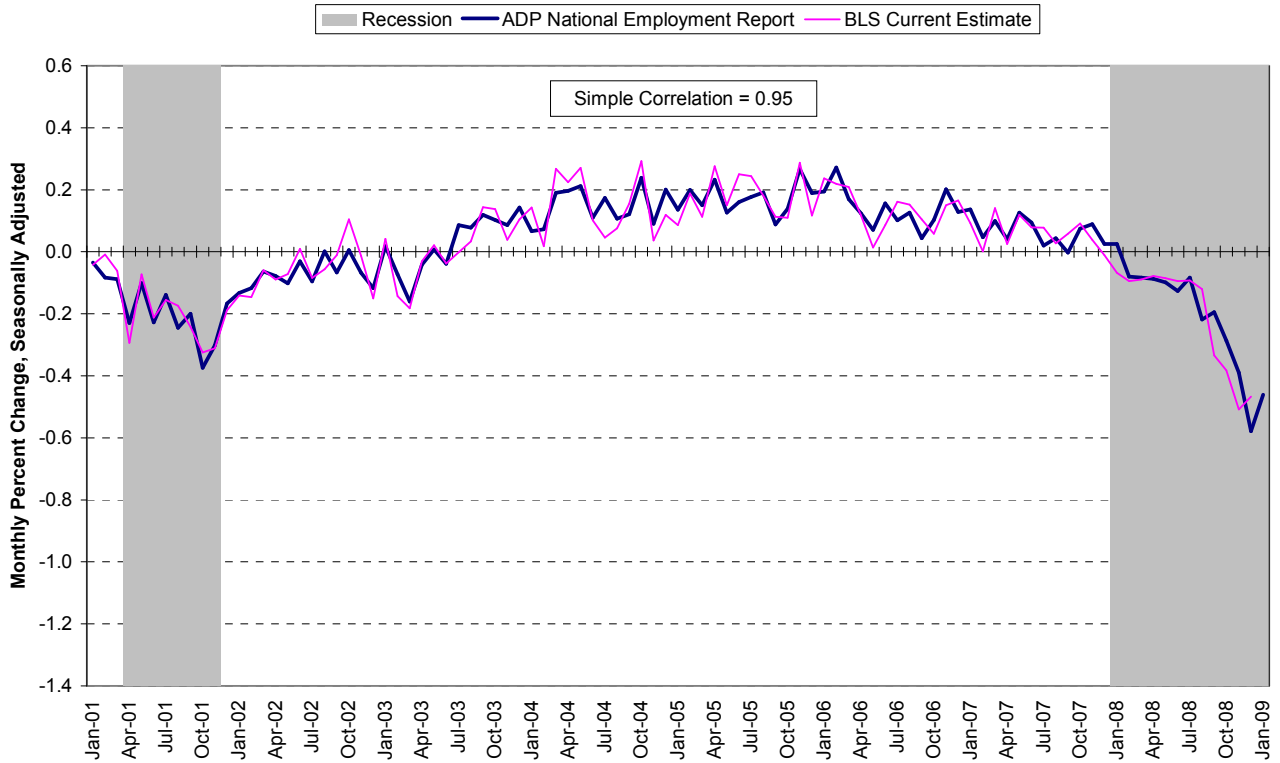
The matched sample used to develop the *ADP National Employment Report* was derived from ADP data which, during the last six months of 2008, averaged approximately 400,000 payrolls representing nearly 24 million U.S. employees. This approximately represents the size of the matched sample used this month.

Notice of Intent to Make Annual Revisions to the *ADP National Employment Report*[®]

On March 4, 2009, Automatic Data Processing, Inc., in conjunction with Macroeconomic Advisers, LLC, will publish annual revisions of the estimates of employment shown in the *ADP National Employment Report*. These revisions will reflect:

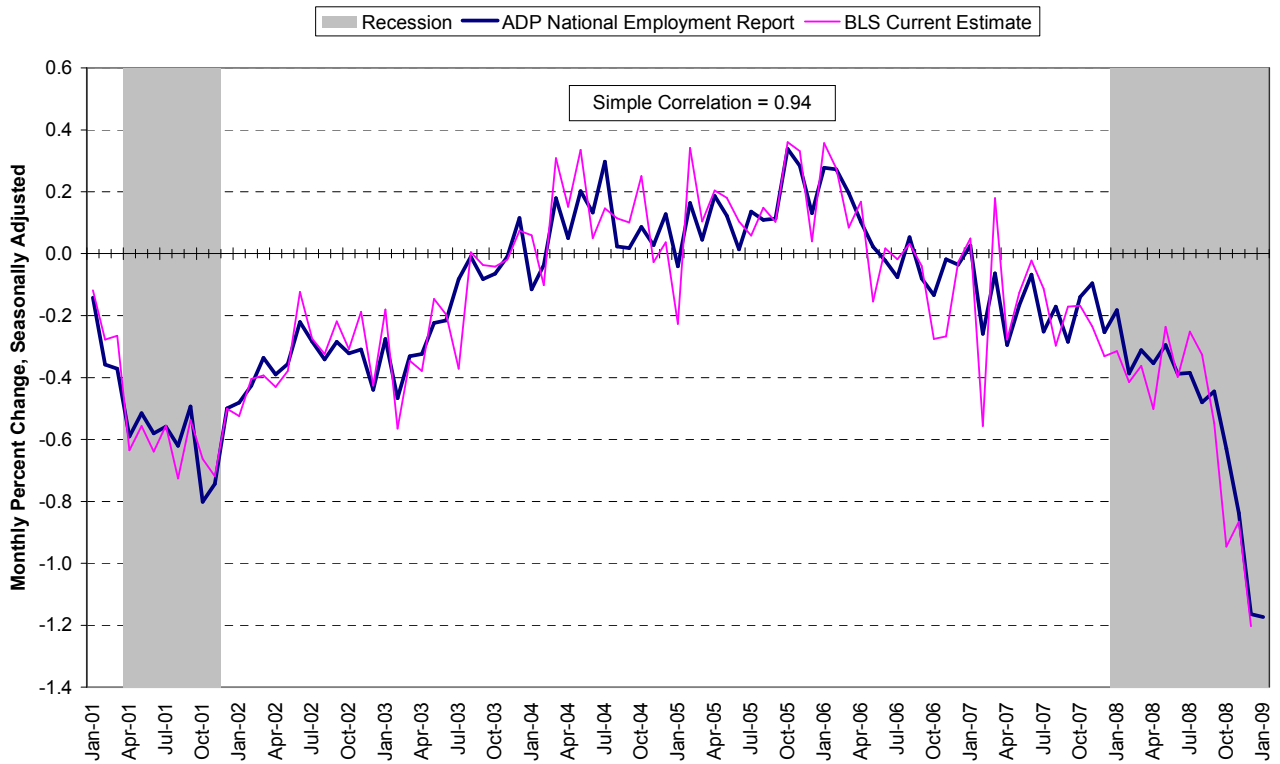
- Updated regression estimates used to adjust for historical differences in the variances of the monthly growth rates of employment reported by the Bureau of Labor Statistics and computed from ADP data.
- Updated estimates of the differences in the historical averages of the growth rates of employment reported by the Bureau of Labor Statistics and computed from ADP data.
- Updated estimates of historical seasonal factors.
- The reference month for establishing the levels of employment shown in the *ADP National Employment Report* will be advanced from March 2007 to March 2008.
- There are no revisions to the methodology of computing the estimates of employment shown in the *ADP National Employment Report*.

Chart 1. Growth of Nonfarm Private Employment, All Industries



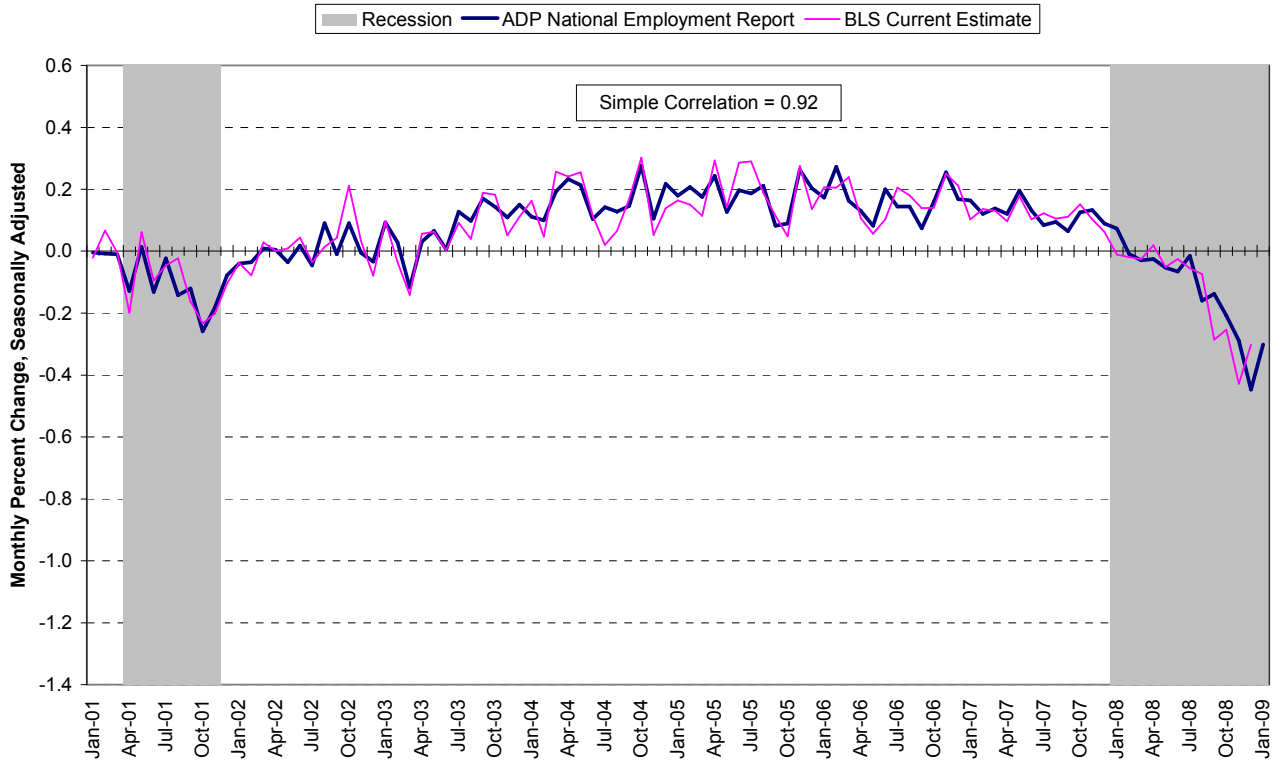
Source: Automatic Data Processing, Inc., Macroeconomic Advisers, LLC., Bureau of Labor Statistics

Chart 2. Growth of Nonfarm Private Employment, Goods-Producing Industries



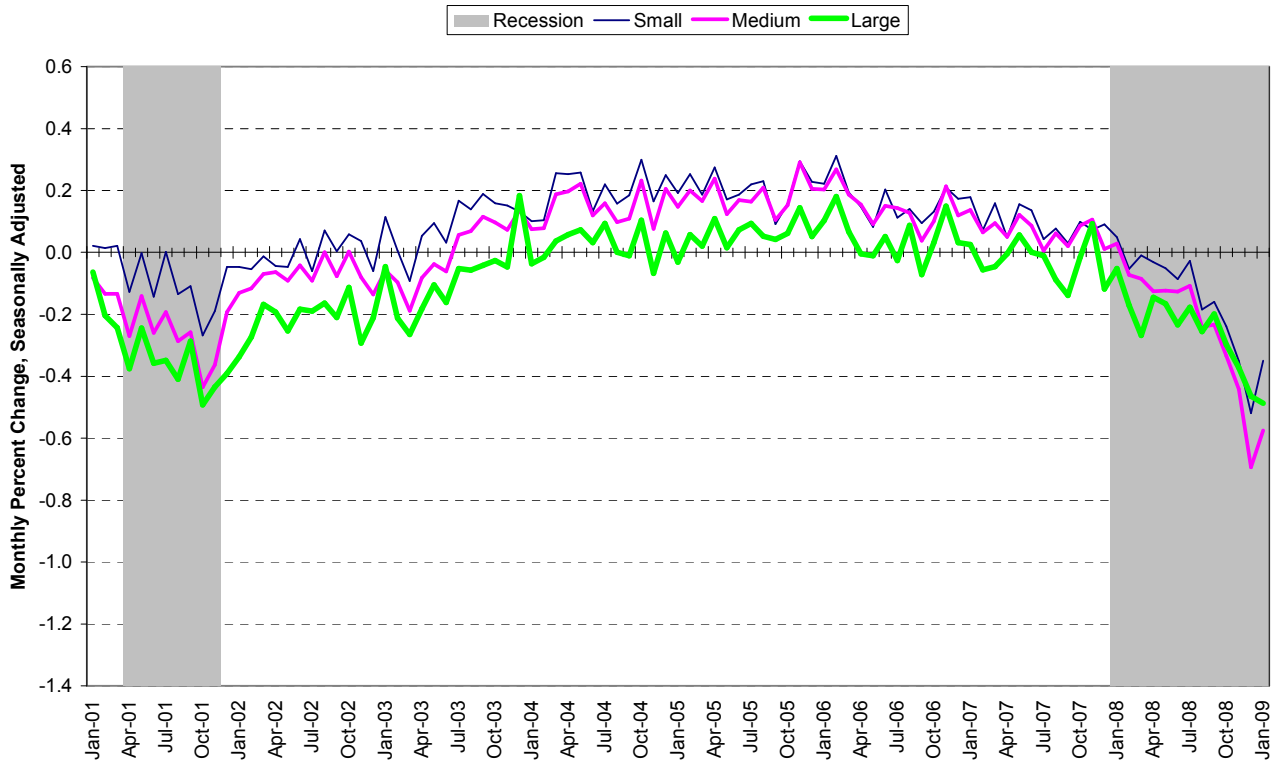
Source: Automatic Data Processing, Inc., Macroeconomic Advisers, LLC., Bureau of Labor Statistics

Chart 3. Growth of Nonfarm Private Employment, Service-Providing Industries



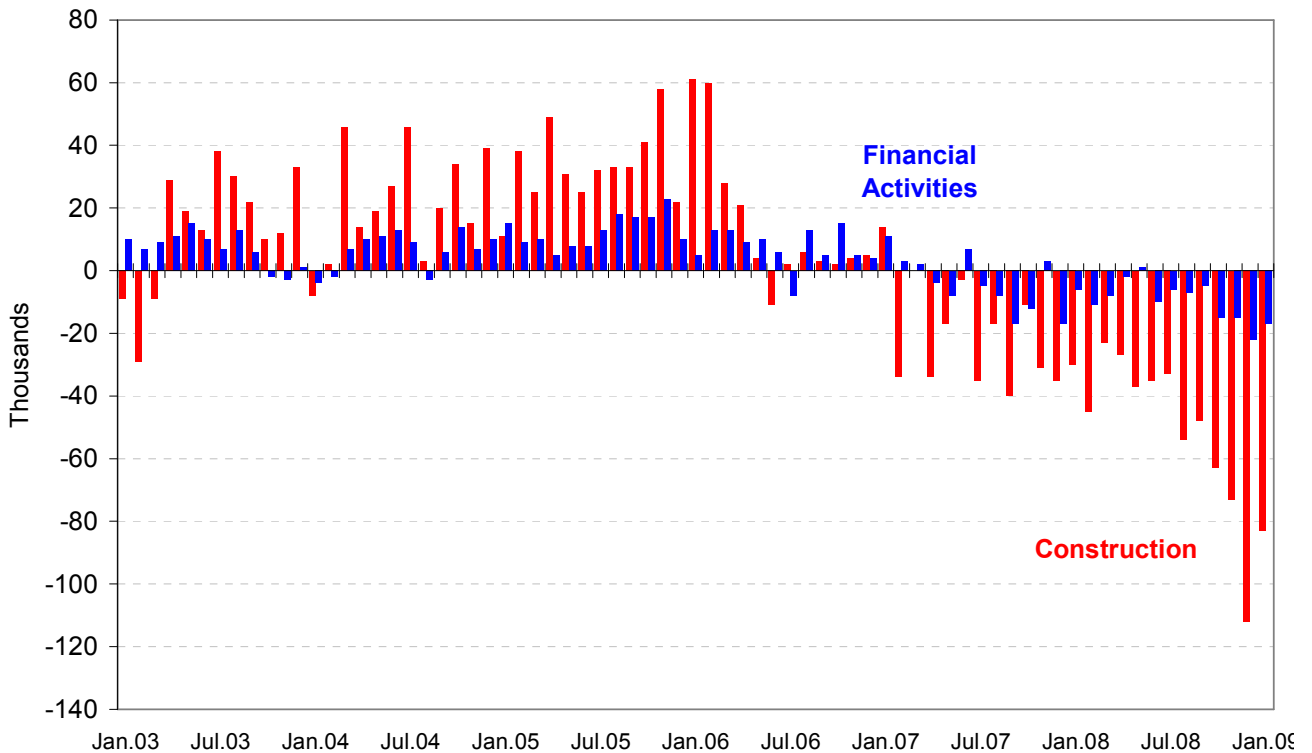
Source: Automatic Data Processing, Inc., Macroeconomic Advisers, LLC., Bureau of Labor Statistics

Chart 4. Growth of Nonfarm Private Employment, by Size of Payroll



Source: Automatic Data Processing, Inc., Macroeconomic Advisers, LLC.

Chart 5. Monthly Changes of Employment in Construction and Financial Activities



Source: Automatic Data Processing, Inc., Macroeconomic Advisers, LLC

About the *ADP National Employment Report*[®]

The *ADP National Employment Report*, sponsored by ADP[®], was developed and is maintained by Macroeconomic Advisers, LLC. It is a measure of employment derived from an anonymous subset of roughly 500,000 U.S. business clients. During the last six months of 2008, this subset represented approximately 400,000 U.S. business clients representing nearly 24 million U.S. employees working in all private industrial sectors. The data is collected for pay periods that can be interpolated to include the week of the 12th of each month, and processed with statistical methodologies similar to those used by the U.S. Bureau of Labor Statistics to compute employment from its monthly survey of establishments. Due to this processing, this subset is modified to make it indicative of national employment levels; therefore, the resulting employment changes computed for the *ADP National Employment Report* are not representative of changes in ADP's total base of U.S. business clients.

For a description of the underlying data and the statistical properties of the series, please see "*ADP National Employment Report: Development Methodology*" at <http://ADPEmploymentreport.com/methodology.aspx>.

For a full schedule of future releases, please visit: www.ADPEmploymentreport.com

Media contacts: ADP Public Relations: 973-974-7612
Macroeconomic Advisers: 314-721-4747

Technical information: 314-721-4747
www.ADPemploymentreport.com

The ADP National Employment Report is a registered trademark of ADP of North America, Inc.