



Wednesday, June 3, 2009, 8:15 A.M. ET

Nonfarm private employment decreased 532,000 from April to May 2009 on a seasonally adjusted basis, according to the *ADP National Employment Report*[®]. The estimated change of employment from March to April was revised by 54,000, from a decline of 491,000 to a decline of 545,000.

Monthly employment losses in April and May averaged 539,000. This is a notable improvement over the first three months of the year, when monthly losses averaged 691,000. Nevertheless, despite some recent indications that economic activity is stabilizing, employment, which usually trails overall economic activity, is likely to decline for at least several more months, although perhaps not as rapidly as during the last six months.

May's *ADP Report* estimates nonfarm private employment in the service-providing sector fell by 265,000. Employment in the goods-producing sector declined 267,000, with employment in the manufacturing sector dropping 149,000, its thirty-ninth consecutive monthly decline.

Large businesses, defined as those with 500 or more workers, saw employment decline by 100,000, while medium-size businesses with between 50 and 499 workers declined 223,000. Employment among small-size businesses, defined as those with fewer than 50 workers, declined 209,000. Since reaching peak employment in January 2008, small-size businesses have shed 2,125,000 jobs.

In May, construction employment dropped 108,000. This was its twenty-eighth consecutive monthly decline, and brings the total decline in construction jobs since the peak in January 2007 to 1,345,000. Employment in the financial services sector dropped 32,000, the eighteenth consecutive monthly decline.

For information on the construction and use of the *ADP Report*, please visit the methodology section of the *ADP National Employment Report* website at <http://ADPEmploymentreport.com/methodology.aspx>.

DERIVED FROM ADP PAYROLL DATA

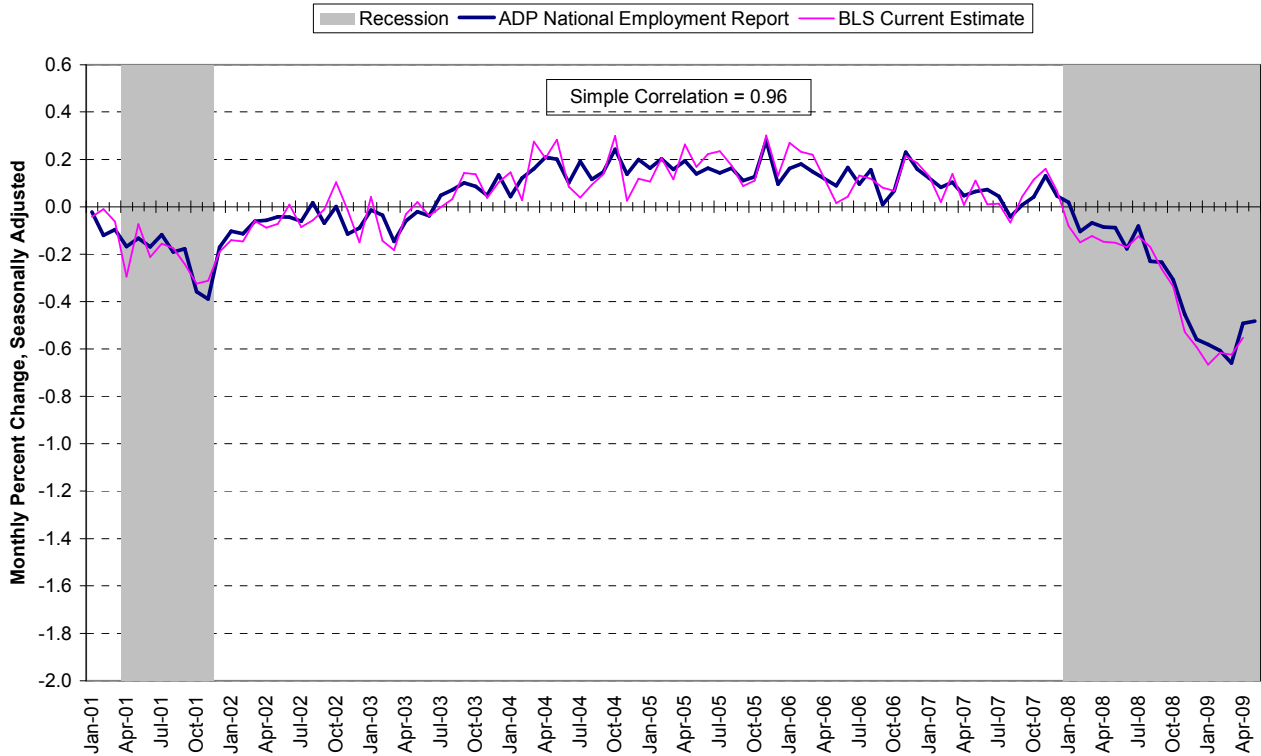
Table 1. Employees on nonfarm private payrolls by selected industry sector and size
(In thousands)

Industry / Size of Payroll	Seasonally Adjusted						Change from: Apr. 2009 - May. 2009p
	Dec. 2008	Jan. 2009	Feb. 2009	Mar. 2009	Apr. 2009p	May. 2009p	
Total nonfarm private	112,838	112,183	111,502	110,766	110,221	109,689	-532
Small (1-49).....	49,808	49,576	49,317	49,029	48,823	48,614	-209
Medium (50-499).....	44,267	43,967	43,666	43,342	43,092	42,869	-223
Large (> 499).....	18,763	18,640	18,519	18,395	18,306	18,206	-100
Goods-producing	20,562	20,272	19,937	19,609	19,341	19,074	-267
Small (1-49).....	7,436	7,347	7,230	7,114	7,019	6,921	-98
Medium (50-499).....	9,071	8,927	8,776	8,625	8,499	8,385	-114
Large (> 499).....	4,055	3,998	3,931	3,870	3,823	3,768	-55
Service-providing	92,276	91,911	91,565	91,157	90,880	90,615	-265
Small (1-49).....	42,372	42,229	42,087	41,915	41,804	41,693	-111
Medium (50-499).....	35,196	35,040	34,890	34,717	34,593	34,484	-109
Large (> 499).....	14,708	14,642	14,588	14,525	14,483	14,438	-45
Addendum:							
Manufacturing.....	12,878	12,686	12,473	12,278	12,121	11,972	-149

p = preliminary

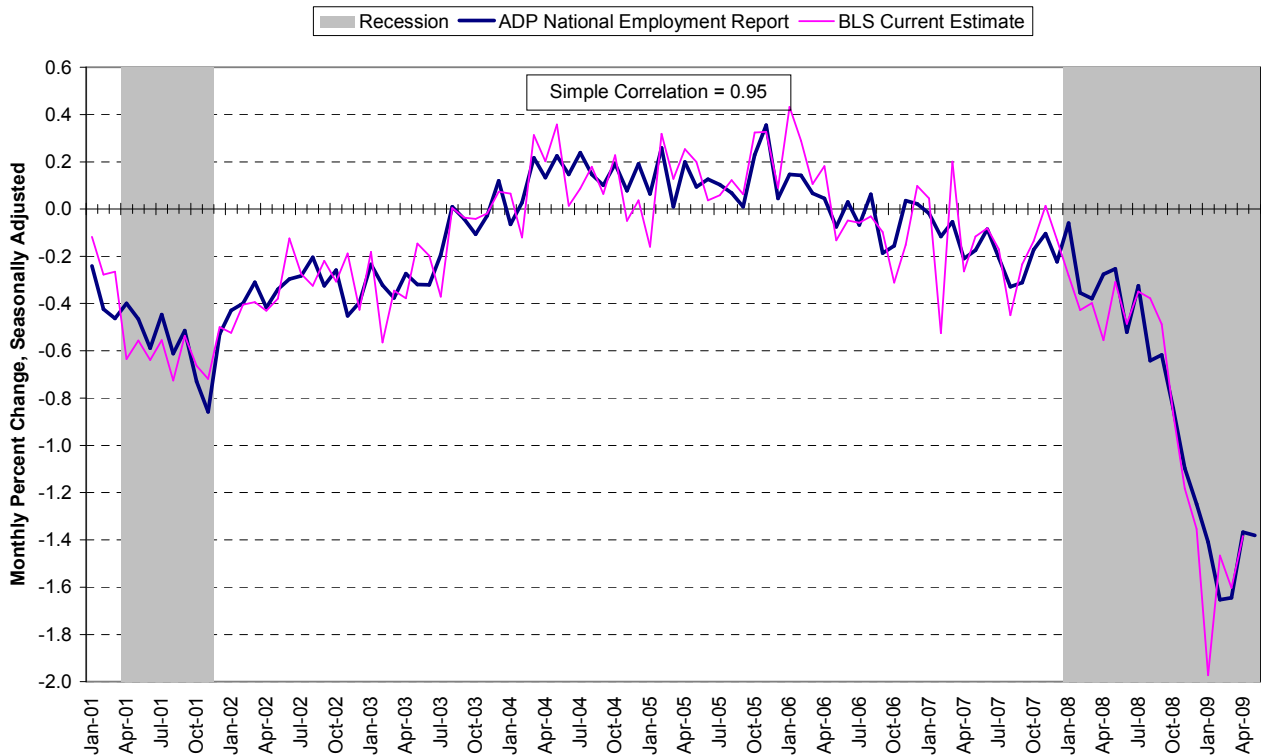
The matched sample used to develop the *ADP National Employment Report* was derived from ADP data which, during the last six months of 2008, averaged approximately 400,000 payrolls representing nearly 24 million U.S. employees. This approximately represents the size of the matched sample used this month.

Chart 1. Growth of Nonfarm Private Employment, All Industries



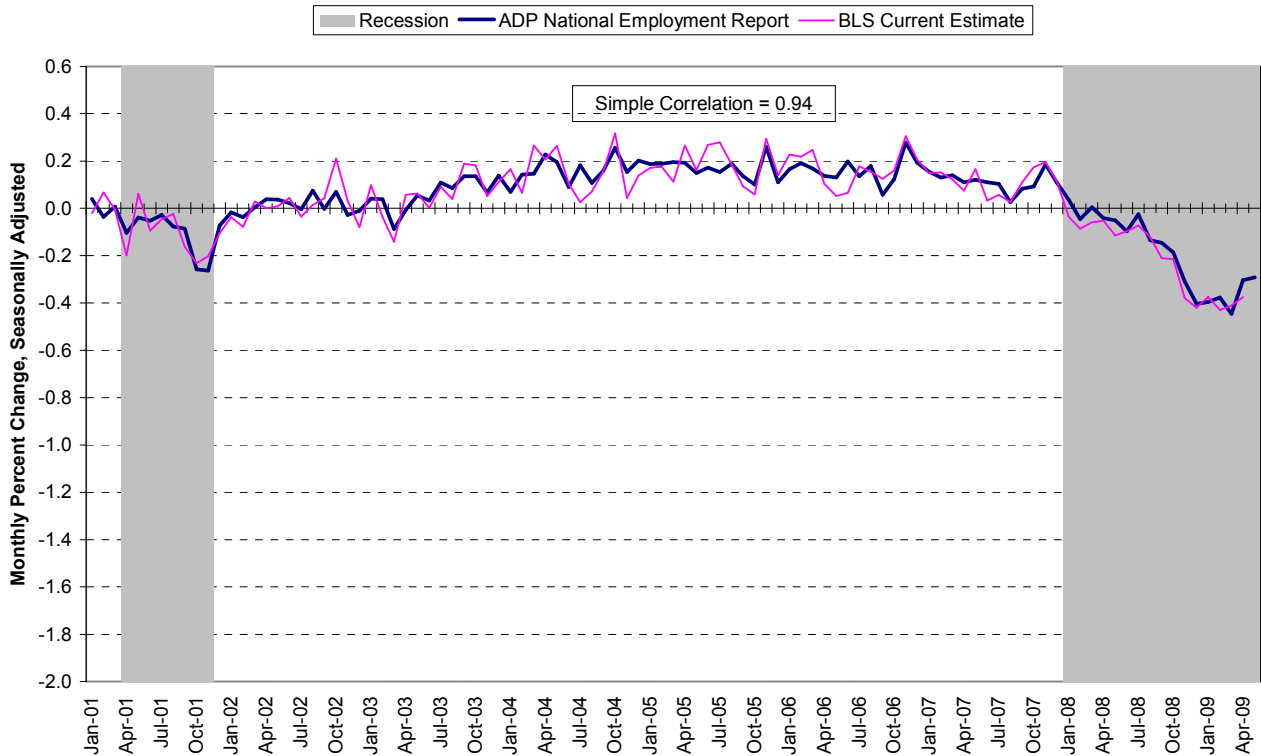
Source: Automatic Data Processing, Inc., Macroeconomic Advisers, LLC., Bureau of Labor Statistics

Chart 2. Growth of Nonfarm Private Employment, Goods-Producing Industries



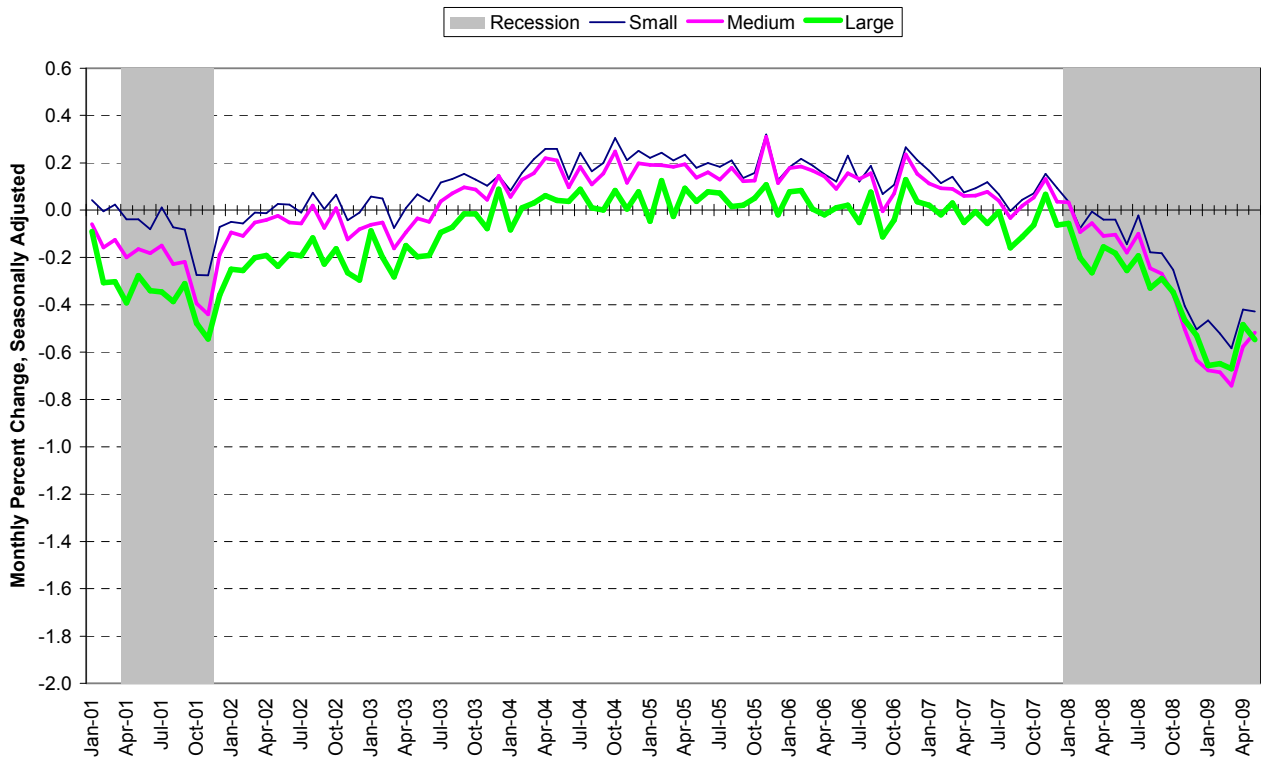
Source: Automatic Data Processing, Inc., Macroeconomic Advisers, LLC., Bureau of Labor Statistics

Chart 3. Growth of Nonfarm Private Employment, Service-Providing Industries



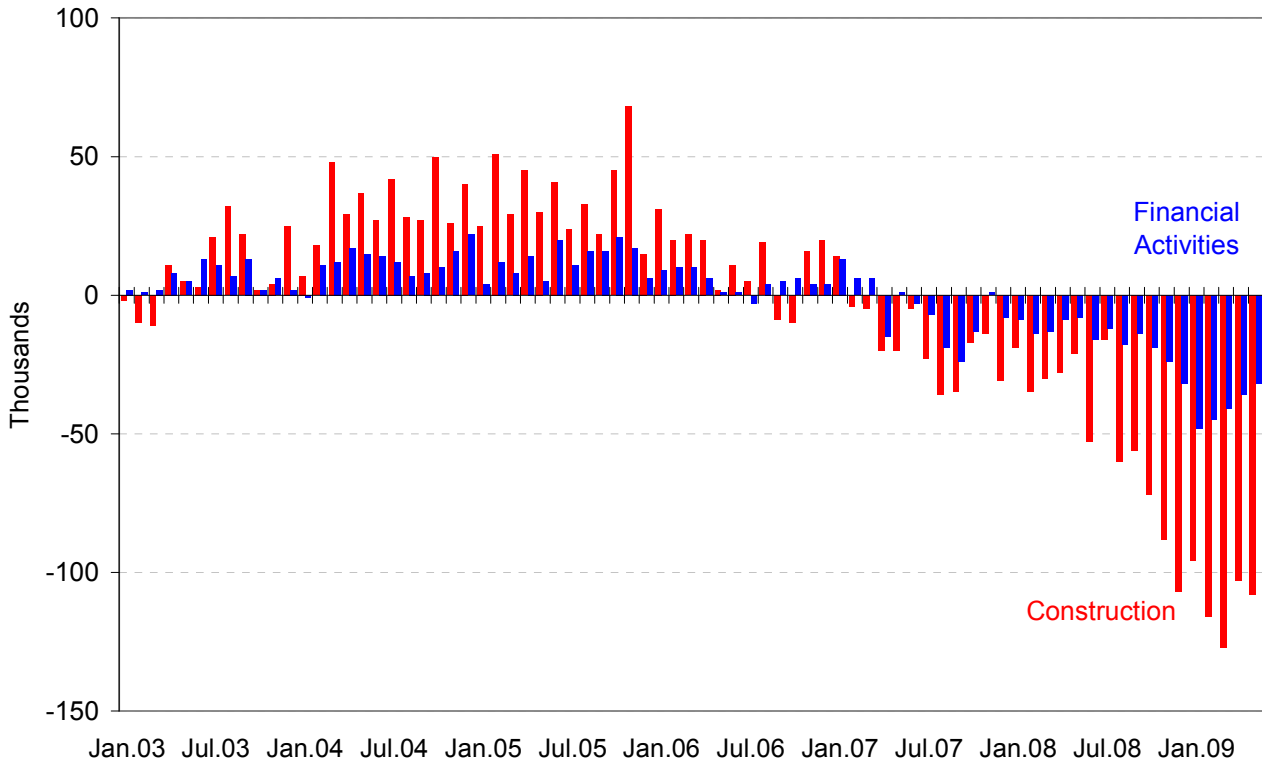
Source: Automatic Data Processing, Inc., Macroeconomic Advisers, LLC., Bureau of Labor Statistics

Chart 4. Growth of Nonfarm Private Employment, by Size of Payroll



Source: Automatic Data Processing, Inc., Macroeconomic Advisers, LLC.

Chart 5. Monthly Changes of Employment in Construction and Financial Activities



Source: Automatic Data Processing, Inc., Macroeconomic Advisers, LLC

About the *ADP National Employment Report*[®]

The *ADP National Employment Report*, sponsored by ADP[®], was developed and is maintained by Macroeconomic Advisers, LLC. It is a measure of employment derived from an anonymous subset of roughly 500,000 U.S. business clients. During the last six months of 2008, this subset represented approximately 400,000 U.S. business clients representing nearly 24 million U.S. employees working in all private industrial sectors. The data is collected for pay periods that can be interpolated to include the week of the 12th of each month, and processed with statistical methodologies similar to those used by the U.S. Bureau of Labor Statistics to compute employment from its monthly survey of establishments. Due to this processing, this subset is modified to make it indicative of national employment levels; therefore, the resulting employment changes computed for the *ADP National Employment Report* are not representative of changes in ADP’s total base of U.S. business clients.

For a description of the underlying data and the statistical properties of the series, please see “*ADP National Employment Report: Development Methodology*” at <http://ADPEmploymentreport.com/methodology.aspx>.

For a full schedule of future releases, please visit: www.ADPEmploymentreport.com

Media contacts: ADP Public Relations: 973-974-7612
Macroeconomic Advisers: 314-721-4747

Technical information: 314-721-4747
www.ADPemploymentreport.com

The ADP National Employment Report is a registered trademark of ADP of North America, Inc.