



Wednesday, September 30, 2009, 8:15 A.M. ET

Nonfarm private employment decreased 254,000 from August to September 2009 on a seasonally adjusted basis, according to the *ADP National Employment Report*[®]. The estimated change of employment from July to August was revised by 21,000, from a decline of 298,000 to a decline of 277,000.

September's employment decline was the smallest since July of 2008 and employment losses have diminished significantly over the last two quarters. Nevertheless, employment, which usually trails overall economic activity, is likely to decline for at least several more months, with losses continuing to diminish.

September's *ADP Report* estimates nonfarm private employment in the service-providing sector fell by 103,000. Employment in the goods-producing sector declined 151,000, with employment in the manufacturing sector dropping 74,000, about the same as last month.

Large businesses, defined as those with 500 or more workers, saw employment decline by 61,000, while medium-size businesses with between 50 and 499 workers declined 93,000. Employment among small-size businesses, defined as those with fewer than 50 workers, declined 100,000. Employment losses among small-size businesses have diminished in each of the last six months.

In September, construction employment dropped 73,000. This was its thirty-second consecutive monthly decline, and brings the total decline in construction jobs since the peak in January 2007 to 1,632,000. Employment in the financial services sector dropped 19,000, the twenty-second consecutive monthly decline.

For information on the construction and use of the *ADP Report*, please visit the methodology section of the *ADP National Employment Report* website at <http://ADPEmploymentreport.com/methodology.aspx>.

DERIVED FROM ADP PAYROLL DATA

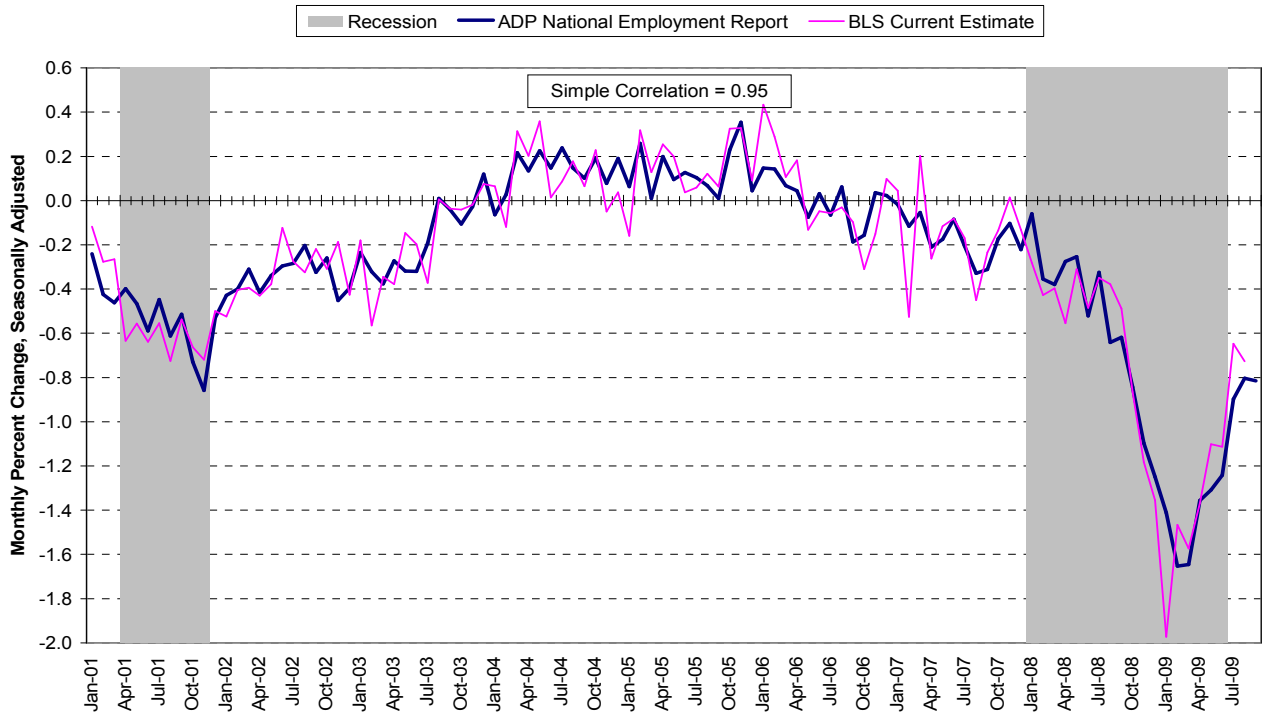
Table 1. Employees on nonfarm private payrolls by selected industry sector and size
(In thousands)

Industry / Size of Payroll	Seasonally Adjusted						Change from: Aug.2009 - Sep.2009p
	Apr. 2009	May 2009	Jun. 2009	Jul. 2009	Aug. 2009p	Sep. 2009p	
Total nonfarm private	110,248	109,787	109,354	109,007	108,730	108,476	-254
Small (1-49).....	48,836	48,664	48,504	48,373	48,259	48,159	-100
Medium (50-499).....	43,104	42,906	42,720	42,574	42,468	42,375	-93
Large (> 499).....	18,308	18,217	18,130	18,060	18,003	17,942	-61
Goods-producing	19,343	19,090	18,853	18,684	18,534	18,383	-151
Small (1-49).....	7,020	6,931	6,846	6,786	6,724	6,662	-62
Medium (50-499).....	8,500	8,390	8,288	8,217	8,160	8,105	-55
Large (> 499).....	3,823	3,769	3,719	3,681	3,650	3,616	-34
Service-providing	90,905	90,697	90,501	90,323	90,196	90,093	-103
Small (1-49).....	41,816	41,733	41,658	41,587	41,535	41,497	-38
Medium (50-499).....	34,604	34,516	34,432	34,357	34,308	34,270	-38
Large (> 499).....	14,485	14,448	14,411	14,379	14,353	14,326	-27
Addendum:							
Manufacturing.....	12,119	11,970	11,836	11,740	11,668	11,594	-74

p = preliminary

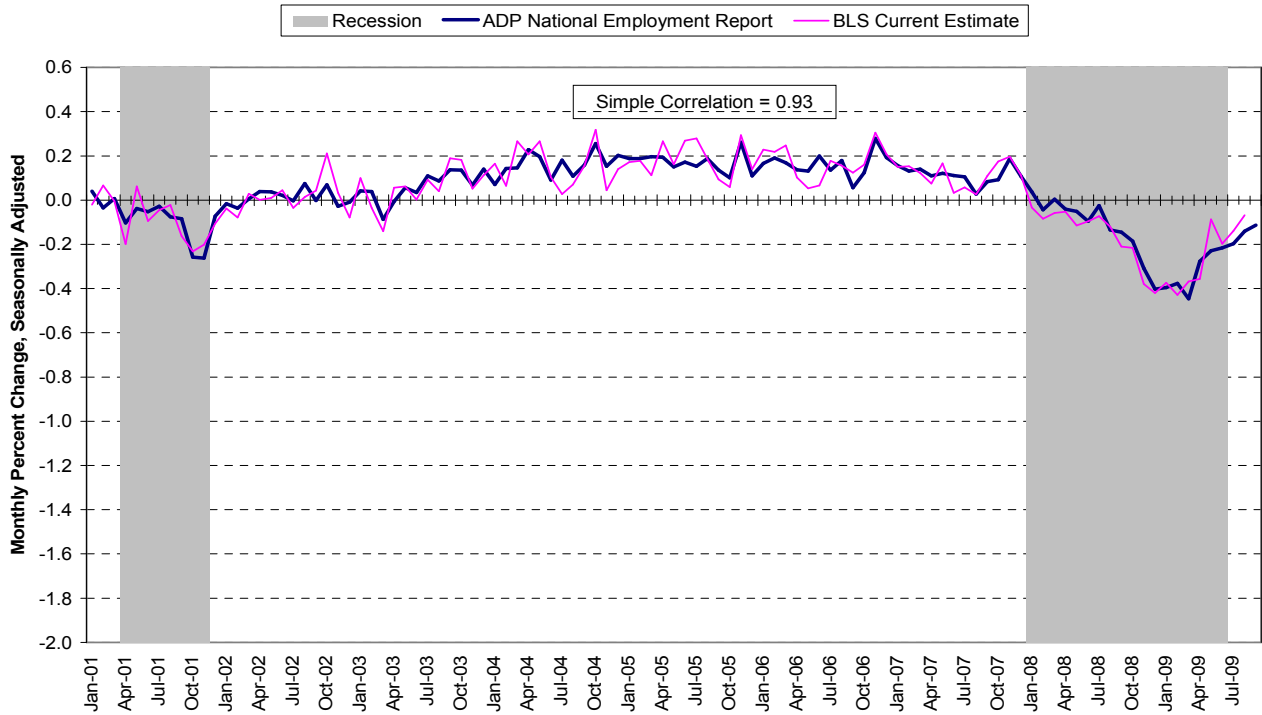
The matched sample used to develop the *ADP National Employment Report* was derived from ADP data, which during the twelve month period through June 2009, averaged approximately 400,000 U.S. business clients and represented over 23 million U.S. employees. This approximately represents the size of the matched sample used this month.

Chart 2. Growth of Private Nonfarm Employment, Goods-Producing Industries



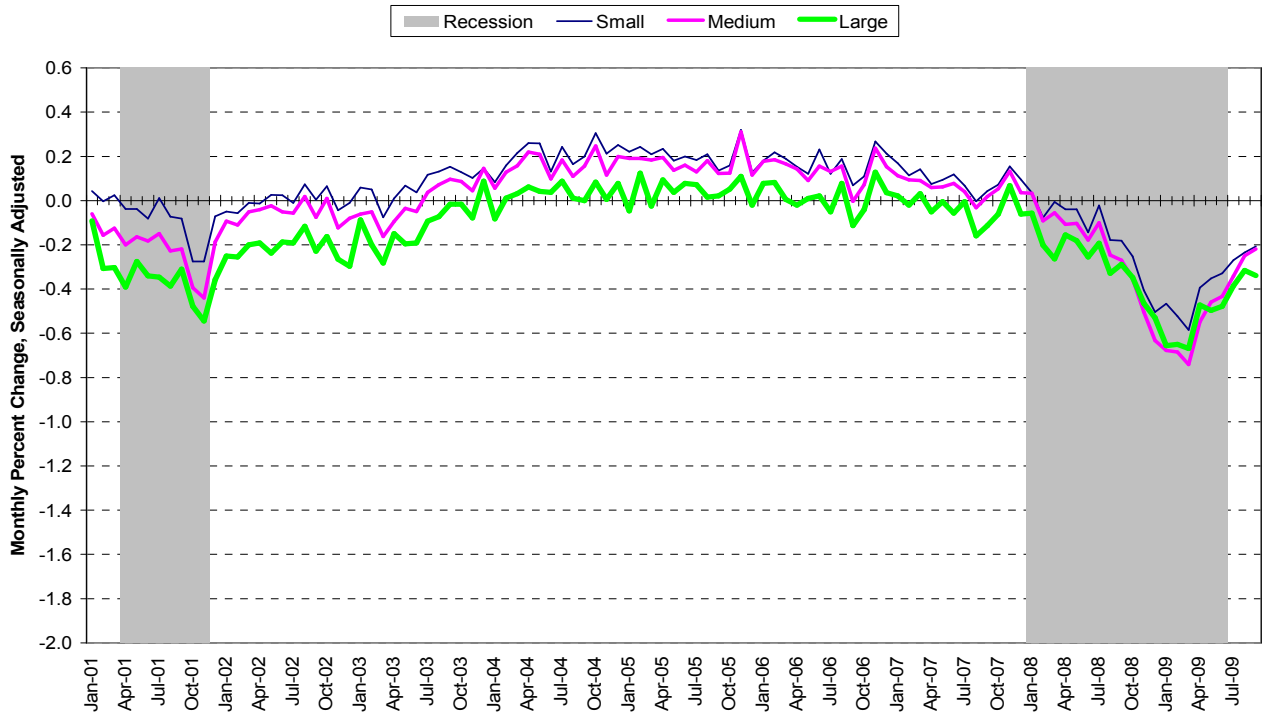
Source: Automatic Data Processing, Inc., Macroeconomic Advisers, LLC., Bureau of Labor Statistics

Chart 3. Growth of Private Nonfarm Employment, Service-Providing Industries



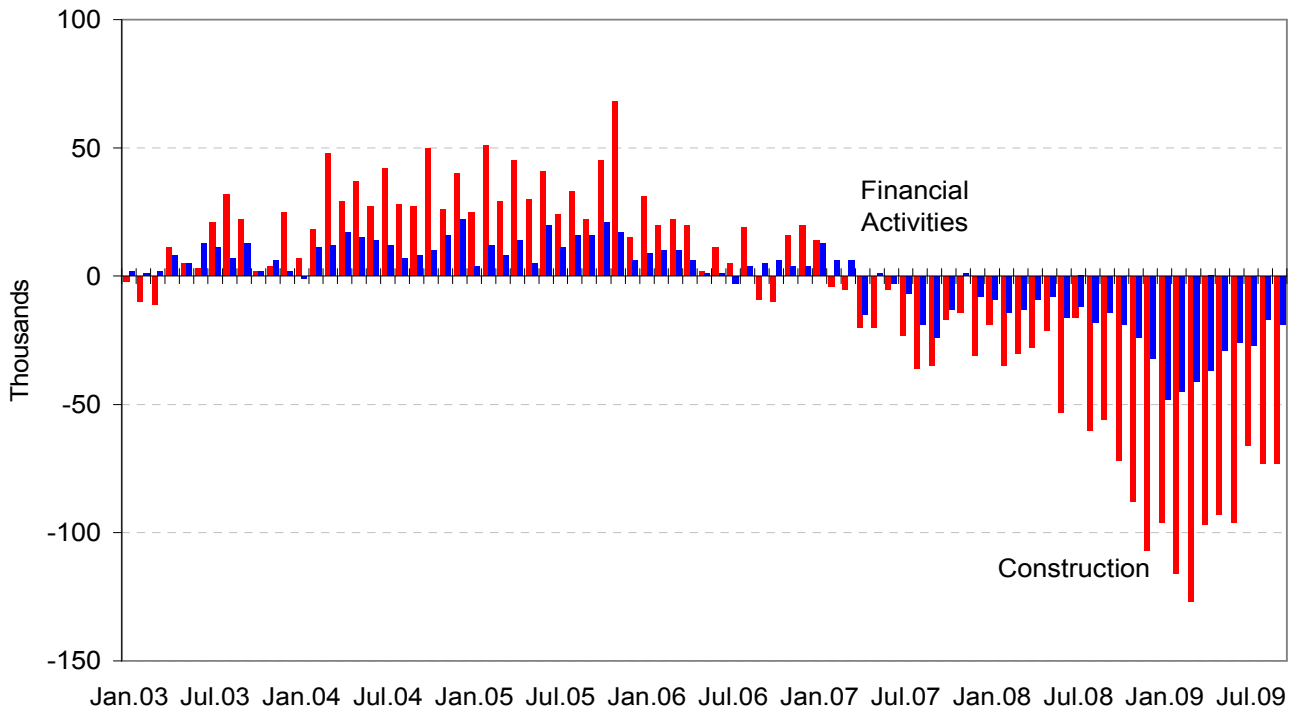
Source: Automatic Data Processing, Inc., Macroeconomic Advisers, LLC., Bureau of Labor Statistics

Chart 4. Growth of Private Nonfarm Employment, by Size of Payroll



Source: Automatic Data Processing, Inc., Macroeconomic Advisers, LLC.

Monthly Changes of Employment in Construction and Financial Activities



Source: Automatic Data Processing, Inc., Macroeconomic Advisers, LLC

About the *ADP National Employment Report*[®]

The *ADP National Employment Report*, sponsored by ADP[®], was developed and is maintained by Macroeconomic Advisers, LLC. It is a measure of employment derived from an anonymous subset of roughly 500,000 U.S. business clients. During the twelve month period through June 2009, this subset averaged approximately 400,000 U.S. business clients and over 23 million U.S. employees working in all private industrial sectors. The data is collected for pay periods that can be interpolated to include the week of the 12th of each month, and processed with statistical methodologies similar to those used by the U.S. Bureau of Labor Statistics to compute employment from its monthly survey of establishments. Due to this processing, this subset is modified to make it indicative of national employment levels; therefore, the resulting employment changes computed for the *ADP National Employment Report* are not representative of changes in ADP's total base of U.S. business clients.

For a description of the underlying data and the statistical properties of the series, please see “*ADP National Employment Report: Development Methodology*” at <http://ADPEmploymentreport.com/methodology.aspx>.

For a full schedule of future releases, please visit: www.ADPEmploymentreport.com

Media contacts: ADP Public Relations: 973-974-7612

Macroeconomic Advisers: 314-721-4747

Technical information: 314-721-4747

www.ADPEmploymentreport.com

The ADP National Employment Report is a registered trademark of ADP of North America, Inc.