



Published on Wednesday, October 5, 2011, 8:15 A.M. ET

## September 2011 ADP National Employment Report®

Employment in the U.S. nonfarm private business sector increased by 91,000 from August to September on a seasonally adjusted basis, according to the latest [ADP National Employment Report](#)® released today. The estimated advance in employment from July to August was revised down only slightly to 89,000 from the initially reported 91,000.

Today's *ADP National Employment Report* suggests that the recent trend in private employment remains moderate, and probably is below a pace consistent with a stable unemployment rate. Moderate growth in employment is consistent with the recent deceleration of GDP.

Employment in the private, service-providing sector rose 90,000 in September, up slightly from an increase of 83,000 in August, marking 21 consecutive months of employment gains. Employment in the private, goods-producing sector rose a scant 1,000 in September, while manufacturing employment declined by 5,000.

Employment on small payrolls—those with up to 49 workers—rose 60,000 in September, nearly equal to job creation among small businesses last month. Employment on medium payrolls—those with 50 to 499 workers—rose 36,000, and employment on large payrolls—those with 500 or more workers—declined 5,000.\*

Employment in the construction industry fell 2,000 in September, partially reversing a rise of 7,000 in August, bringing the total decrease in construction employment since its peak in January 2007 to 2,130,000. Employment in the financial services sector remained essentially unchanged in September. The total decrease in financial services employment for the same period remains 687,000.

For information on the construction sector and use of the *ADP Report*, please visit the methodology section of the *ADP National Employment Report* website at <http://ADPEmploymentreport.com/methodology.aspx>.

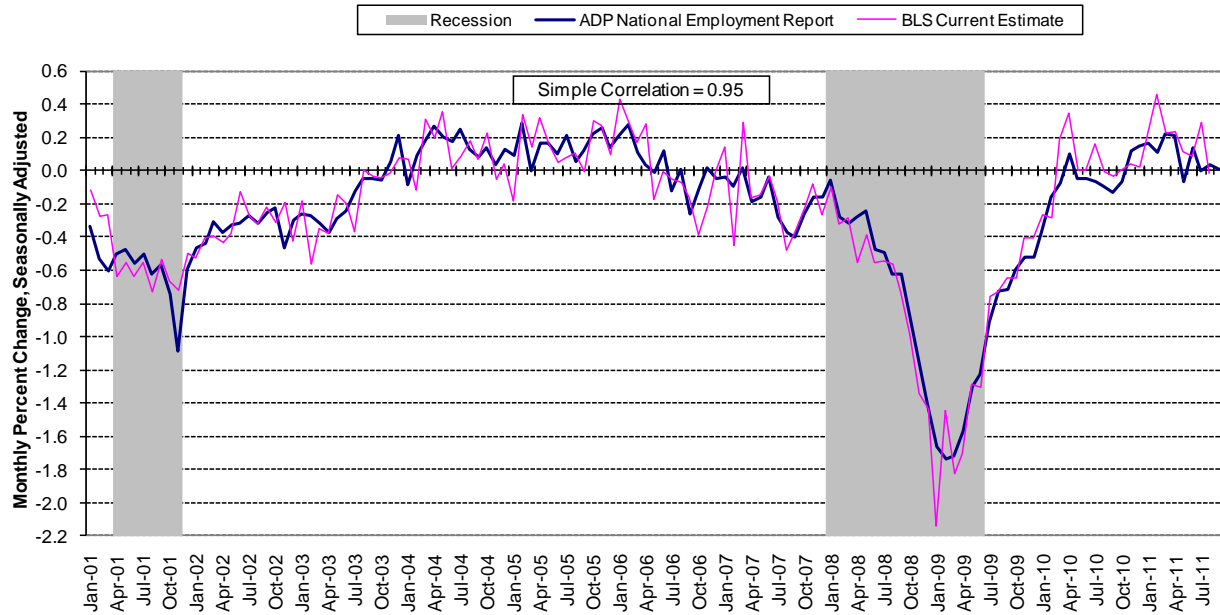
\* All size data included in the *ADP National Employment Report* is based on size of payroll. In some cases, small and medium-size payrolls belong to businesses employing more workers than indicated by the size grouping.

DERIVED FROM ADP PAYROLL DATA

| <b>Table 1. Employees on nonfarm private payrolls by selected industry sector and size*</b><br>(In thousands)   |                     |          |           |           |            |            |   |
|---|---------------------|----------|-----------|-----------|------------|------------|---|
| Industry / Size of Payroll  | Seasonally Adjusted |          |           |           |            |            | Change from:<br>Aug.2011 -<br>Sep.2011p |
|   | Apr. 2011           | May 2011 | Jun. 2011 | Jul. 2011 | Aug. 2011p | Sep. 2011p |   |
| <b>Total nonfarm private</b> .....  | 108,470             | 108,505  | 108,649   | 108,756   | 108,845    | 108,936    | 91                                      |
| Small (1-49).....   | 49,102              | 49,129   | 49,208    | 49,264    | 49,322     | 49,382     | 60                                      |
| Medium (50-499).....  | 41,902              | 41,931   | 41,989    | 42,032    | 42,063     | 42,099     | 36                                      |
| Large (> 499).....  | 17,466              | 17,445   | 17,452    | 17,460    | 17,460     | 17,455     | -5                                      |
| <b>Goods-producing</b> .....  | 17,815              | 17,804   | 17,829    | 17,828    | 17,834     | 17,835     | 1                                       |
| Small (1-49).....   | 6,633               | 6,633    | 6,644     | 6,645     | 6,652      | 6,657      | 5                                       |
| Medium (50-499).....  | 7,750               | 7,757    | 7,767     | 7,766     | 7,769      | 7,773      | 4                                       |
| Large (> 499).....  | 3,432               | 3,414    | 3,418     | 3,417     | 3,413      | 3,405      | -8                                      |
| <b>Service-providing</b> .....  | 90,655              | 90,701   | 90,820    | 90,928    | 91,011     | 91,101     | 90                                      |
| Small (1-49).....   | 42,469              | 42,496   | 42,564    | 42,619    | 42,670     | 42,725     | 55                                      |
| Medium (50-499).....  | 34,152              | 34,174   | 34,222    | 34,266    | 34,294     | 34,326     | 32                                      |
| Large (> 499).....  | 14,034              | 14,031   | 14,034    | 14,043    | 14,047     | 14,050     | 3                                       |
| <b>Addendum:</b>  |                     |          |           |           |            |            |   |
| Manufacturing.....  | 11,662              | 11,652   | 11,674    | 11,675    | 11,668     | 11,663     | -5                                      |
| <p>p = preliminary; subject to revision<br/>                     * All size data included in the ADP National Employment Report is based on size of payroll. In some cases, small and medium-size payrolls belong to businesses employing more workers than indicated by the size grouping.</p> |                     |          |           |           |            |            |   |

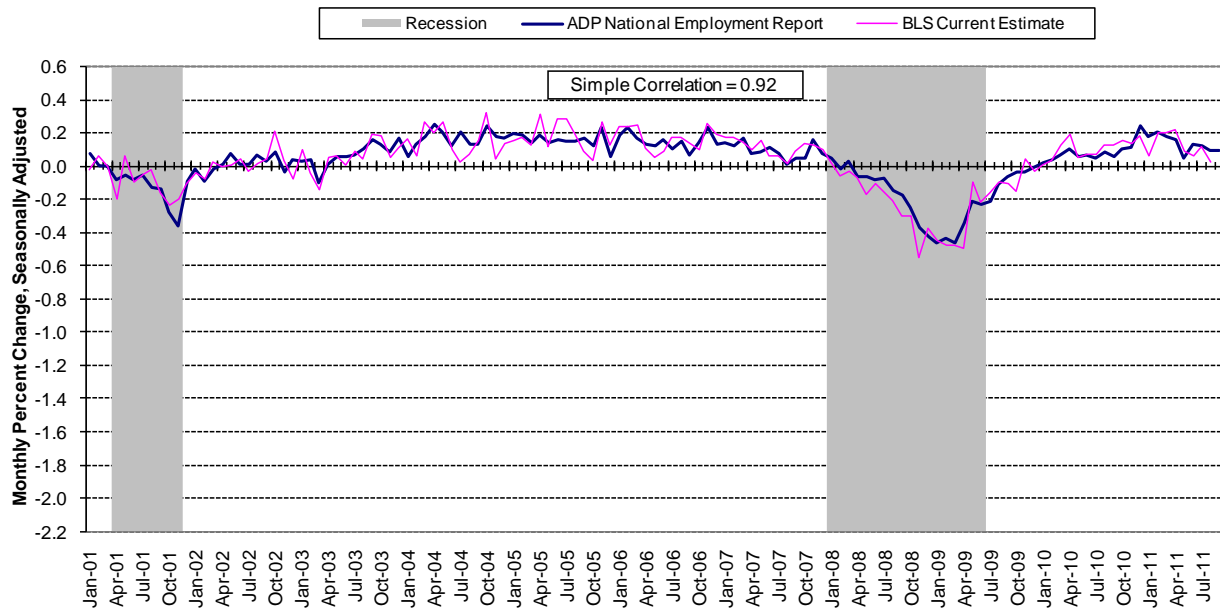
The matched sample used to develop the *ADP National Employment Report* was derived from ADP data, which, during 2010, averaged about 337,000 U.S. business clients and represented over 21 million U.S. employees. This approximately represents the size of the matched sample used this month.

**Chart 1. Growth of Private Nonfarm Employment, Goods-Producing Industries**



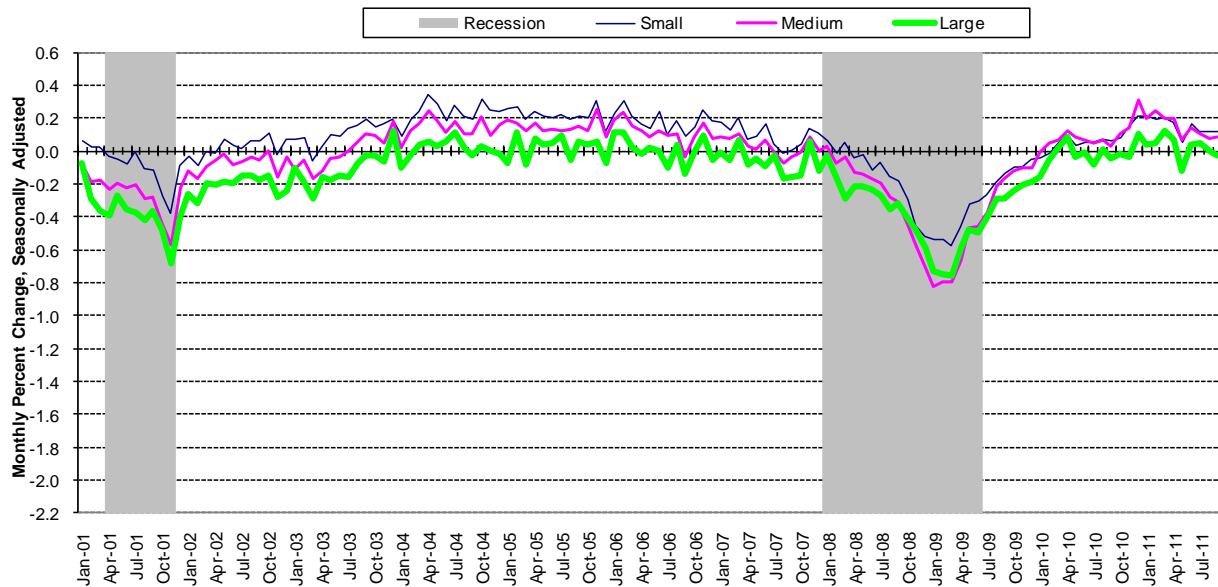
Source: Automatic Data Processing, Inc., Macroeconomic Advisers, LLC., Bureau of Labor Statistics

**Chart 2. Growth of Private Nonfarm Employment, Service-Providing Industries**



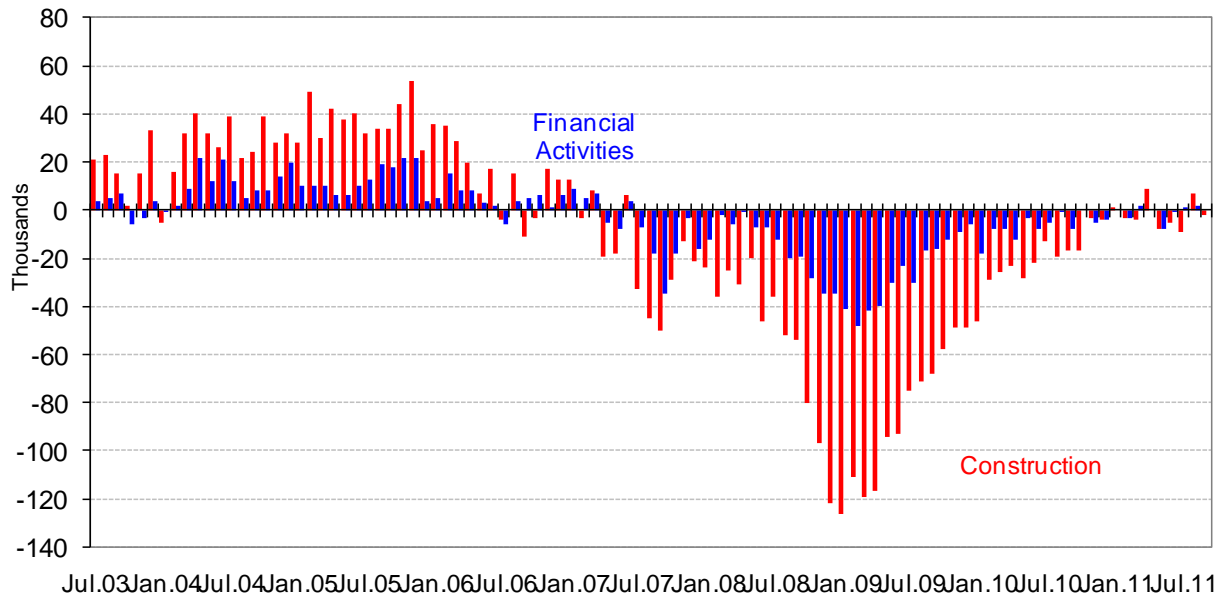
Source: Automatic Data Processing, Inc., Macroeconomic Advisers, LLC., Bureau of Labor Statistics

**Chart 3. Growth of Private Nonfarm Employment, by Size of Payroll\***



\* All size data included in the ADP National Employment Report is based on size of payroll. In some cases, small and medium-size payrolls belong to businesses employing more workers than indicated by the size grouping.  
**Source: Automatic Data Processing, Inc., Macroeconomic Advisers, LLC.**

**Chart 4. Monthly Changes of Employment in Construction and Financial Activities  
 September 2011**



Source: Automatic Data Processing, Inc., Macroeconomic Advisers, LLC

**About the *ADP National Employment Report*<sup>®</sup>**

The *ADP National Employment Report*<sup>®</sup>, sponsored by ADP<sup>®</sup>, was developed and is maintained by Macroeconomic Advisers, LLC. It is a measure of employment derived from an anonymous subset of roughly 500,000 U.S. business clients. During 2010, this subset averaged about 337,000 U.S. business clients and represented over 21 million U.S. employees working in all private industrial sectors. The *ADP Small Business Report*<sup>®</sup> is a monthly estimate of private nonfarm employment among companies in the United States with 1-49 employees and is a subset of the *ADP National Employment Report*. The data for both reports is collected for pay periods that can be interpolated to include the week of the 12th of each month, and processed with statistical methodologies similar to those used by the U.S. Bureau of Labor Statistics to compute employment from its monthly survey of establishments. Due to this processing, this subset is modified to make it indicative of national employment levels; therefore, the resulting employment changes computed for the *ADP National Employment Report* are not representative of changes in ADP's total base of U.S. business clients.

For a description of the underlying data and the statistical properties of the series, please see “*ADP National Employment Report: Development Methodology*” at <http://ADPemploymentreport.com/methodology.aspx>.

The October 2011 *ADP National Employment Report* will be released November 2, 2011, at 8:15 AM ET. For a full schedule of future releases, please visit: [www.ADPemploymentreport.com](http://www.ADPemploymentreport.com).

Media contacts: ADP Public Relations: 973-974-7612  
Macroeconomic Advisers: 314-721-4747

Technical information: 314-721-4747  
[www.ADPemploymentreport.com](http://www.ADPemploymentreport.com)

*The ADP logo, ADP, ADP National Employment Report, and ADP Small Business Report are registered trademarks of ADP, Inc.*